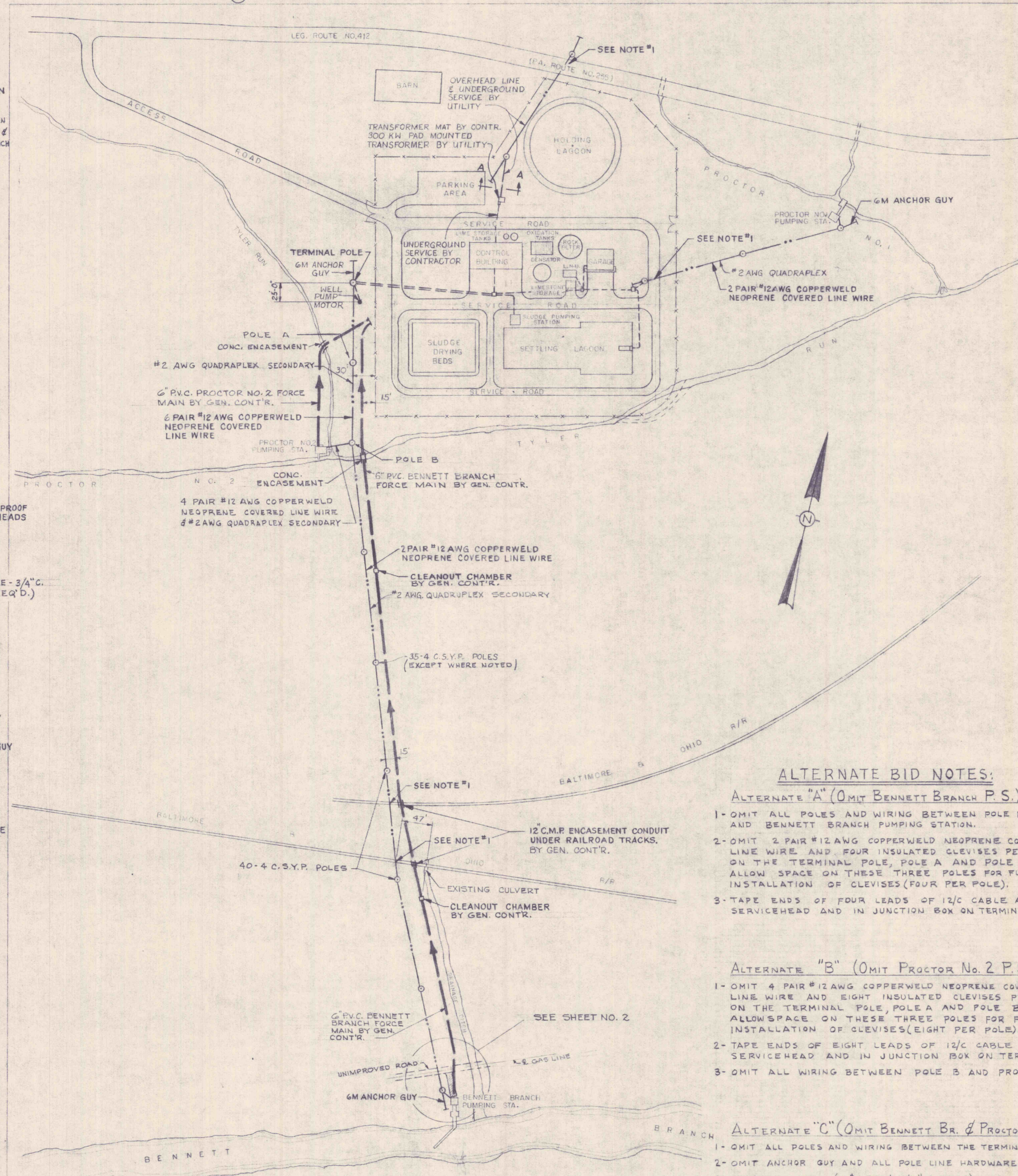
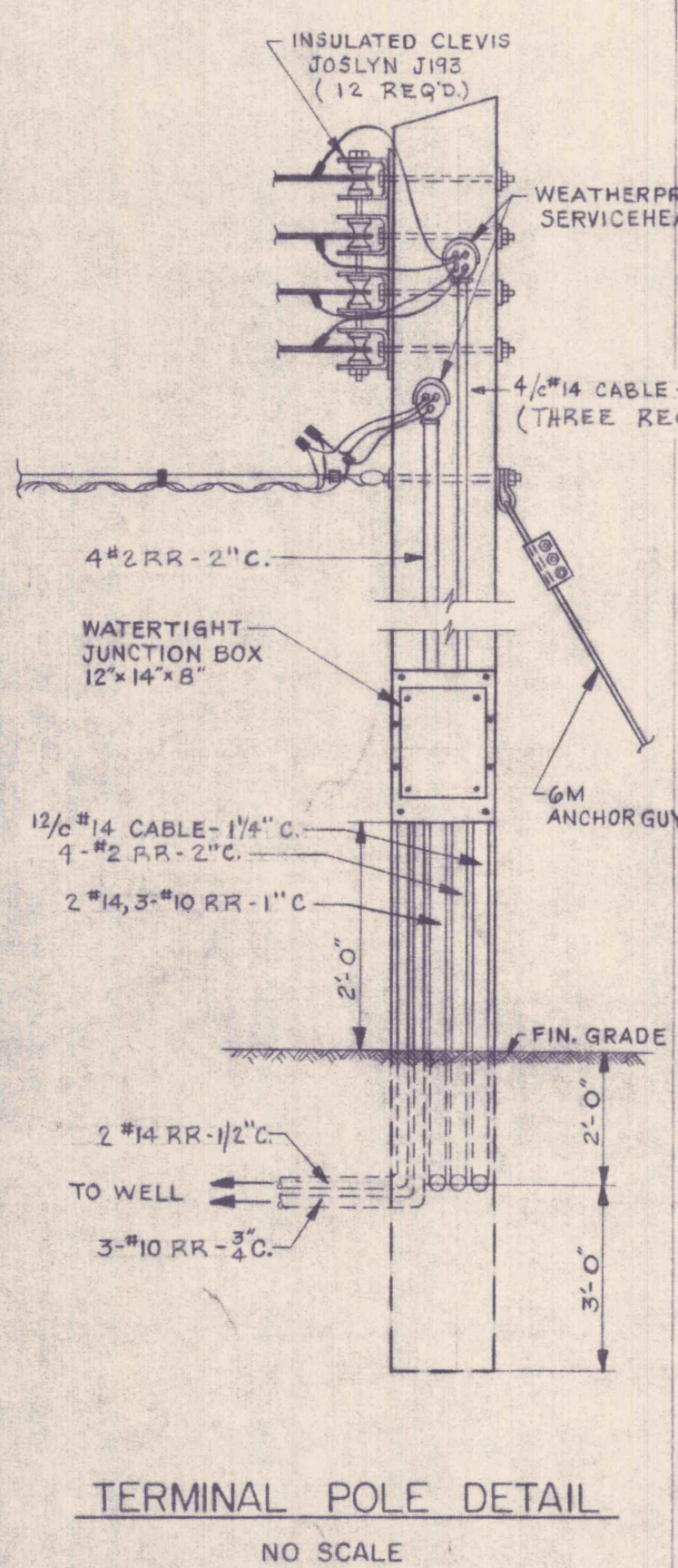
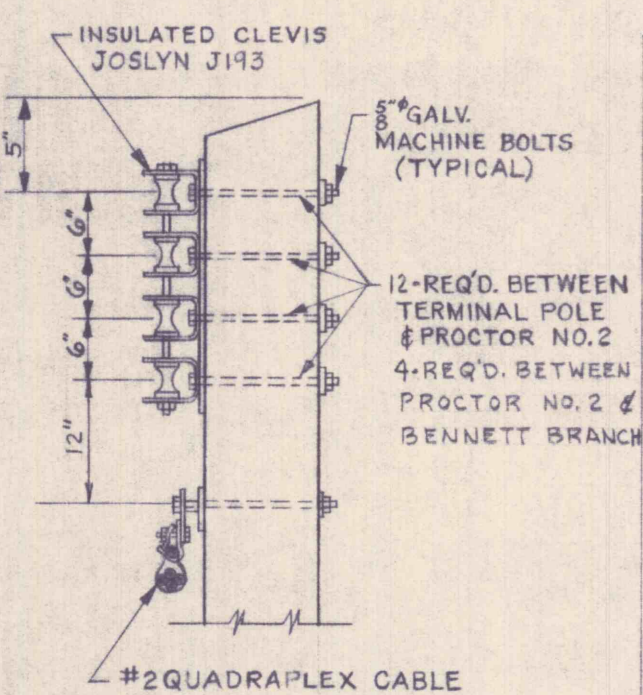


- REINFORCEMENT BARS**
- (R1) #4 DEFORMED STRAIGHT 3'-6" - 18 REQ'D.
 - (R2) #5 DEFORMED STRAIGHT 5'-4" - 8 REQ'D.
 - (R3) #5 DEFORMED BENT 3'-4" - 8 REQ'D.



ALTERNATE BID NOTES:

ALTERNATE "A" (OMIT BENNETT BRANCH P.S.)

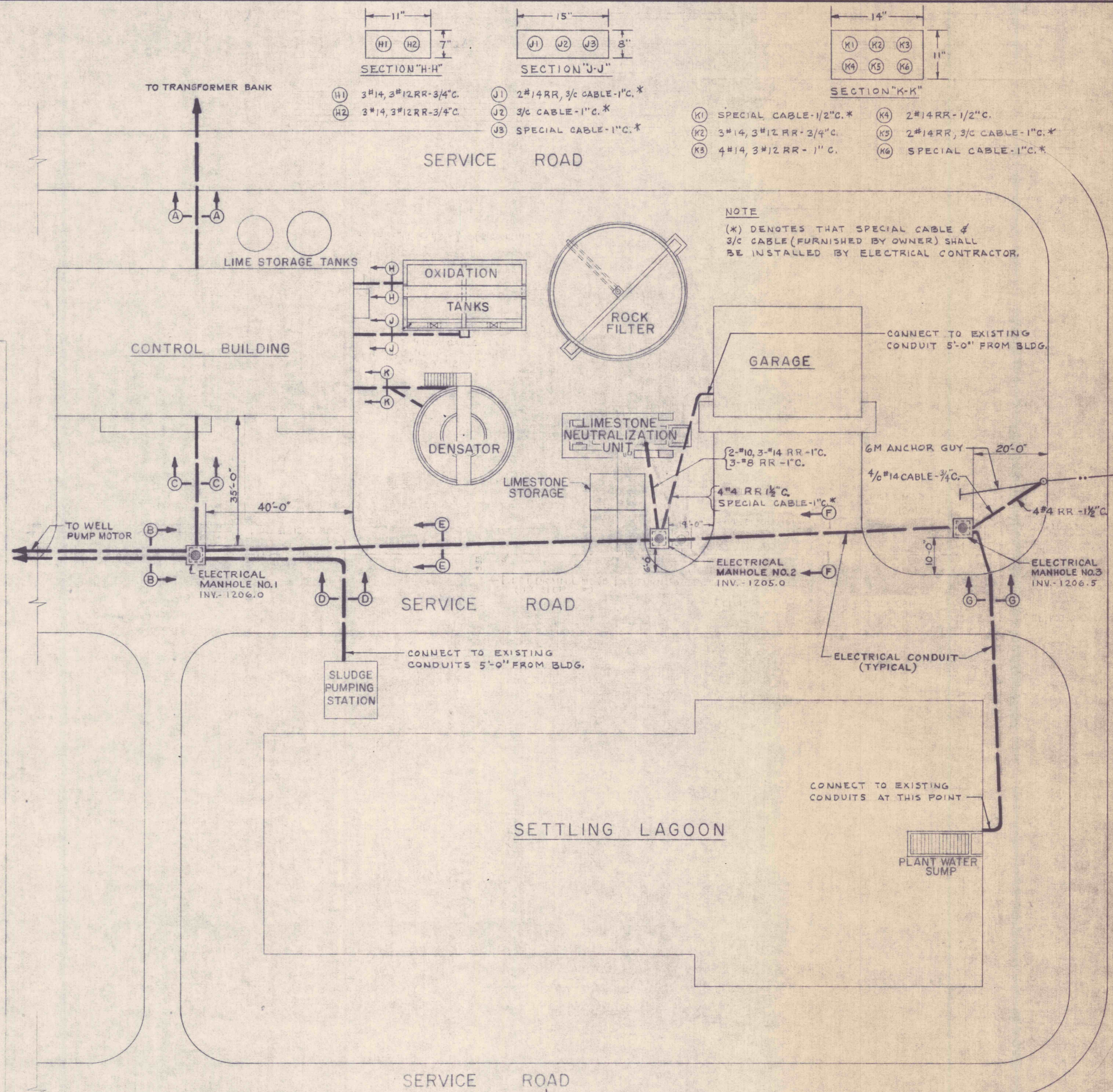
- 1- OMIT ALL POLES AND WIRING BETWEEN POLE B AND BENNETT BRANCH PUMPING STATION.
- 2- OMIT 2 PAIR #12 AWG COPPERWELD NEOPRENE COVERED LINE WIRE AND FOUR INSULATED CLEVISES PER POLE ON THE TERMINAL POLE, POLE A AND POLE B. ALLOW SPACE ON THESE THREE POLES FOR FUTURE INSTALLATION OF CLEVISES (FOUR PER POLE).
- 3- TAPE ENDS OF FOUR LEADS OF 12/C CABLE AT SERVICEHEAD AND IN JUNCTION BOX ON TERMINAL POLE.

ALTERNATE "B" (OMIT PROCTOR NO. 2 P.S.)

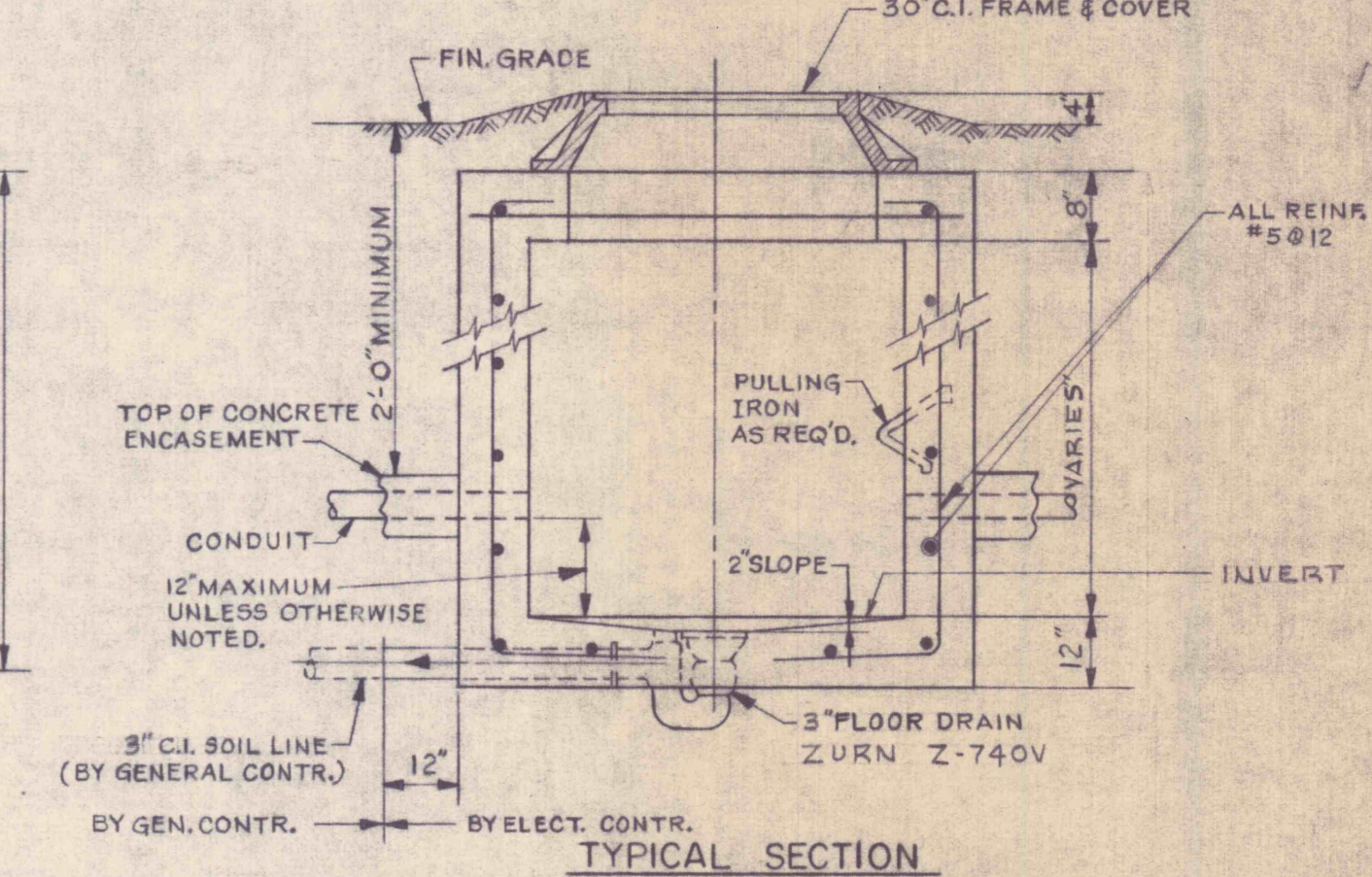
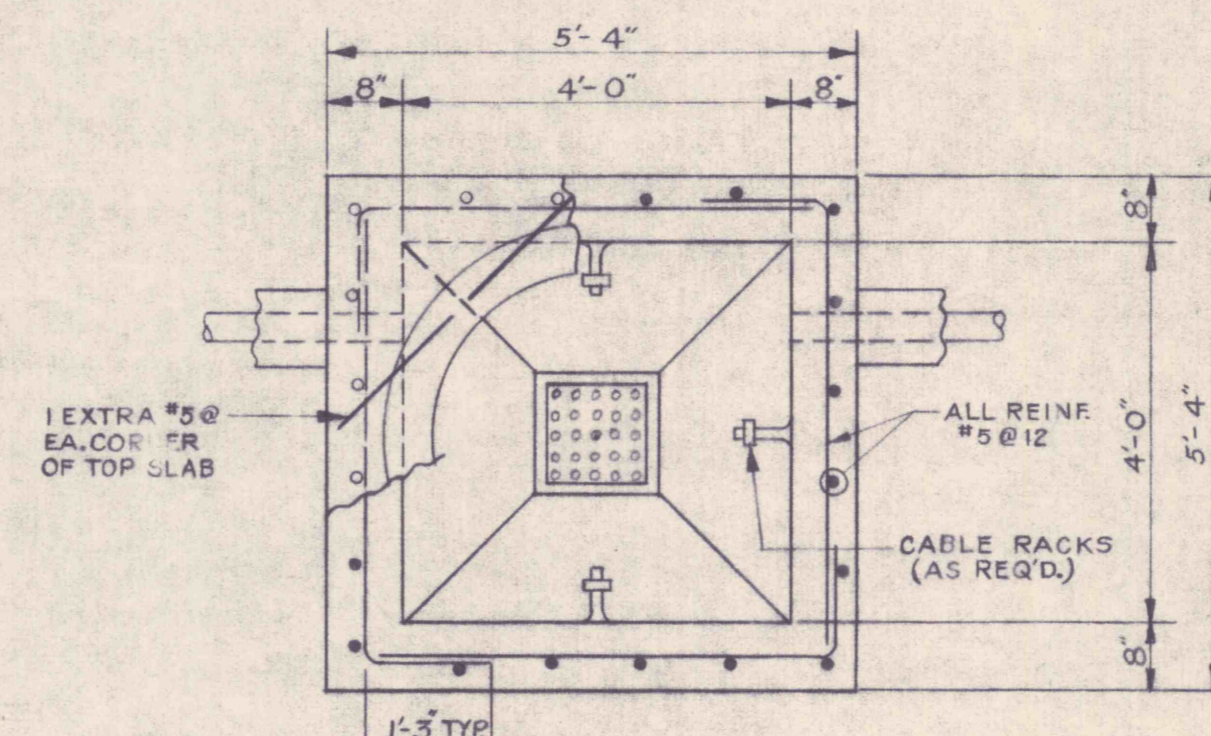
- 1- OMIT 4 PAIR #12 AWG COPPERWELD NEOPRENE COVERED LINE WIRE AND EIGHT INSULATED CLEVISES PER POLE ON THE TERMINAL POLE, POLE A AND POLE B. ALLOW SPACE ON THESE THREE POLES FOR FUTURE INSTALLATION OF CLEVISES (EIGHT PER POLE).
- 2- TAPE ENDS OF EIGHT LEADS OF 12/C CABLE AT SERVICEHEAD AND IN JUNCTION BOX ON TERMINAL POLE.
- 3- OMIT ALL WIRING BETWEEN POLE B AND PROCTOR NO. 2 P.S.

ALTERNATE "C" (OMIT BENNETT BR. & PROCTOR NO. 2 P.S.)

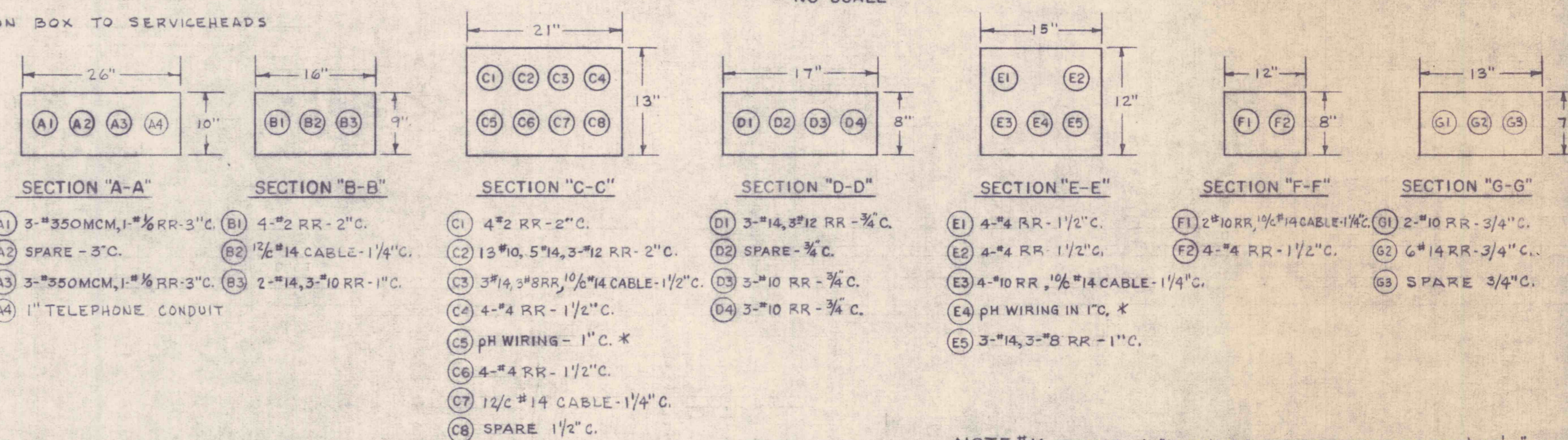
- 1- OMIT ALL POLES AND WIRING BETWEEN THE TERMINAL POLE & PUMPING STATIONS.
- 2- OMIT ANCHOR GUY AND ALL POLE LINE HARDWARE ON THE TERMINAL POLE.
- 3- OMIT ALL WIRING (2 #2 RR-1 1/2" CABLE) BETWEEN THE CONTROL BUILDING AND THE TERMINAL POLE. CONDUITS (2" & 1 1/4") SHALL BE SPARES AND CAPPED IN JUNCTION BOX.
- 4- OMIT ALL CONDUITS AND WIRING FROM JUNCTION BOX TO SERVICEHEADS ON THE TERMINAL POLE.



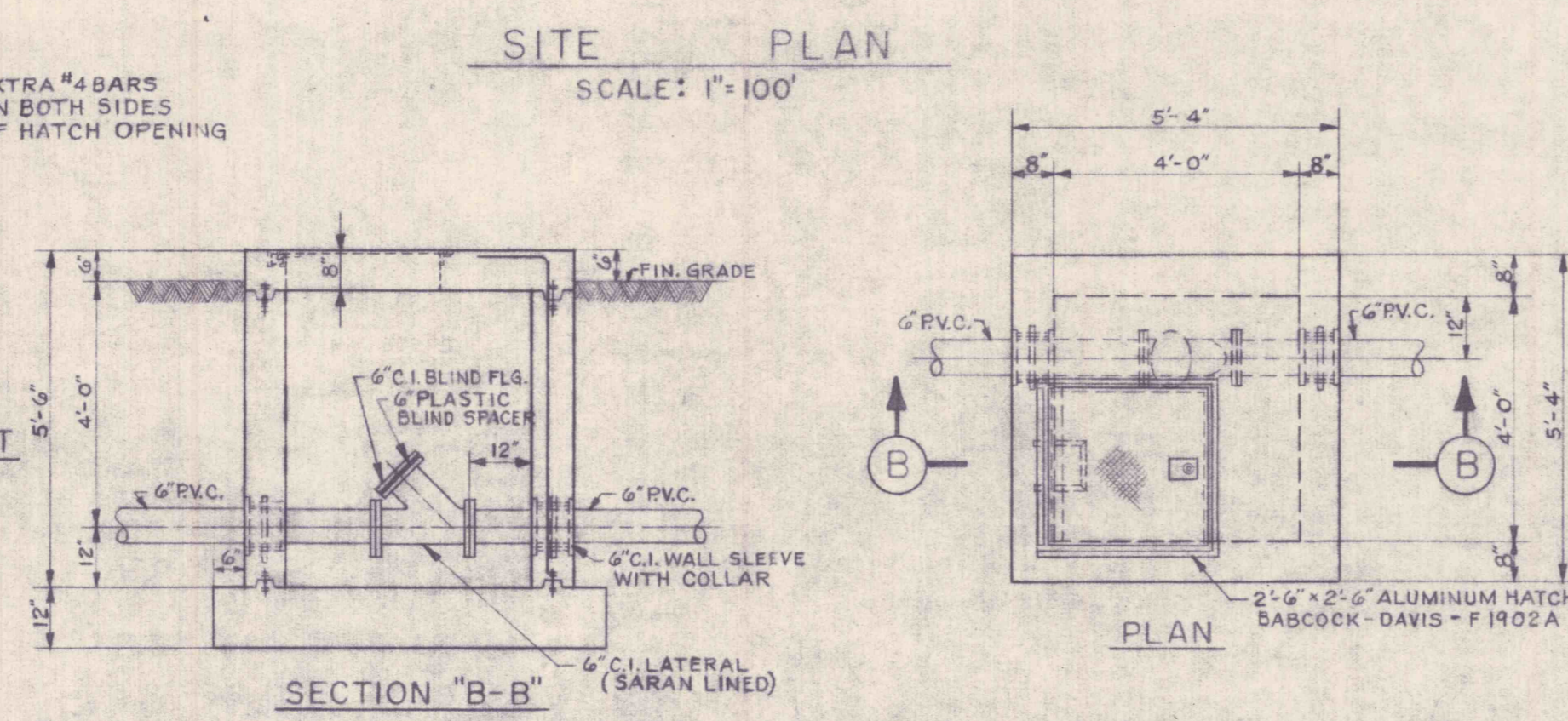
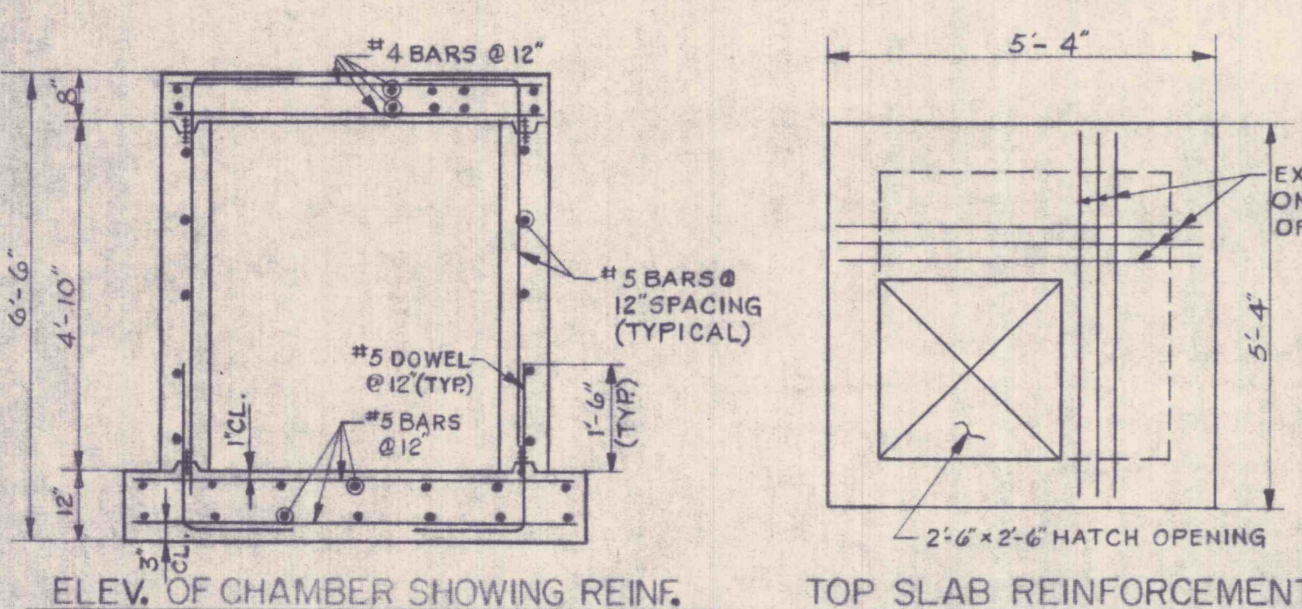
NOTE
(A) DENOTES THAT SPECIAL CABLE & 3/C CABLE (FURNISHED BY OWNER) SHALL BE INSTALLED BY ELECTRICAL CONTRACTOR.



ELECTRICAL MANHOLE DETAIL



NOTE #1: PROVIDE 18'-0" MINIMUM CLEARANCE ABOVE ROADS & 2'-0" ABOVE RAILROADS.



REVISIONS			
NO.	DESCRIPTION	DATE	BY



GANNETT FLEMING CORDDRY & CARPENTER, INC.
ENGINEERS

600 N. SECOND ST. HARRISBURG, PENNA.

DATE: JUNE 1967

THE PENNSYLVANIA STATE UNIVERSITY
CONSTRUCTION OF
A MINE DRAINAGE TREATMENT PLANT
HUSTON TOWNSHIP, CLEARFIELD CO., PA.

24

SITE PLAN ELECTRICAL

I-17533