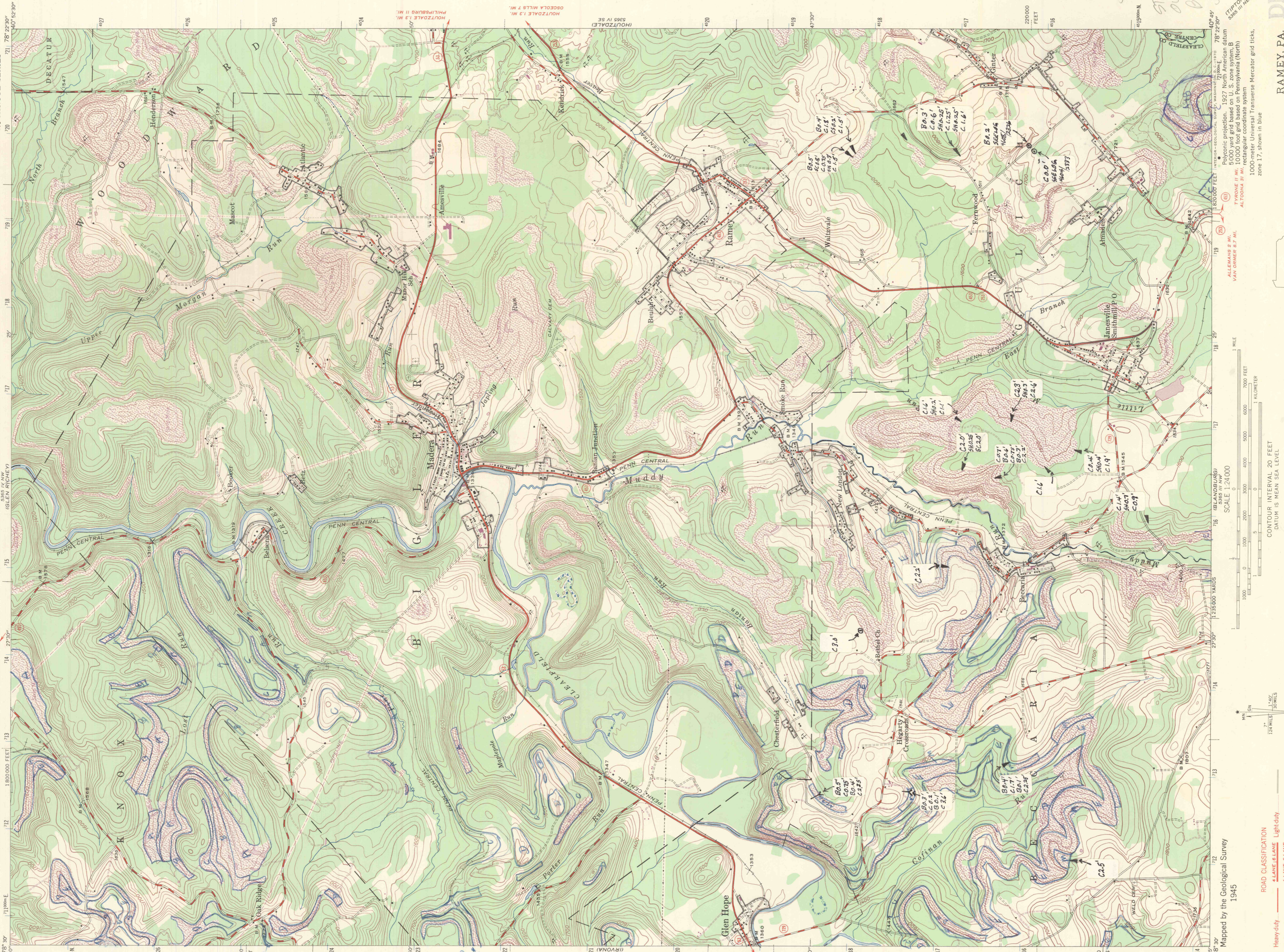


5883 N.E.
COURTAVILLE

UNITED STATES
DEPARTMENT OF THE INTERIOR
GEOLOGICAL SURVEY

STATE OF PENNSYLVANIA
DEPARTMENT OF INTERNAL AFFAIRS
TOPOGRAPHIC AND GEOLOGIC SURVEY

PENNSYLVANIA
RAMEY QUADRANGLE
7 1/2-MINUTE SERIES



Map by the Geological Survey
1945

ROAD CLASSIFICATION
Heavy-duty — Light-duty
Medium-duty — Unimproved dirt
U.S. Route — State Route

Revisions shown in purple compiled in cooperation with State of Pa. and U.S. Geological Survey maps taken 1969. This information not field checked.

UTM GRID AND 1960 MAGNETIC NORTH DECLINATION AT CENTER OF SHEET

SCALE 1:24,000
1:235,000 YARDS
1:100,000 METERS

CONTOUR INTERVAL 20 FEET
DATUM IS MEAN SEA LEVEL

1 MILE
1 KILOMETER

QUADRANGLE LOCATION
PENNSYLVANIA

INTERIOR-RECORDS DIVISION, WASHINGTON, D.C. 20540
POLYCONIC PROJECTION, 1927 NORTH AMERICAN DATUM
5000 YARD GRID BASED ON U.S. ZONE SYSTEM, B
10000 FOOT GRID BASED ON PENNSYLVANIA (NORTH)
RECTANGULAR COORDINATE SYSTEM
1000-METER UNIVERSAL TRANSVERSE MERCATOR GRID TICKS,
ZONE 17, SHOWN IN BLUE

PHOTOREVISED 1969
1945
AMS 5465 IV SW-SERIES V831

DIXON'S
STATIONERY
801 MARKET STREET
LEAHIGH, PA. 18048

JOHN - IGNORE STRIPPING IN OUTLINES IN ONE ETC. JUST INCLUDE MAINTAIN COUNTS FROM ME

FOR SALE BY U.S. GEOLOGICAL SURVEY, WASHINGTON, D.C. 20542
A FOLDER DESCRIBING TOPOGRAPHIC MAPS AND SYMBOLS IS AVAILABLE ON REQUEST