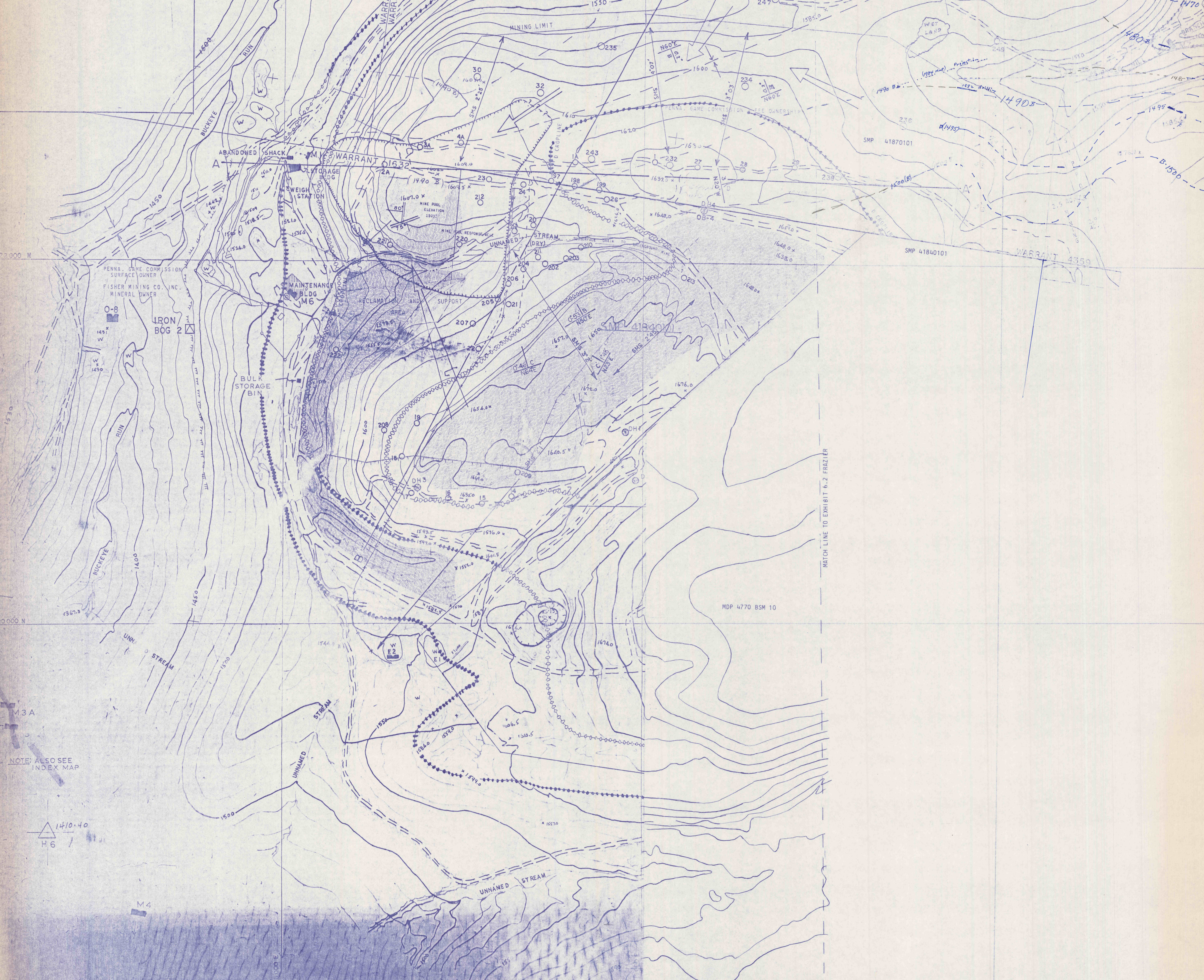


TEST HOLE	SURFACE ELEVATION	BOTTOM OF COAL	WATER LEVEL
1	1433.7	1526.7	1541.7
2	1420.7	1484.3	1539.8
3	1591.0	1521.5	1488.6
4	1402.5	1524.1	Mine Water 1502.77
5	1402.5	1523.9	1502.4
6	1431.5	1504.1	1518.8
7	1417.9	1525.2	1547.87
8	1506.9	1586.1	(1526.9 Top)
9	1502.1	1599	Dry
10	1403.3	1515.3	1513.1
11	1577.0	1526.0	1489.6
12	1587.7	1525.7	1493.7
13	1521.6	1519.8	1484.1
14	1547.5	1520.5	1488.5
15	1508.0	1520.0	1490.0
16	1509.3	1535.8	1486.3
17	1571.8	1520.3	1486.3

ALL ABOVE SURFICIFT DATA - 1971.



NOTE: ALSO SEE INDEX MAP

REVISIONS

1	HYDRAULIC SEALS VULNERABLE - SUPPORT AREA INCREASED.
2	MINOR BOUNDARY CORRECTIONS.
3	MINING - SUPPORT

NOTES

- PROPOSED MINE
- EXISTING MINE
- EXISTING ROAD
- EXISTING STREAM
- EXISTING DRAINAGE
- EXISTING WELLS
- EXISTING STRUCTURES
- EXISTING SURFACE MINE
- EXISTING UNDERGROUND MINE
- EXISTING SURFACE MINE

LEGEND

- PROPOSED MINE
- EXISTING MINE
- EXISTING ROAD
- EXISTING STREAM
- EXISTING DRAINAGE
- EXISTING WELLS
- EXISTING STRUCTURES
- EXISTING SURFACE MINE
- EXISTING UNDERGROUND MINE
- EXISTING SURFACE MINE

OCT 2 8 1982

ENVIRONMENTAL RESOURCES MAP

FISHER MINING CO. INC. SMP 418401

PINE TOWNSHIP, LYCOMING COUNTY, PENNSYLVANIA

SCALE 1" = 200 FEET

CONTOUR INTERVAL = 10 FEET

PREPARED BY

BOYER KANTZ AND ASSOCIATES

EDWIN F. KOPPE, GEOLOGIST

MAY 1984

MSHA 10M 36-02703