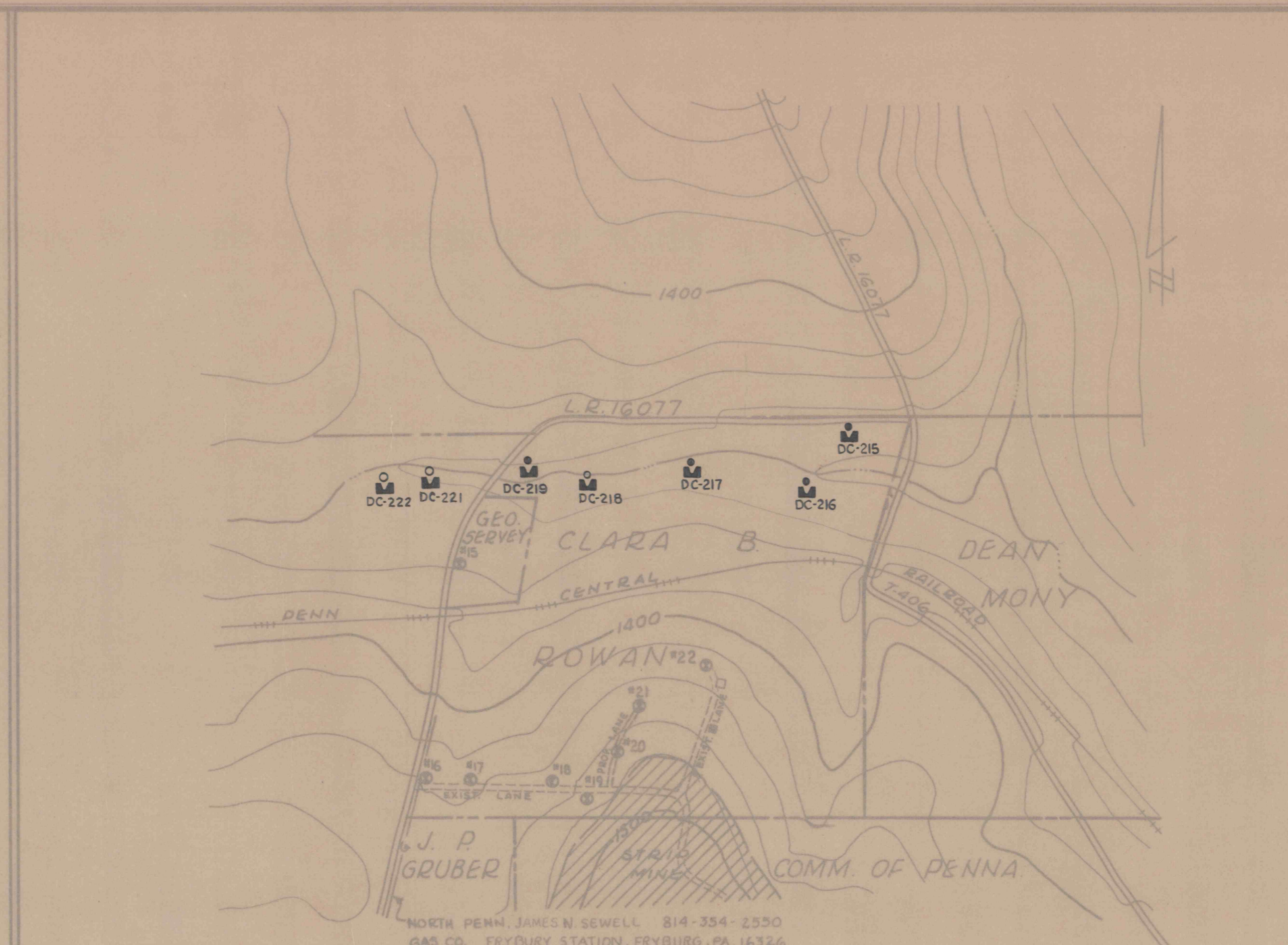




AREA NO. 1 TOBY CREEK



AREA NO. 1 DEER CREEK

UTILITIES LIST

AREA 1 TOBY CREEK

NATIONAL TRANSIT CO.  
W. DIXON  
BOX 282  
CHICORA, PA. 16025  
Ph 412-445-2215

AREA 2 TOBY CREEK

BELL TELEPHONE CO.  
R. PRICE  
239 PENNSYLVANIA WEST  
WARREN, PA. 16365  
Ph 814-723-1850

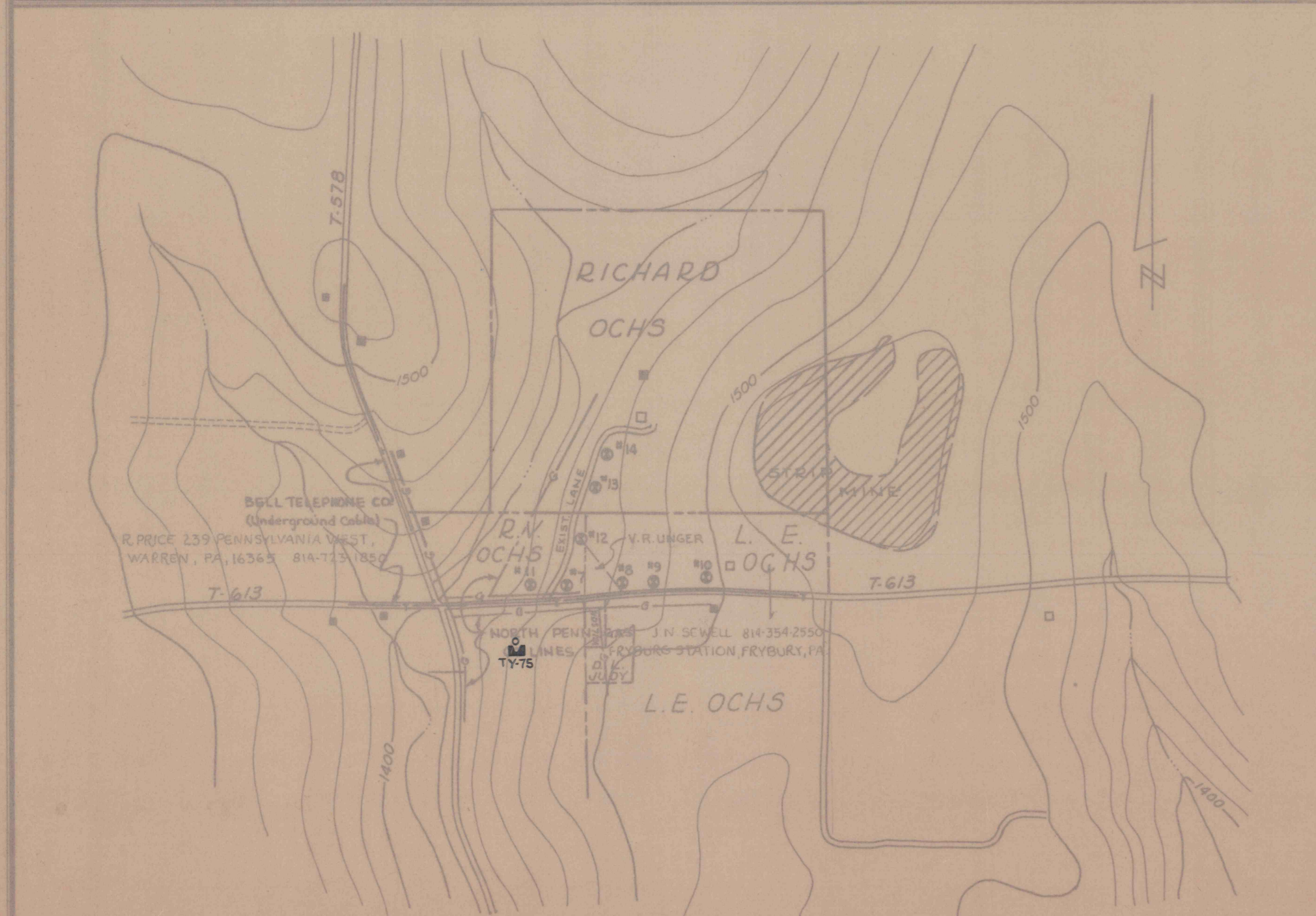
NORTH PENN. GAS CO.  
J. N. SEWELL  
FRYBURG STATION  
FRYBURG, PA. 16326  
Ph 814-354-2550

AREA 1 DEER CREEK

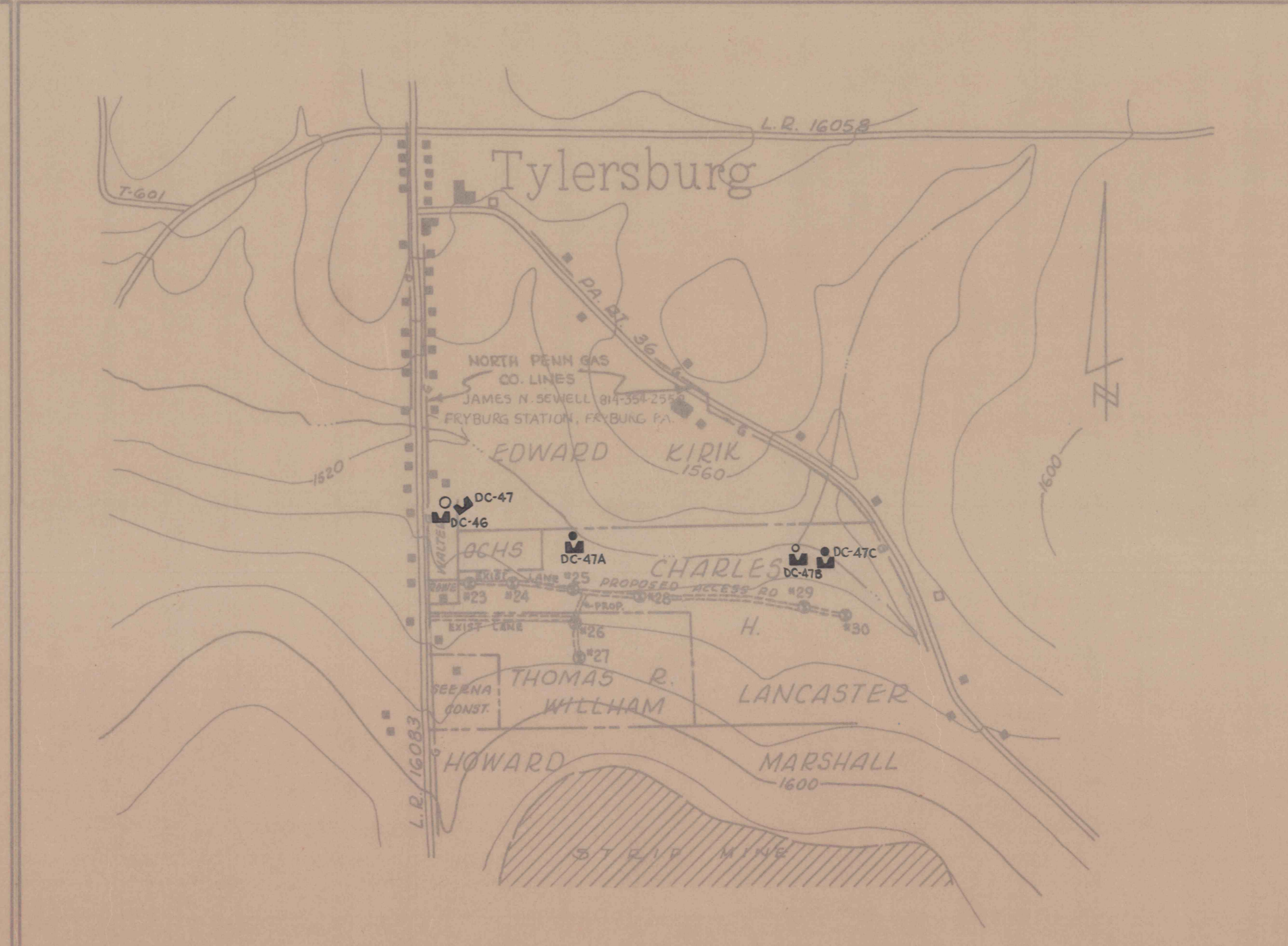
NORTH PENN. GAS CO.  
J. N. SEWELL  
FRYBURG STATION  
FRYBURG, PA. 16326  
Ph 814-354-2550

AREA 2 DEER CREEK

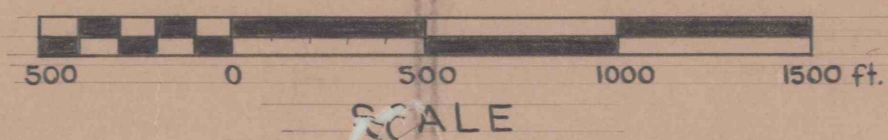
NORTH PENN. GAS CO.  
J. N. SEWELL  
FRYBURG STATION  
FRYBURG, PA. 16326  
Ph 814-354-2550



AREA NO. 2 TOBY CREEK



AREA NO. 2 DEER CREEK



| NO.   | DATE   | REVISION    | APPR. |
|---|--------|-------------|-------|
|   |        |             |       |
| SUBMITTED   |        |             |       |
| <i>John W. Foreman</i>  |        |             |       |
| APPROVED  |        |             |       |
| CHIEF, DIVISION OF MINE AREA RESTORATION  |        |             |       |
| APPROVED  |        |             |       |
| DIRECTOR - BUREAU OF RESOURCES PROGRAM  |        |             |       |
|   |        |             |       |
| COMMONWEALTH OF PENNSYLVANIA<br>DEPARTMENT OF ENVIRONMENTAL RESOURCES<br>OFFICE OF RESOURCES MANAGEMENT |        |             |       |
| CONTRACT NO. SL 191-0-101.5   |        |             |       |
| DRILLING PROJECT<br>TOBY & DEER CREEK WATERSHEDS<br>CLARION COUNTY, PA.                                 |        |             |       |
| GWIN, DOBSON & FOREMAN, INC.<br>CONSULTING ENGINEERS<br>ALTOONA, PENNSYLVANIA                           |        |             |       |
| DETAIL OF DRILL LOCATIONS   |        |             |       |
| DRAWN BY<br>L.B.B.  | DATE   | DRAWING NO. |       |
| 10/15/83  |        |             |       |
| SCALE<br>1"=500'  | 4 of 4 |             |       |

*Additional Land Dist. & Land Use Plans*