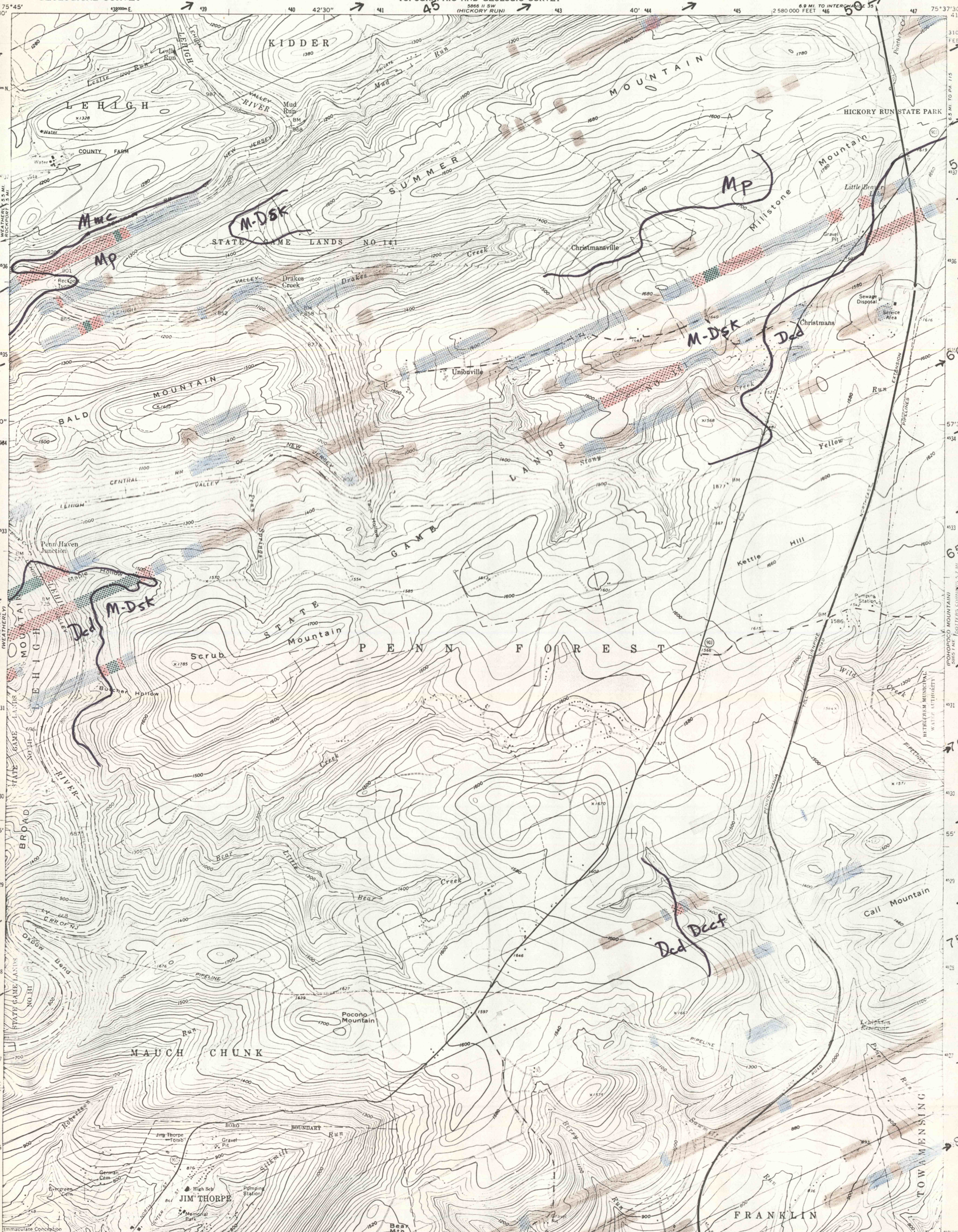
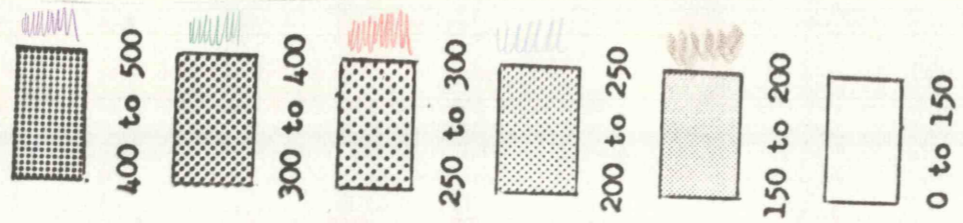


UNITED STATES
DEPARTMENT OF THE INTERIOR
GEOLOGICAL SURVEY

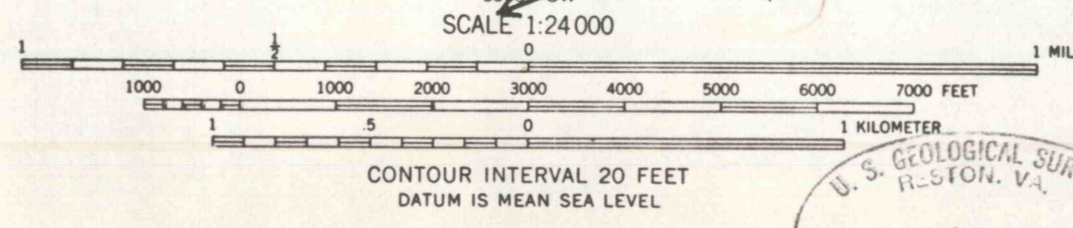
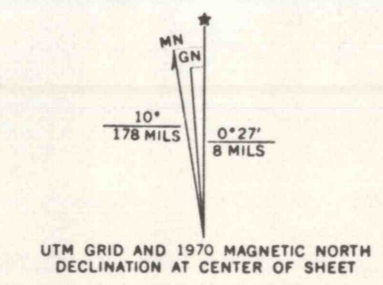
COMMONWEALTH OF PENNSYLVANIA
DEPARTMENT OF ENVIRONMENTAL RESOURCES
TOPOGRAPHIC AND GEOLOGIC SURVEY

CHRISTMANS QUADRANGLE
PENNSYLVANIA-CARBON CO.
7.5 MINUTE SERIES (TOPOGRAPHIC)

Explanation
Approximate ranges of total gamma
radioactivity recorded along
flight lines (counts per second)



Mapped, edited, and published by the Geological Survey
Control by USGS and USC&GS
Topography from aerial photographs by photogrammetric methods
Aerial photographs taken 1951 and 1952. Field check 1960
Polyconic projection. 1927 North American datum
10,000-foot grid based on Pennsylvania coordinate system,
north zone
1000-meter Universal Transverse Mercator grid ticks,
zone 18, shown in blue
Fine red dashed lines indicate selected fence and field lines where
generally visible on aerial photographs. This information is unchecked
Red tint indicates area in which only
landmark buildings are shown



U. S. Geological Survey
OPEN FILE REPORT 75-91
This report is preliminary and has not been edited or reviewed for conformity with Geological Survey standards or nomenclature.

ROAD CLASSIFICATION
Heavy duty
Light-duty
Medium-duty
Unimproved dirt
State Route

THIS MAP COMPLIES WITH NATIONAL MAP ACCURACY STANDARDS
FOR SALE BY U. S. GEOLOGICAL SURVEY, WASHINGTON, D. C. 20242
A FOLDER DESCRIBING TOPOGRAPHIC MAPS AND SYMBOLS IS AVAILABLE ON REQUEST

MAR 11 1975
U.S. GEOLOGICAL SURVEY
LIBRARY

Revisions shown in purple compiled in cooperation with
State of Pennsylvania agencies from aerial photographs
taken 1970. This information not field checked

CHRISTMANS, PA.
N4052.5-W7537.5/7.5
1962
PHOTOREVISED 1970
AMS 5865 1 NW-SERIES 570

AIRBORNE RADIOACTIVITY SURVEY OF PARTS OF CARBON, SCHUYLKILL,
AND MONROE COUNTIES, PENNSYLVANIA
by
Harry Klemic and Margaret C. Cooper

Pennsylvania (Northeast) Radioactivity. 1:24,000. 1975
sheet 4
cop. 1