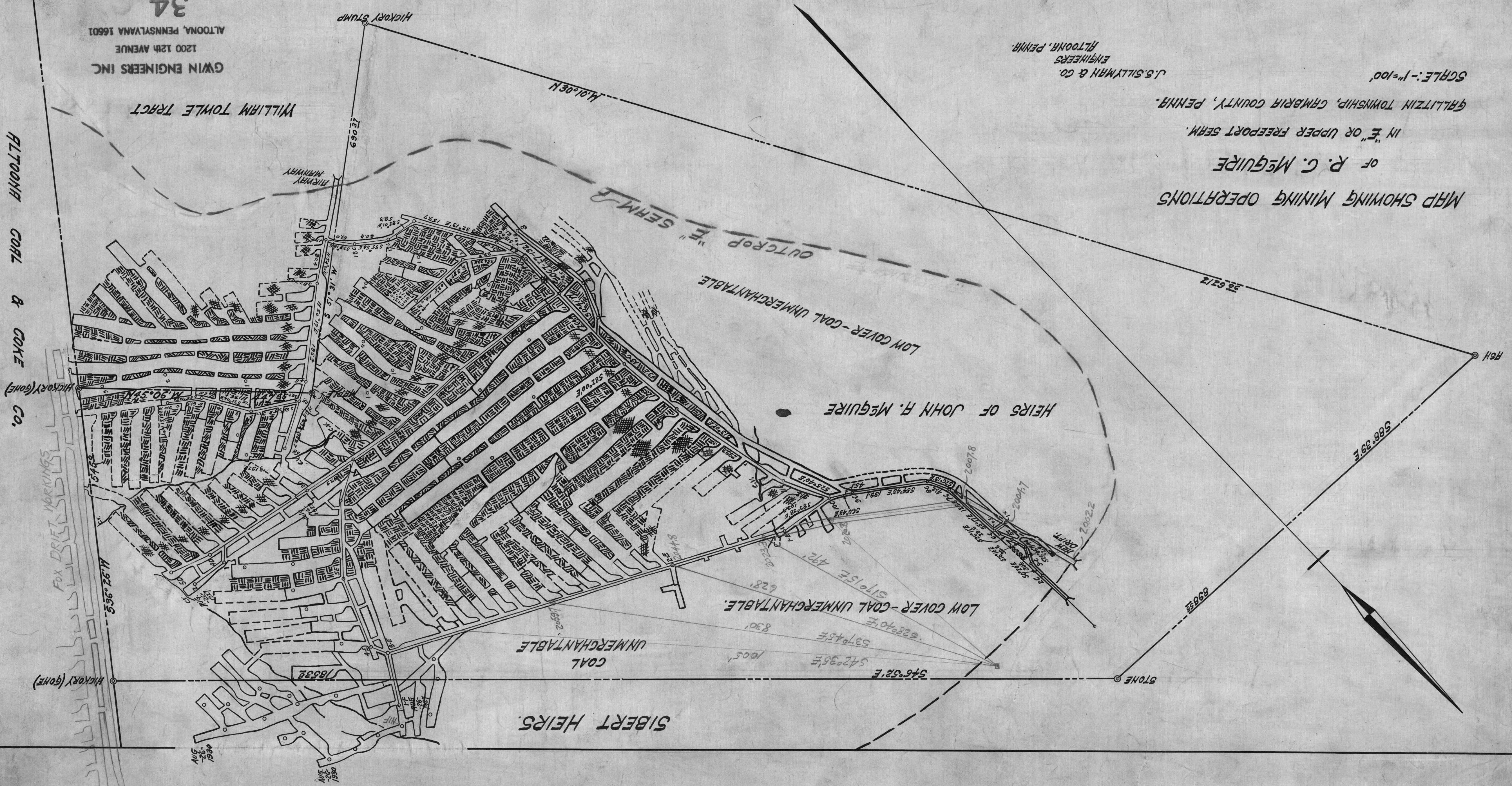


~~815-AB~~  
C7714-7

MAP SHOWING MINING OPERATIONS  
OF R. C. MCGUIRE  
IN "E" OR UPPER FREEPORT SEM.  
GALLITZIN TOWNSHIP, CAMBRIA COUNTY, PENNA.  
SCALE: -1"=100'

U.S. SILLYMAN & CO.  
ENGINEERS  
ALTOONA, PENNA.



34  
GWIN ENGINEERS INC.  
1200 12th AVENUE  
ALTOONA, PENNSYLVANIA 16601