

PRIVATE WATER SUPPLIES:

NO	RESIDENCE	SOURCE	SUF. EL.	FLOW (GPM)
①	E. P. BENDER	SPRING	1848	2-3
②*	GEO. PARONISH	SPRING	1842	3-4
③*	HARRY DERCOTCH	SPRING	1930	1-2

SAMPLING POINTS-BACKGROUND & MONITORING:

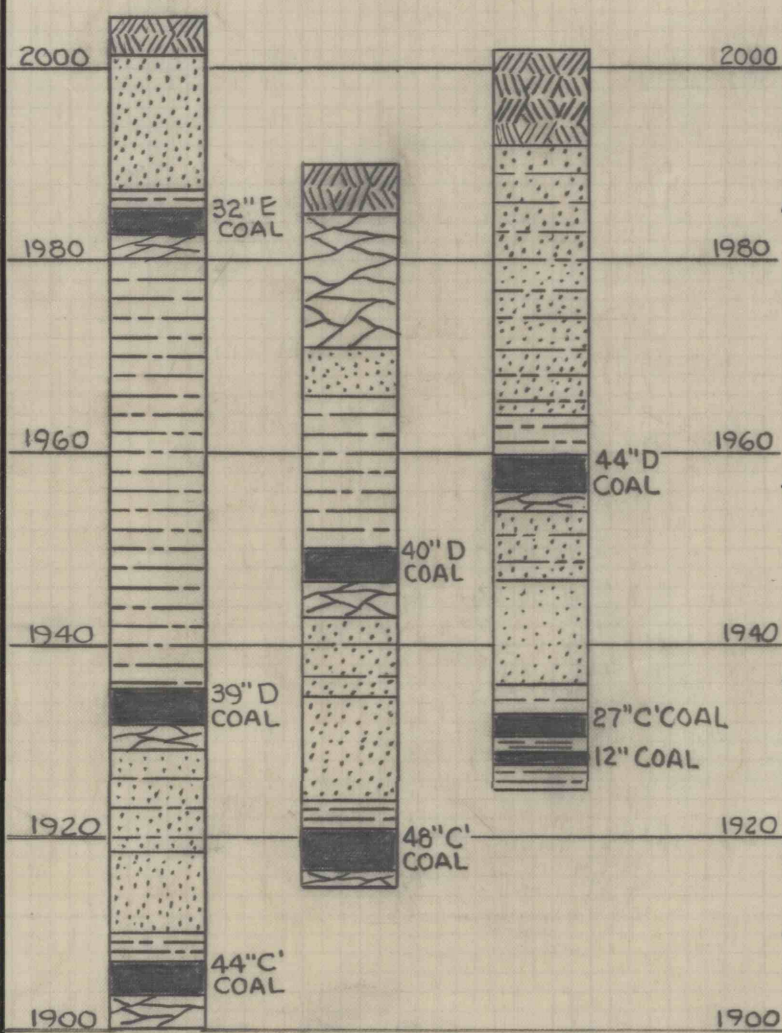
MINE DISCHARGES

NO	DATE SAMPL.	SUF. EL.	FLOW (GPM)
④	1-16-79	1930	15
⑤	1-16-79	1930	15
⑥	1-16-79	1930	20
⑦*	1-16-79	1955	8

NOTE: * = MONITORING POINT

LEGEND:

- ① BACKGROUND SAMPLE
- ②* BACKGROUND SAMPLE & PROP MONITORING POINT
- NON-USGS FLOW
- SPRING
- DIRECTION OF GROUNDWATER FLOW
- 11' A' SLOPE MEASUREMENTS
- ▨ PROPOSED VARIANCE
- ▨ EXISTING STRIP MINED AREAS
- ▨ EXISTING DEEP MINED AREAS



T.H. No. 1 T.H. No. 2 T.H. No. 3
COLUMNAR SECTIONS
SCALE: 1" = 20'

SEAM	COMPOSITE
C	6.8 Ac
D	12.6 Ac
E	7.2 Ac
TOTAL	15.5 Ac

34.8 Ac. - PROPOSED PERMIT AREA

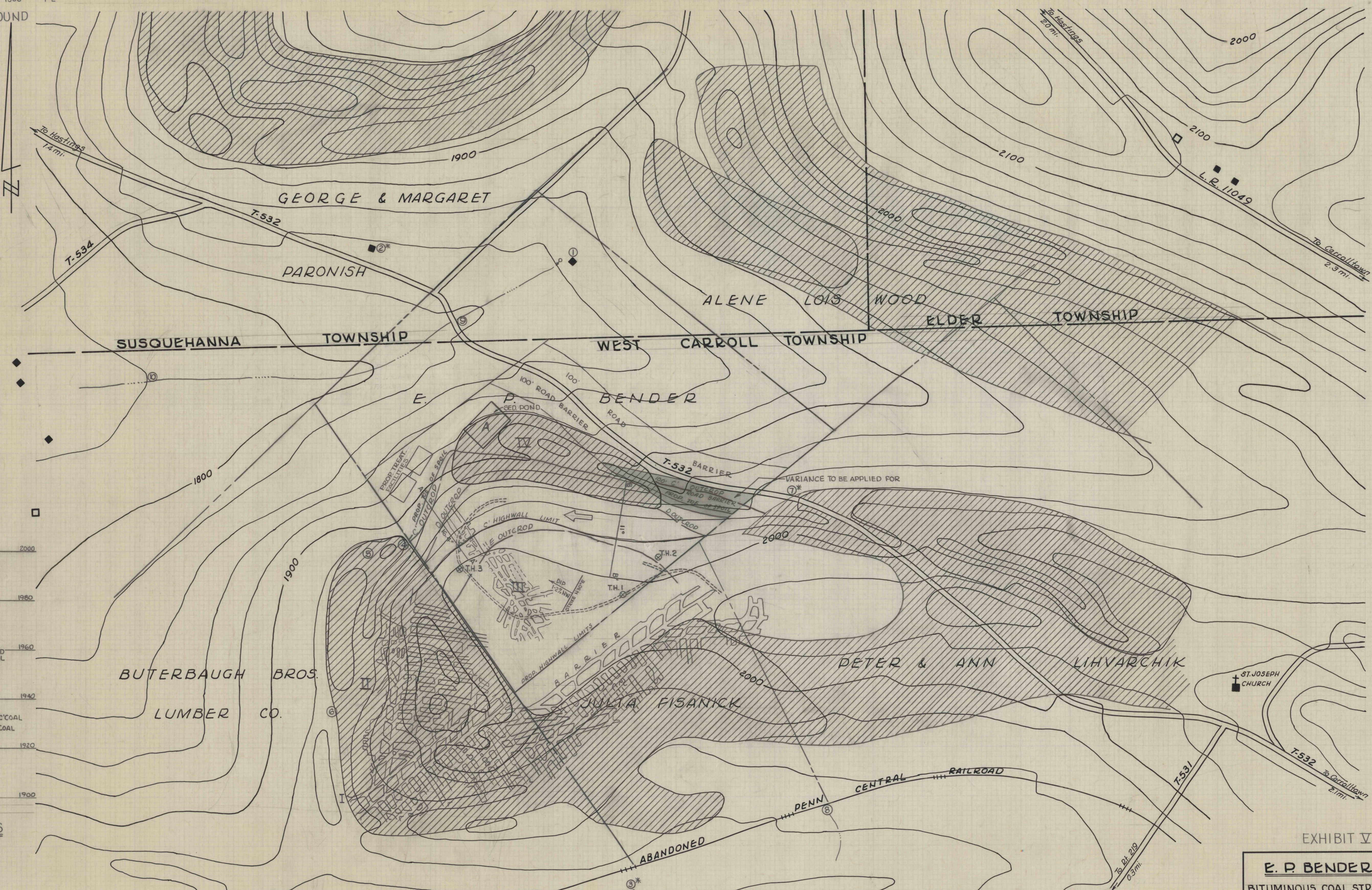


EXHIBIT V
REV. MAR. 1979

E. P. BENDER COAL CO.
BITUMINOUS COAL STRIPPING OPERATION
SITUATE
SUSQUEHANNA & W. CARROLL TWPS, CAMBRIA CO., PA.

SCALE	GWIN, DOBSON & FOREMAN, INC.	SHEET NO.
1" = 200'	CONSULTING ENGINEERS ALTOONA · PENNSYLVANIA	JAN 4, 1976