

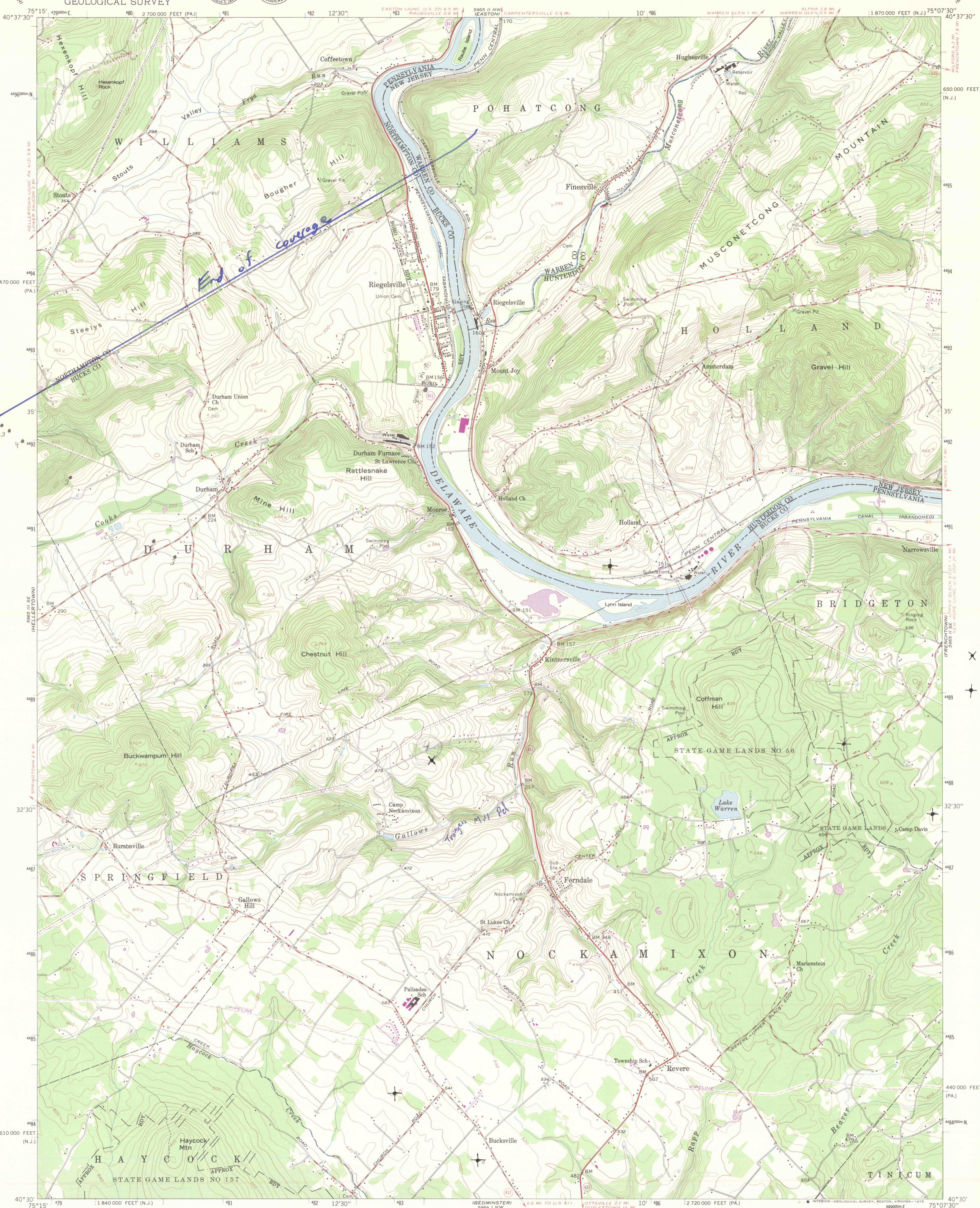
5965 II NE
QUAKERTOWN
5965 I NE

UNITED STATES
DEPARTMENT OF THE INTERIOR
GEOLOGICAL SURVEY



RIEGELSVILLE QUADRANGLE
PENNSYLVANIA-NEW JERSEY
7.5 MINUTE SERIES (TOPOGRAPHIC)

5965 II NW
FRENCHTOWN
5965 I NW

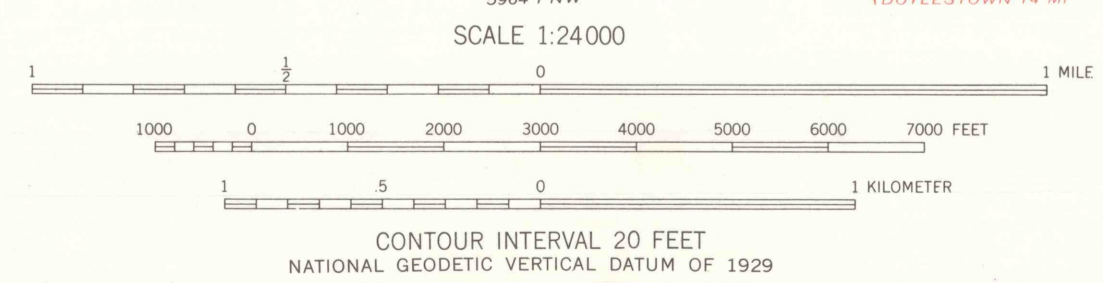
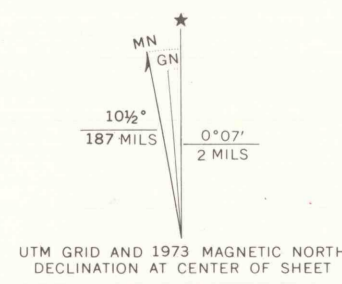


3 3

4

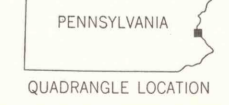
4 stl der.
3 stl der.

Mapped by the Army Map Service
Edited and published by the Geological Survey
Control by USGS and USCGS
Topography from aerial photographs by photogrammetric methods
Field check 1942. Culture revised by the Geological Survey 1956
Polyconic projection. 1927 North American datum
10,000 foot grids based on Pennsylvania coordinate system,
south zone, and New Jersey coordinate system
1000-meter Universal Transverse Mercator grid ticks,
zone 18, shown in blue
Revisions shown in purple compiled by the Geological Survey in
cooperation with State of Pennsylvania agencies from aerial
photographs taken 1968 and 1973. This information not field checked
There may be private inholdings within the boundaries of
the National or State reservations shown on this map



ROAD CLASSIFICATION

Heavy-duty	Light-duty
Medium-duty	Unimproved dirt
U. S. Route	State Route



RIEGELSVILLE, PA.—N. J.

N4030-W7507.5/7.5

1956
PHOTOREVISED 1968 AND 1973
AMS 5965 II SW—SERIES V831

THIS MAP COMPLIES WITH NATIONAL MAP ACCURACY STANDARDS
FOR SALE BY U. S. GEOLOGICAL SURVEY, RESTON, VIRGINIA 22092
A FOLDER DESCRIBING TOPOGRAPHIC MAPS AND SYMBOLS IS AVAILABLE ON REQUEST