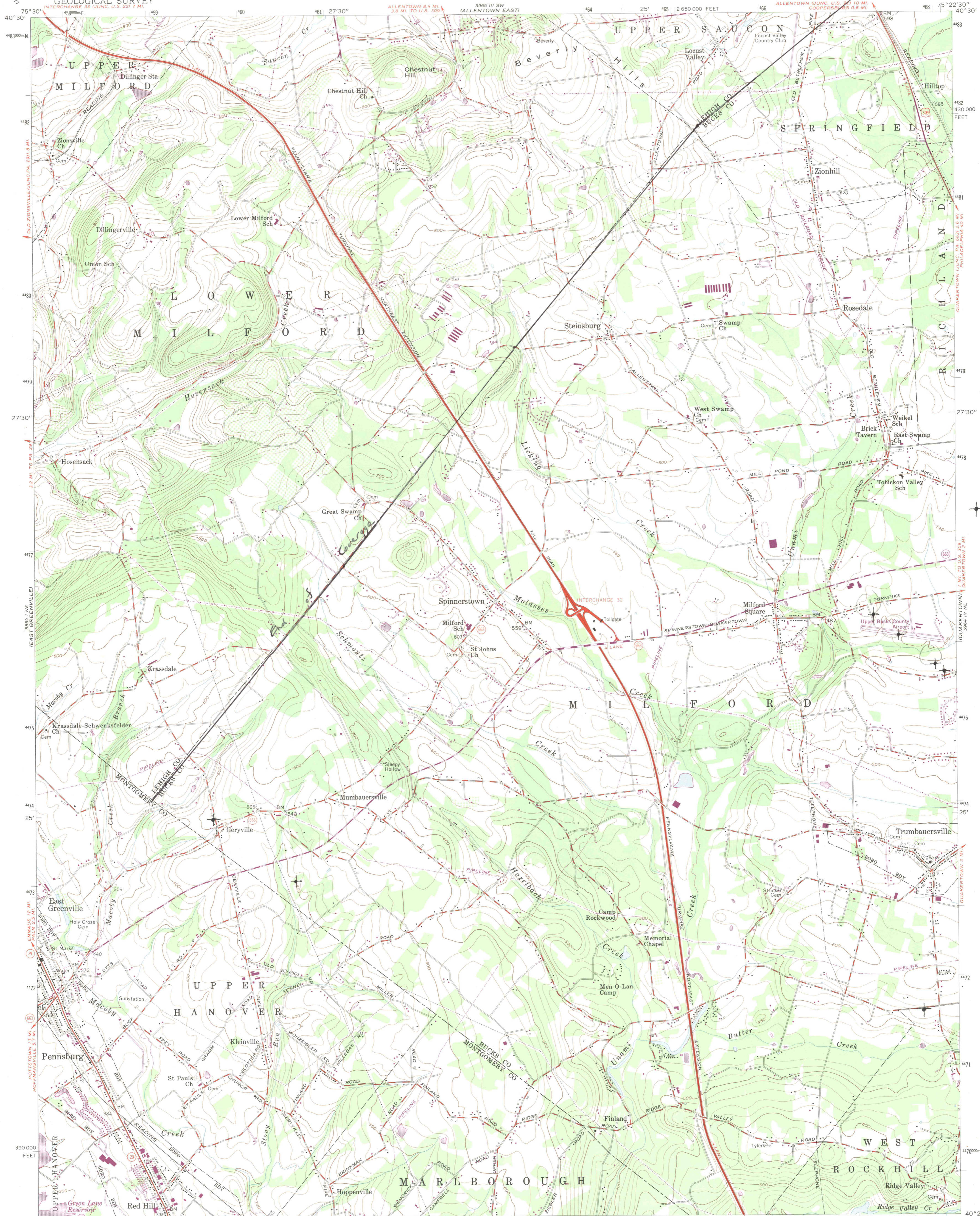
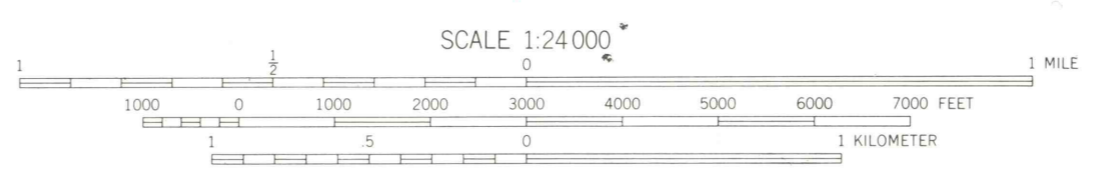
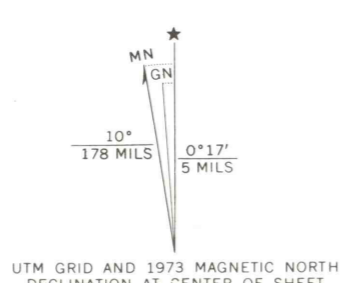


UNITED STATES
DEPARTMENT OF THE INTERIOR
GEOLOGICAL SURVEY

MILFORD SQUARE QUADRANGLE
PENNSYLVANIA
7.5 MINUTE SERIES (TOPOGRAPHIC)



Mapped by the Army Map Service
Edited and published by the Geological Survey
Control by USGS and USC&GS
Topography from aerial photographs by photogrammetric methods, 1943
Culture revised by the Geological Survey 1957
Polyconic projection. 1927 North American datum
10,000-foot grid based on Pennsylvania coordinate system,
south zone.
1000-meter Universal Transverse Mercator grid ticks,
zone 18, shown in blue
Revisions shown in purple compiled by the Geological Survey
in cooperation with State of Pennsylvania agencies from aerial
photographs taken 1968 and 1973. This information not field checked



CONTOUR INTERVAL 20 FEET
NATIONAL GEODETIC VERTICAL DATUM OF 1929



ROAD CLASSIFICATION

Heavy-duty ——— Light-duty ———
Medium-duty ——— Unimproved dirt ———

U.S. Route ——— State Route ———

MILFORD SQUARE, PA.
N4022.5—W7522.5/7.5

FOR SALE BY U.S. GEOLOGICAL SURVEY, RESTON, VIRGINIA 22092
A FOLDER DESCRIBING TOPOGRAPHIC MAPS AND SYMBOLS IS AVAILABLE ON REQUEST

1957
PHOTOREVISED 1968 AND 1973
AMS 5964 IV NW—SERIES V831