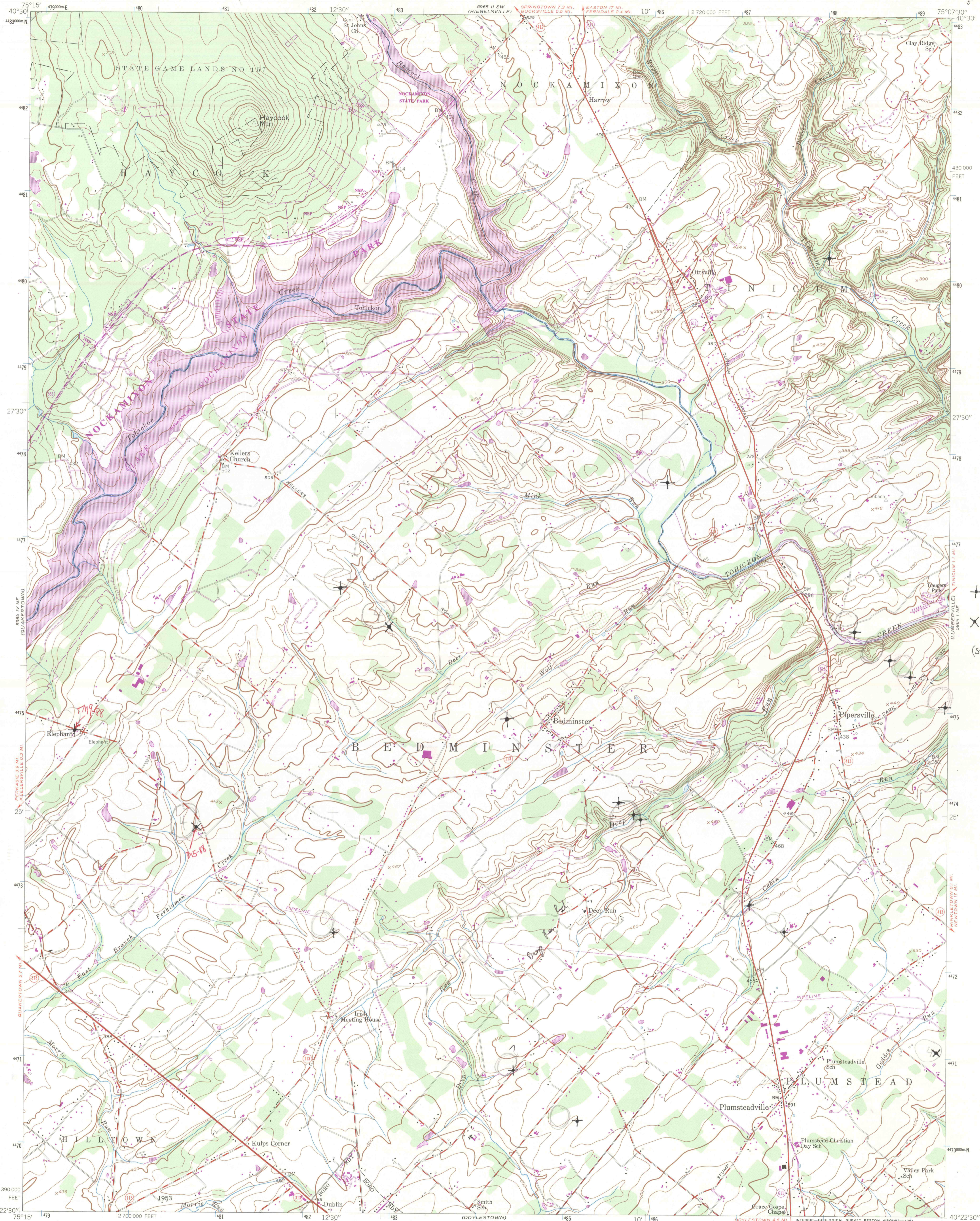


20

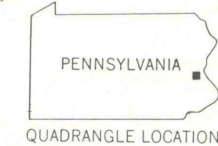
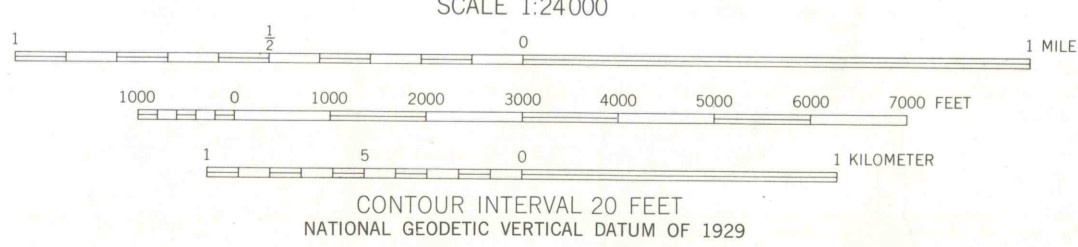
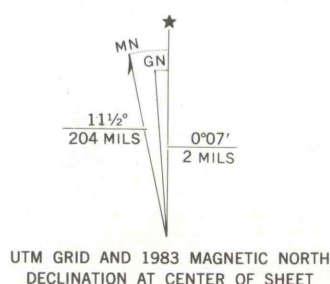


+ 3  
X 4  
(Std dev.)

Mapped by the Army Map Service  
Edited and published by the Geological Survey  
Control by USGS and NOS/NOAA

Topography by photogrammetric methods from aerial photographs taken 1942. Field checked 1942. Culture revised by the Geological Survey 1957.  
Polyconic projection. 10,000-foot grid ticks based on Pennsylvania coordinate system, south zone  
1000-meter Universal Transverse Mercator grid ticks, zone 18, shown in blue  
1927 North American Datum  
To place on the predicted North American Datum 1983  
move the projection lines 6 meters south and  
32 meters west as shown by dashed corner ticks

There may be private inholdings within the boundaries of the National or State reservations shown on this map



ROAD CLASSIFICATION	
Heavy-duty	Light-duty
Medium-duty	Unimproved dirt
U.S. Route	State Route

FOR SALE BY U.S. GEOLOGICAL SURVEY, RESTON, VIRGINIA 22092  
A FOLDER DESCRIBING TOPOGRAPHIC MAPS AND SYMBOLS IS AVAILABLE ON REQUEST

Revisions shown in purple and woodland compiled by the Geological Survey in cooperation with Commonwealth of Pennsylvania agencies from aerial photographs taken 1981 and other sources. This information not field checked. Map edited 1983

BEDMINSTER, PA.  
40075-D2-TF-024

1957  
PHOTOREVISED 1983  
DMA 5964 1 NW—SERIES V831