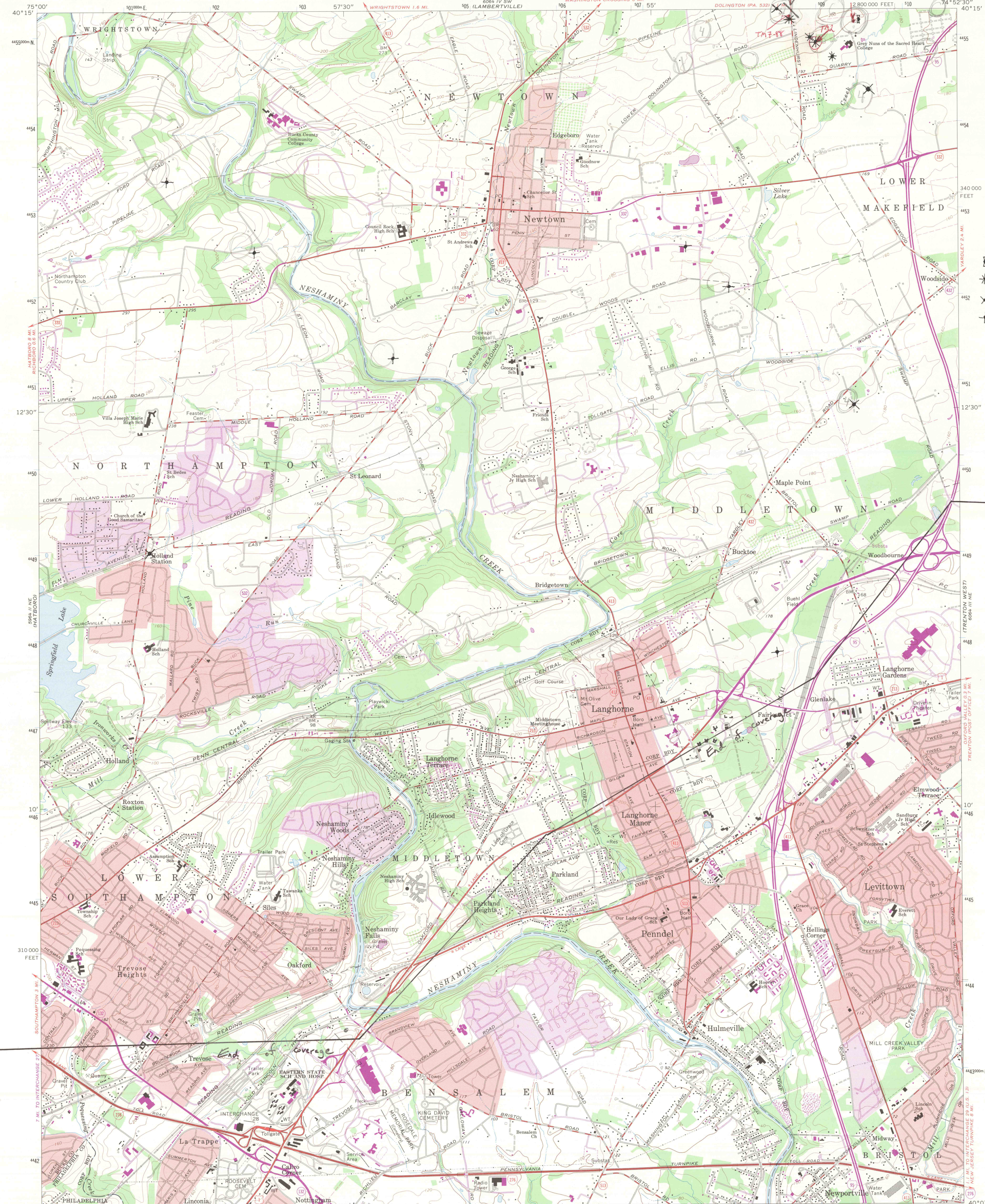


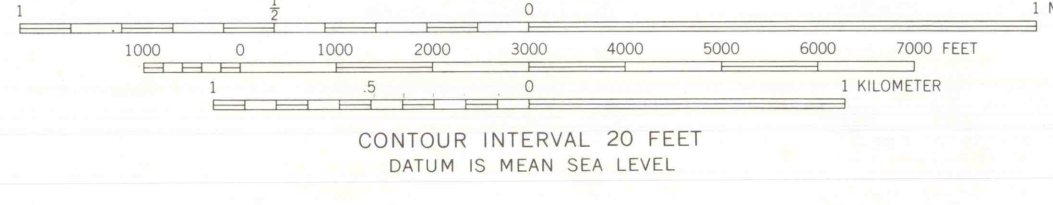
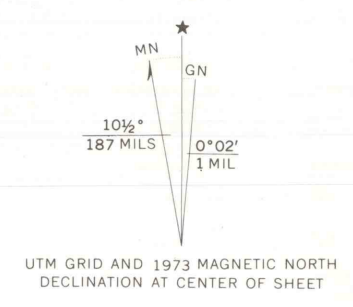
12



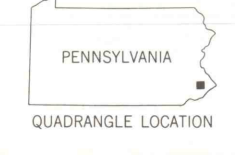
- 6 std dev.
- 5 std dev.
- 4 std dev.
- 3 std dev.

Mapped by the Army Map Service
Edited and published by the Geological Survey
Control by USGS and USC&GS
Topography by photogrammetric methods from aerial photographs
taken 1942. Field checked 1942
Revised by the Geological Survey from aerial photographs
taken 1965. Field checked 1966

Polyconic projection. 1927 North American datum
10,000-foot grid based on Pennsylvania coordinate system, south zone
1000-meter Universal Transverse Mercator grid ticks,
zone 18, shown in blue
Fine red dashed lines indicate selected fence and field lines where
generally visible on aerial photographs. This information is unchecked
Red tint indicates areas in which only landmark buildings are shown



SCALE 1:24 000
CONTOUR INTERVAL 20 FEET
DATUM IS MEAN SEA LEVEL



ROAD CLASSIFICATION

Heavy-duty	Light-duty
Medium-duty	Unimproved dirt
Interstate Route	U.S. Route
	State Route

LANGHORNE, PA.
N4007.5—W7452.5/7.5

THIS MAP COMPLIES WITH NATIONAL MAP ACCURACY STANDARDS
FOR SALE BY U.S. GEOLOGICAL SURVEY, WASHINGTON, D. C. 20242
A FOLDER DESCRIBING TOPOGRAPHIC MAPS AND SYMBOLS IS AVAILABLE ON REQUEST

Revisions shown in purple compiled by the Geological Survey
from aerial photographs taken 1973 and other sources
This information not field checked.
Purple tint indicates extension of urban areas

1966
PHOTOREVISED 1973
AMS 6064 III NW—SERIES W831