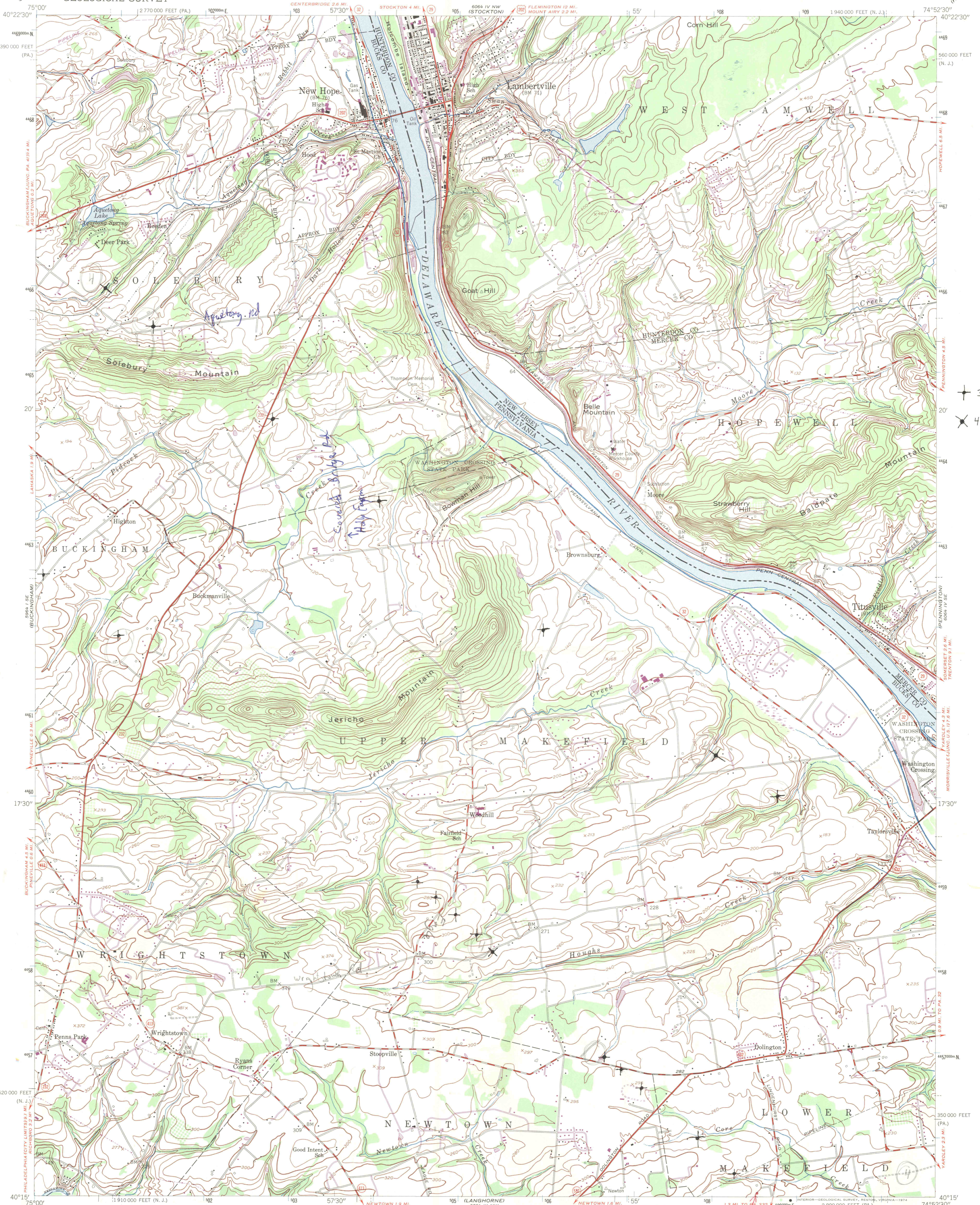
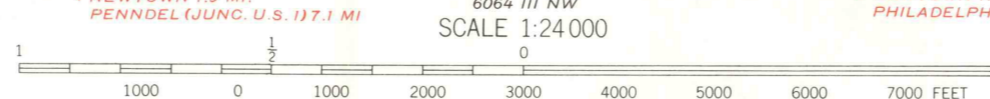
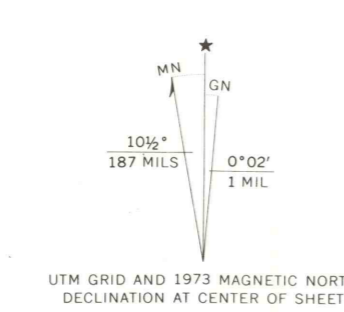


19



3 std dev  
4 std dev

Mapped by Army Map Service  
Edited and published by the Geological Survey  
Control by USGS, USC&GS, and New Jersey Geodetic Survey  
Topography from aerial photographs by stereophotogrammetric methods. Aerial photographs taken 1942  
Culture revised by the Geological Survey 1953  
Polyconic projection. 1927 North American datum  
10,000-foot grids based on Pennsylvania coordinate system, south zone, and New Jersey coordinate system  
1000-meter Universal Transverse Mercator grid ticks, zone 18, shown in blue  
Revisions shown in purple compiled by the Geological Survey in cooperation with State of Pennsylvania agencies from aerial photographs taken 1968 and 1973. This information not field checked



CONTOUR INTERVAL 20 FEET  
NATIONAL GEODETIC VERTICAL DATUM OF 1929



ROAD CLASSIFICATION

Heavy-duty	Light-duty
Medium-duty	Unimproved dirt
U.S. Route	State Route

LAMBERTVILLE, PA.—N. J.

N4015-W7452.5/7.5

1953

PHOTOREVISED 1968 AND 1973

AMS 6064 IV SW—SERIES V831

THIS MAP COMPLIES WITH NATIONAL MAP ACCURACY STANDARDS  
FOR SALE BY U. S. GEOLOGICAL SURVEY, RESTON, VIRGINIA 22092  
A FOLDER DESCRIBING TOPOGRAPHIC MAPS AND SYMBOLS IS AVAILABLE ON REQUEST