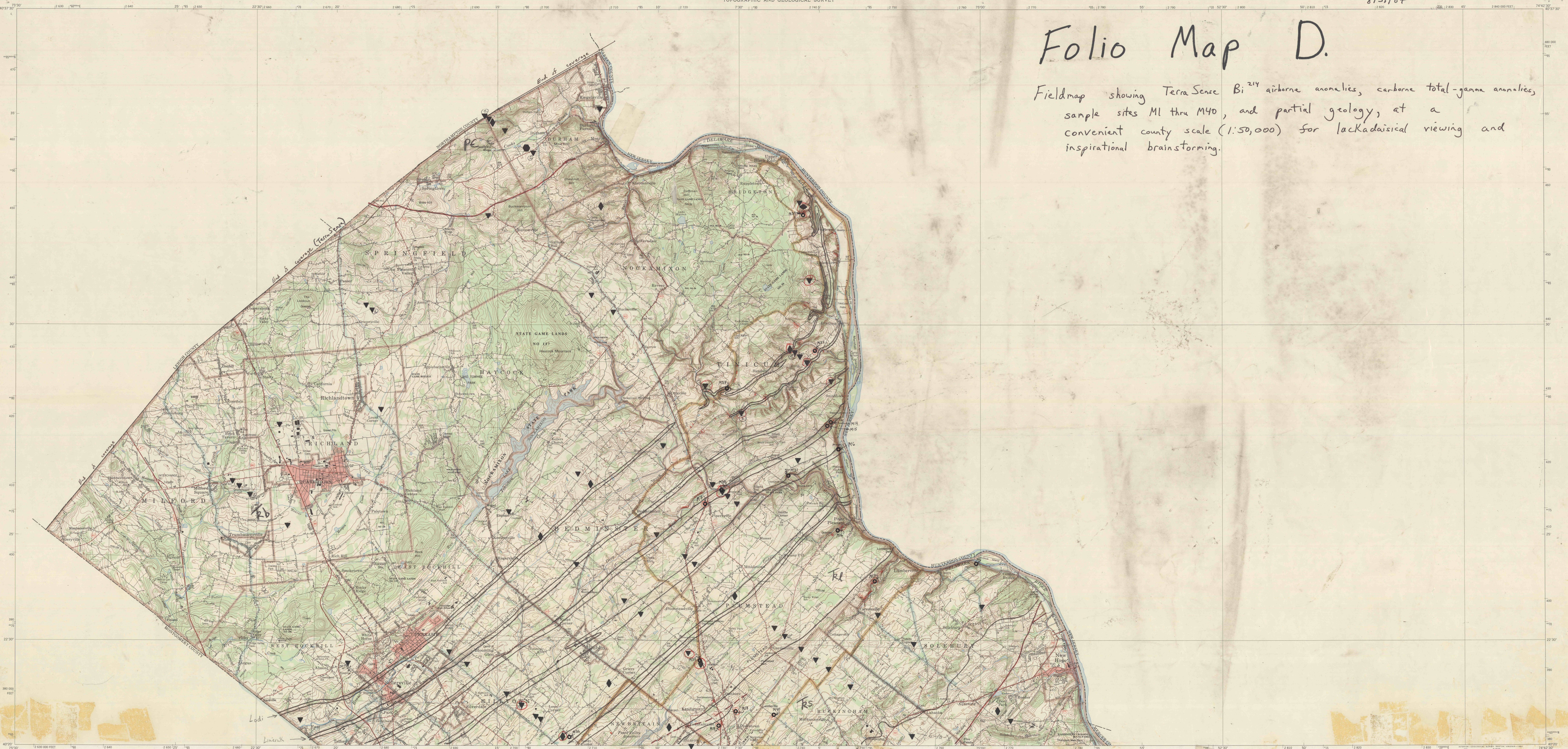


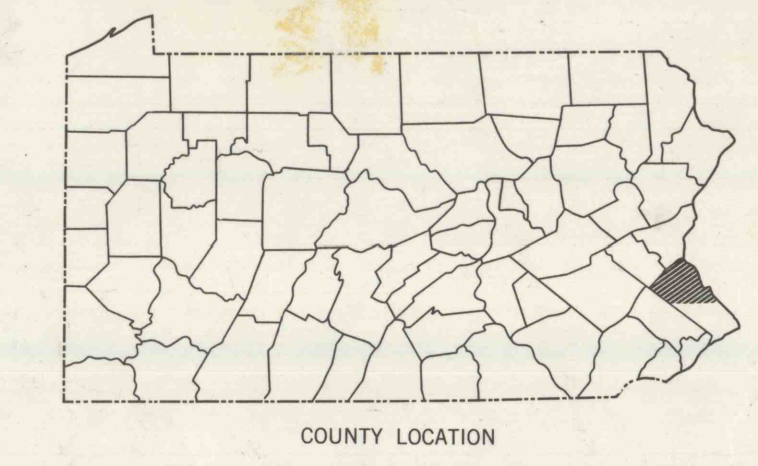
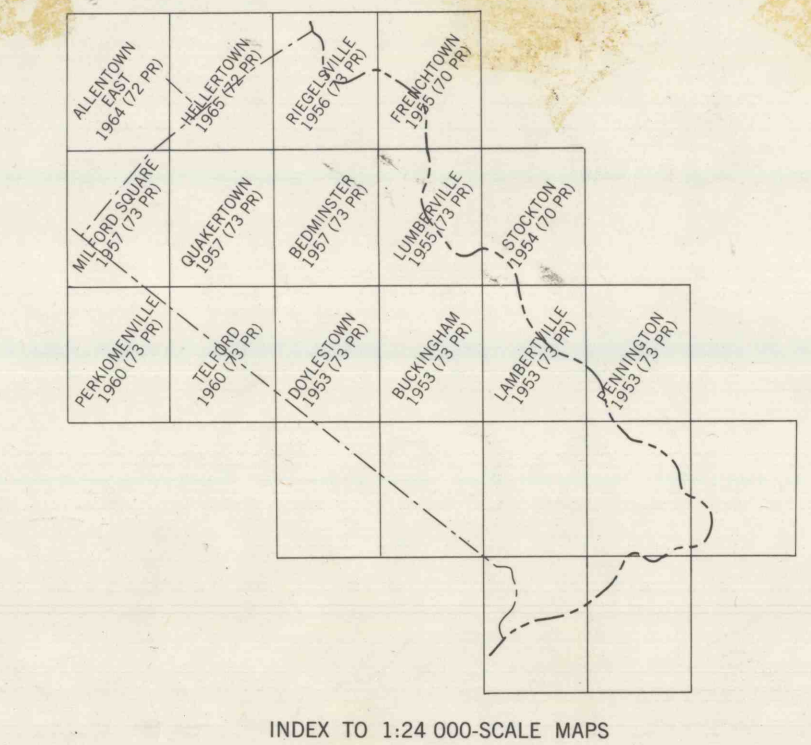
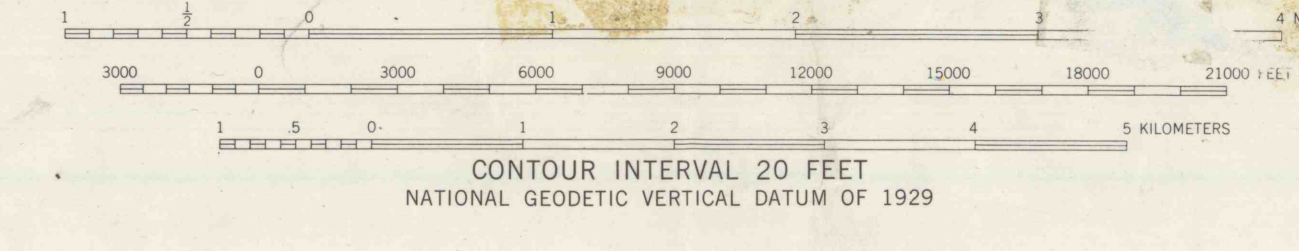
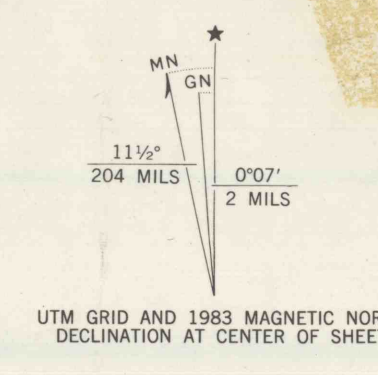
8/31/87

# Folio Map D.

Fieldmap showing TerraSense Bi<sup>214</sup> airborne anomalies, carbone total-gamma anomalies, sample sites M1 thru M40, and partial geology, at a convenient county scale (1:50,000) for lackadaisical viewing and inspirational brainstorming.



Produced by the United States Geological Survey  
Control by USGS and NOS/NOAA  
Compiled from USGS 1:24,000-scale topographic maps  
See index for dates of individual maps  
Planimetry revised from aerial photographs taken 1961  
and other source data. Revised information not field  
checked. Map edited 1983  
Projection and 10 000-foot grid. Pennsylvania coordinate  
system, south zone (Lambert conformal conic)  
5000-meter Universal Transverse Mercator grid ticks,  
zone 18  
1927 North American Datum  
To place on the predicted North American Datum 1983  
move the projection lines 6 meters south and 32 meters  
west  
Red tint indicates areas in which only landmark buildings  
are shown  
There may be private inholdings within the boundaries of  
the National or State reservations shown on this map



ROAD CLASSIFICATION  
Primary highway: hard surface  
Secondary highway: hard surface  
Interstate Route: U.S. Route  
State Route: Light-duty road, hard or improved surface  
Unimproved road  
1983

THIS MAP COMPLIES WITH NATIONAL MAP ACCURACY STANDARDS  
FOR SALE BY U.S. GEOLOGICAL SURVEY, RESTON, VIRGINIA 22092  
A FOLDER DESCRIBING TOPOGRAPHIC MAPS AND SYMBOLS IS AVAILABLE ON REQUEST