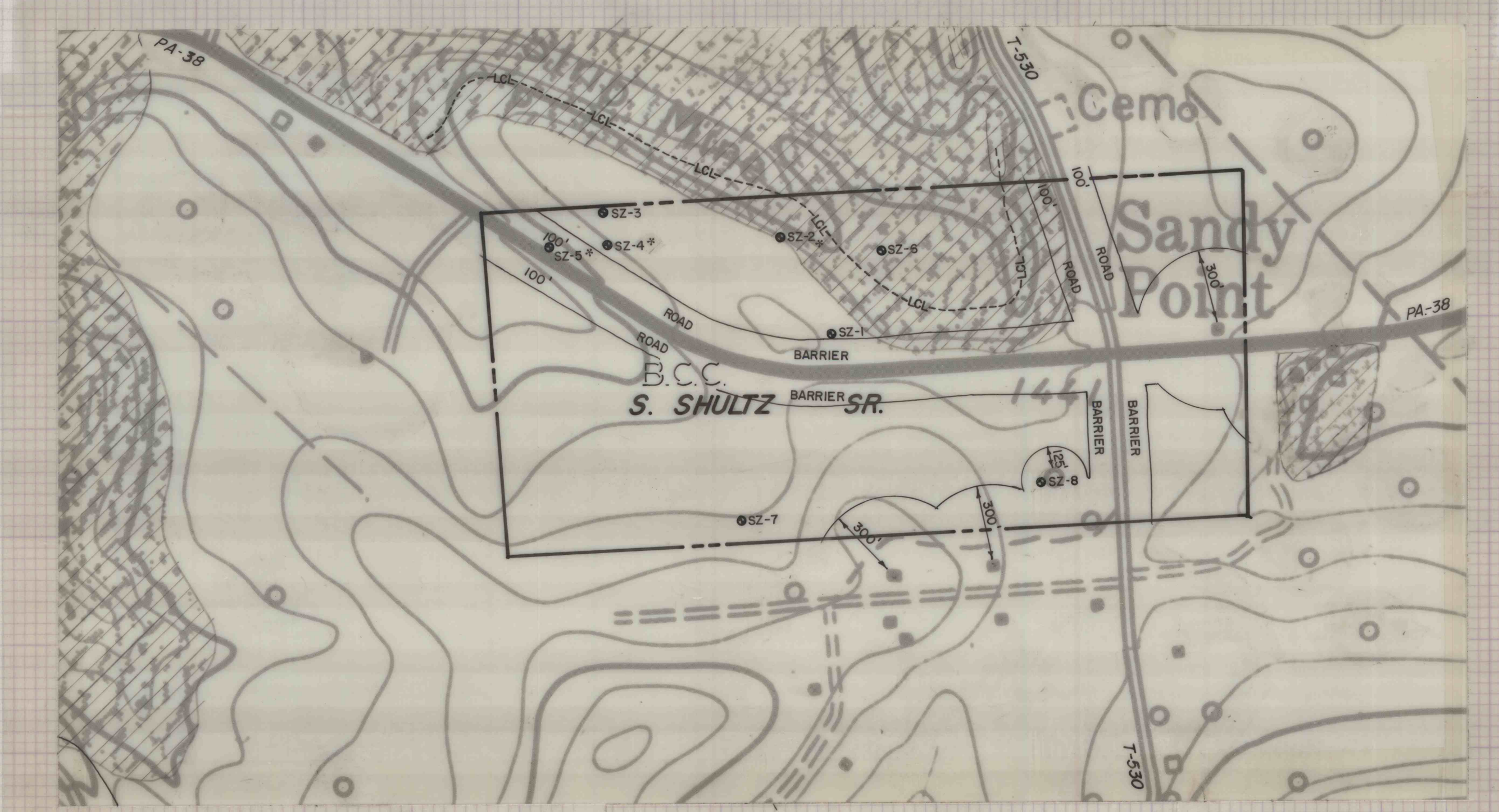


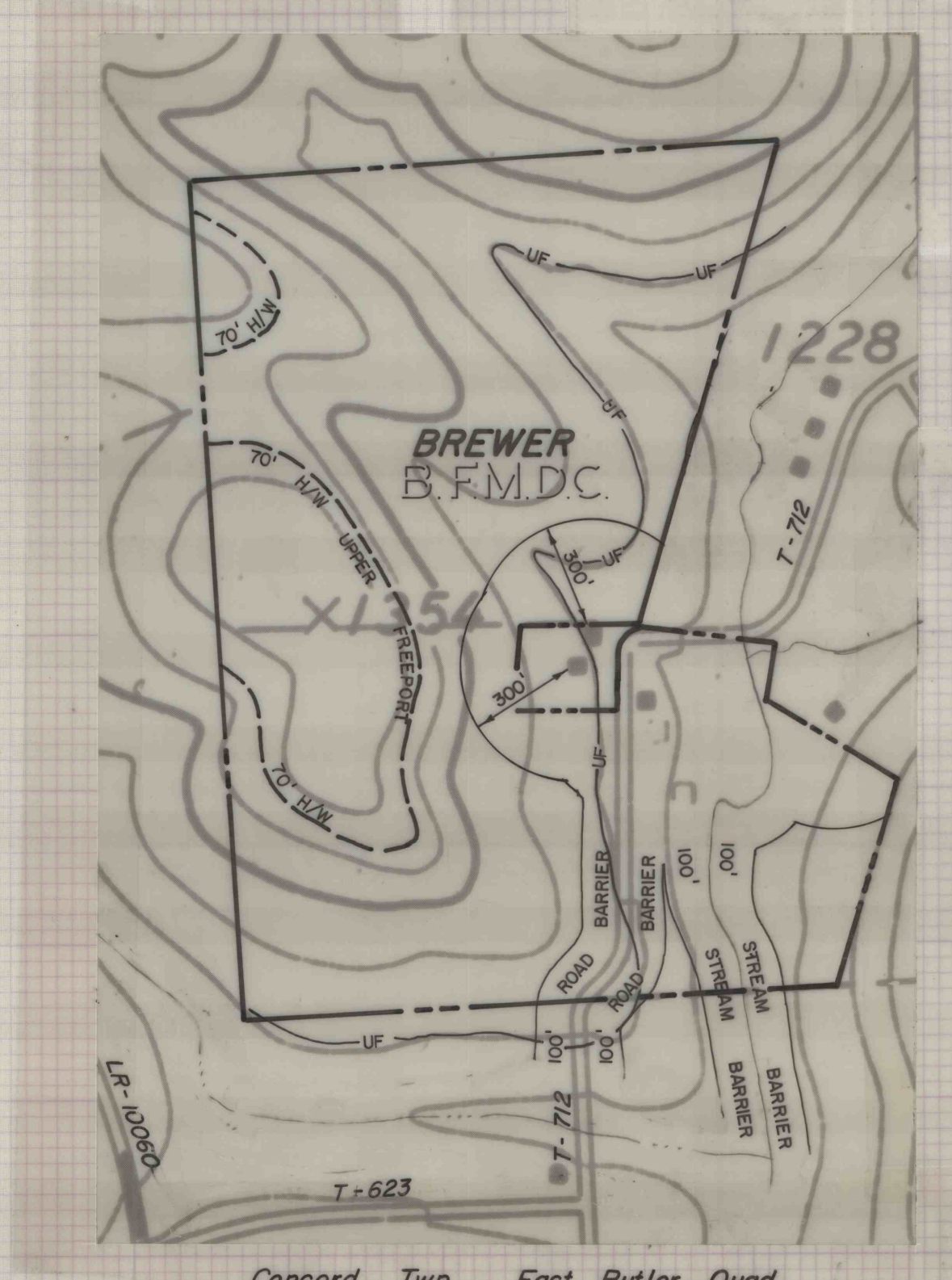
Clay & Concord Twp., Mount Chestnut Quad.



Allegheny Twp., Eau Claire Quad.

ANALYSIS

Hole	Seam	Ash	Sul	BTU
SZ-2	ICL	12.87	5.75	12,398
SZ-4	ICL	7.67	4.20	13,236
SZ-5	UCL	6.85	2.65	13,505



Concord Twp., East Butler Quad.

- LEGEND**
- UF — UPPER FREEPORT OUTCROP
 - LF — LOWER FREEPORT OUTCROP
 - UK — UPPER KITTANNING OUTCROP
 - MK — MIDDLE KITTANNING OUTCROP
 - LK — LOWER KITTANNING OUTCROP
 - UCL — UPPER CLARION OUTCROP
 - LCL — LOWER CLARION OUTCROP
 - UF — COAL AT BASE OF EXISTING HIGHWALL
 - H/W — HIGHWALL LIMITS USED FOR RESERVE
 - — — — — LIMIT OF MINEABLE COAL
 - JB-1 — DRILL HOLE
 - JB-1* — DRILL HOLE WITH ANALYSIS
 - ▨ — STRIP MINED AREA
 - — BARRIER AREA INCLUDED IN RESERVE
- B.F.M.D.C. — PROPERTY CONTROLLED BY BLACK FOX MINING & DEVELOPMENT CORP.
 B.C.C. — PROPERTY CONTROLLED BY BRACKEN CONSTRUCTION COMPANY

**MAP OF
COAL PROPERTIES
SITUATE
BUTLER COUNTY PENNSYLVANIA
FOR
BLUE LINE COAL CO.**

SCALE 1"=400'	GWIN, DOBSON & FOREMAN, INC. CONSULTING ENGINEERS ALTOONA, PENNSYLVANIA	SHEET NO. 7
------------------	---	-----------------------