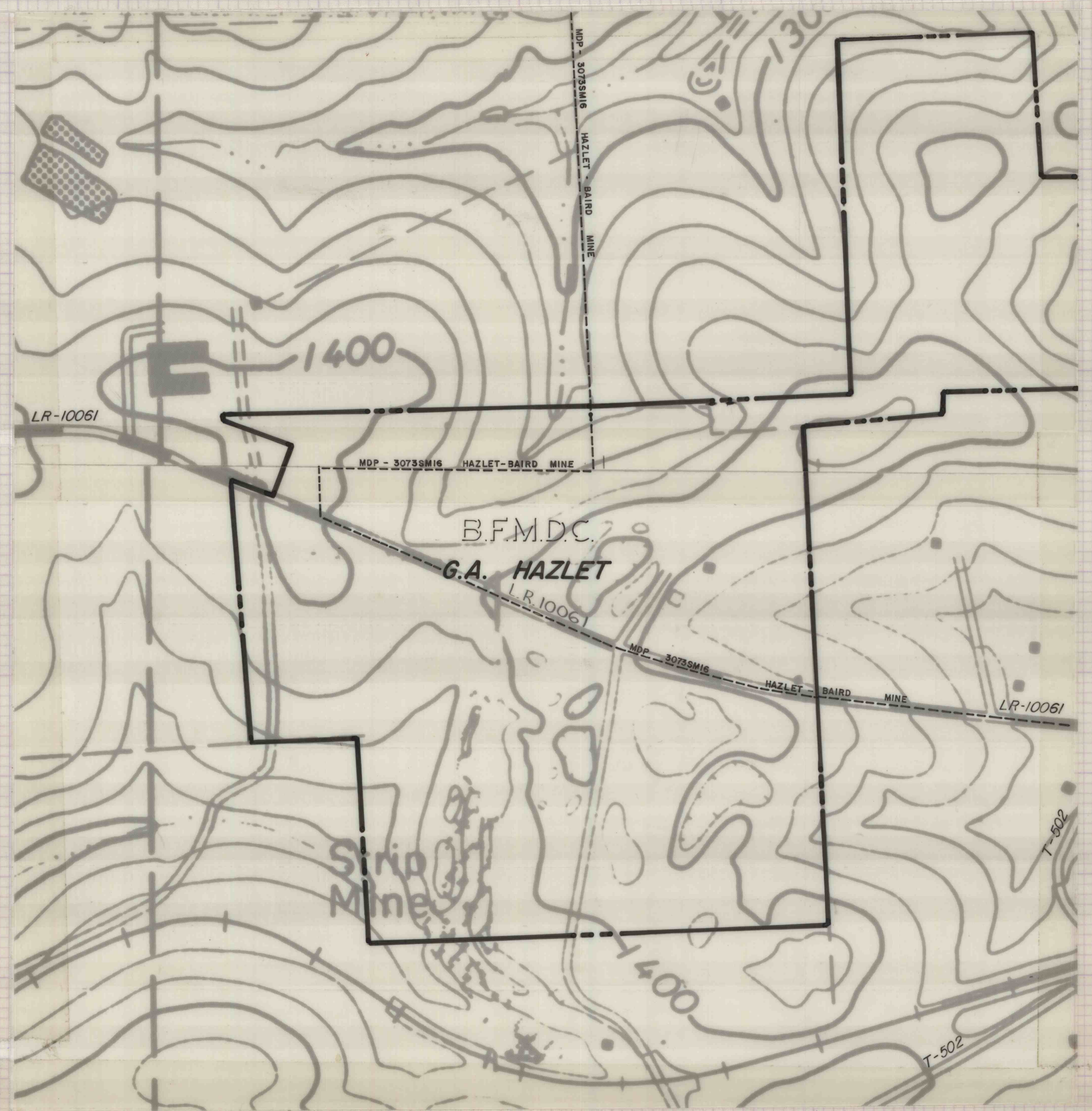


Concord Twp., West Sunbury, Hilliards, Mount Chestnut, & East Butler Quads.



MDP # 3975SM19
 204.75 Ac - Affected Area
 164.05 Ac - UF - LF To be mined

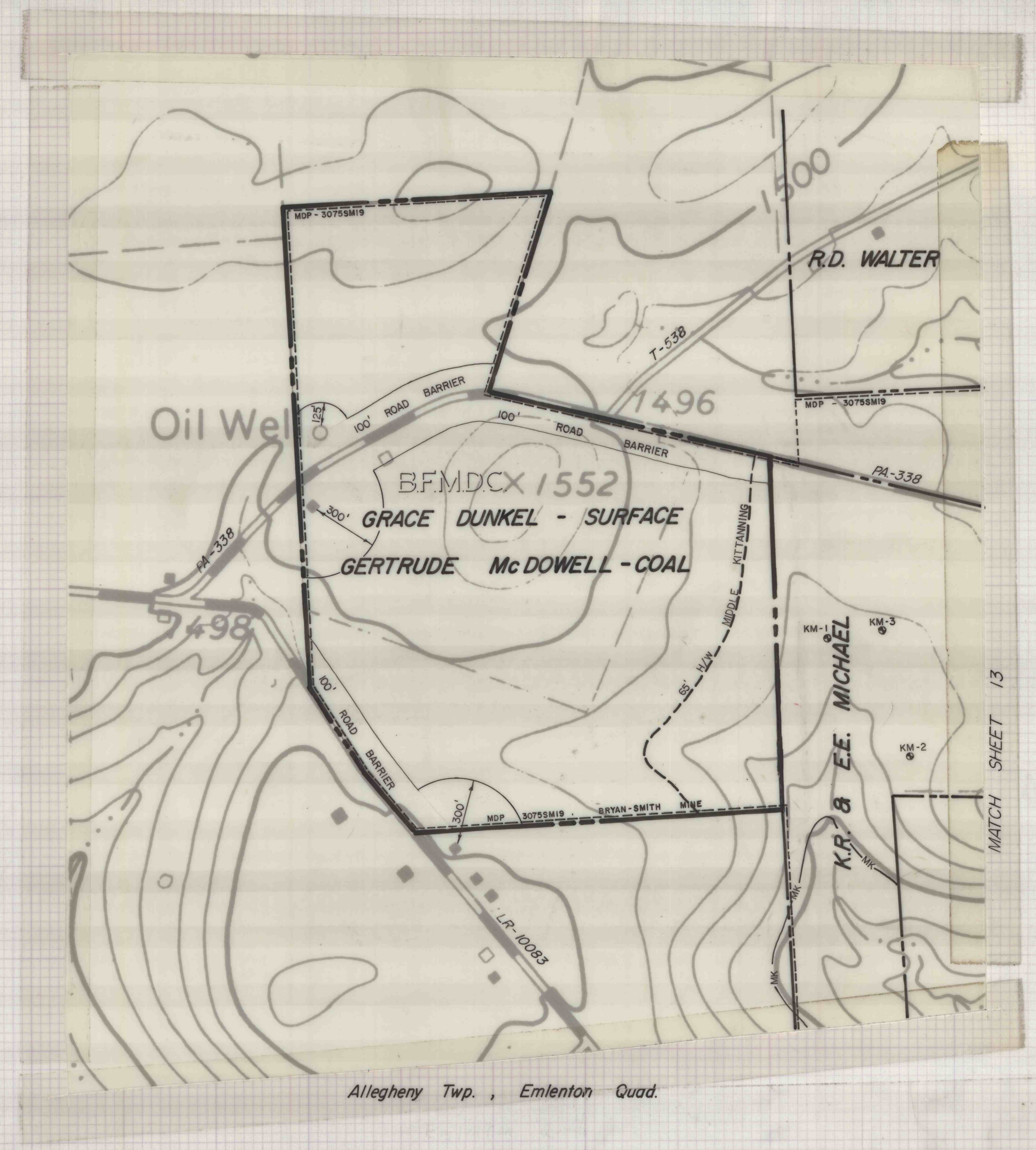
Mining Permits 289-22 = 27.00 Ac
 289-22A1 = 18.25 Ac
 289-22A2 = 7.90 Ac
 289-22A3 = 17.30 Ac

LEGEND

- UF — UPPER FREEPORT OUTCROP
- LF — LOWER FREEPORT OUTCROP
- UK — UPPER KITANNING OUTCROP
- MK — MIDDLE KITANNING OUTCROP
- LK — LOWER KITANNING OUTCROP
- UCL — UPPER CLARION OUTCROP
- LCL — LOWER CLARION OUTCROP
- UF — COAL AT BASE OF EXISTING HIGHWALL
- H/W — HIGHWALL LIMITS USED FOR RESERVE
- — — — — LIMIT OF MINEABLE COAL
- JB-1 DRILL HOLE
- JB-1 DRILL HOLE WITH ANALYSIS
- ▨ STRIP MINED AREA
- BARRIER AREA INCLUDED IN RESERVE
- B.F.M.D.C. PROPERTY CONTROLLED BY BLACK FOX MINING & DEVELOPMENT CORP.
- B.C.C. PROPERTY CONTROLLED BY BRACKEN CONSTRUCTION COMPANY

MAP OF
 COAL PROPERTIES
 SITUATE
 BUTLER COUNTY PENNSYLVANIA
 FOR
BLUE LINE COAL CO.

SCALE	GWIN, DOBSON & FOREMAN, INC. CONSULTING ENGINEERS ALTOONA, PENNSYLVANIA	SHEET NO. 15
-------	---	------------------------



Allegheny Twp., Emlenton Quad.

B-5

MATCH SHEET 13