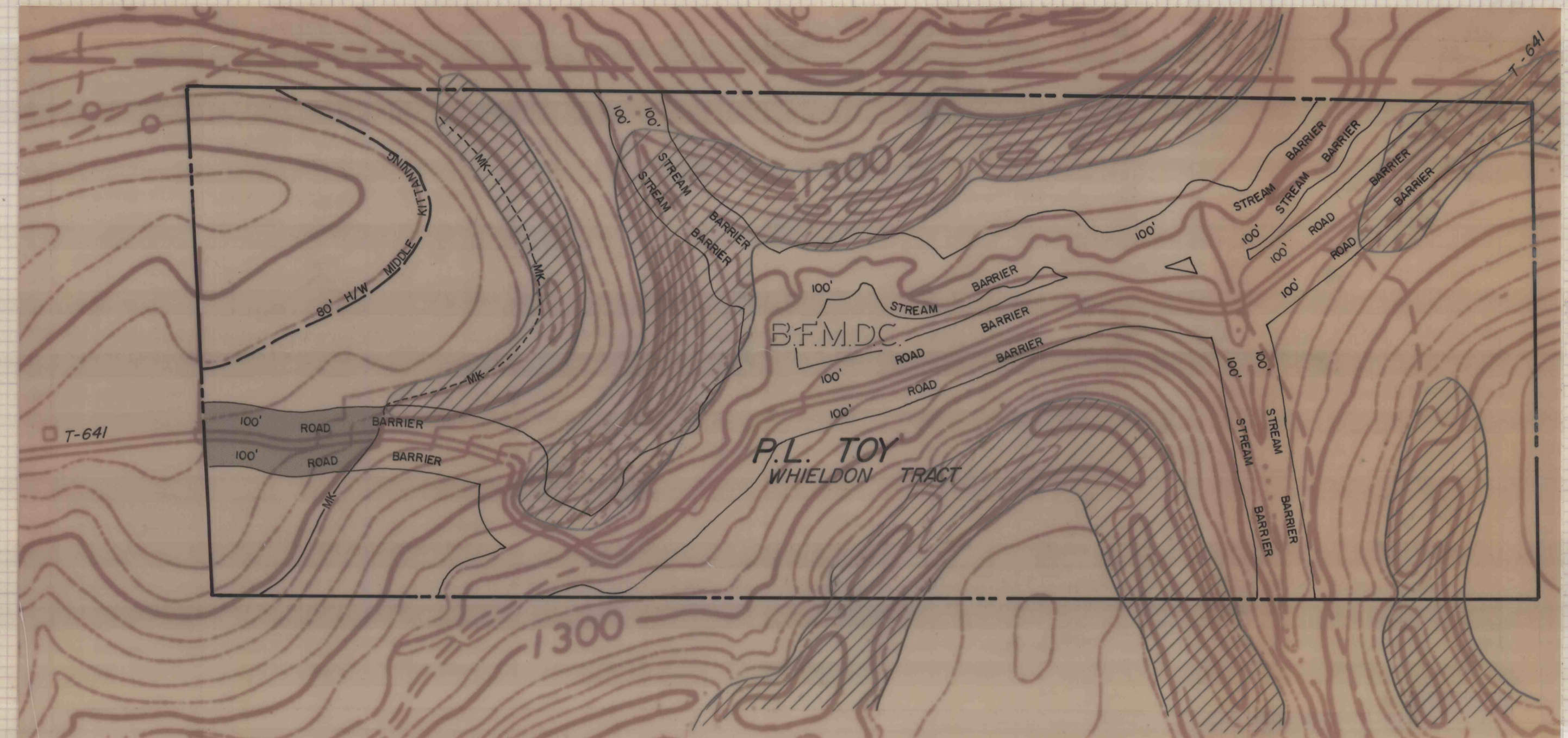


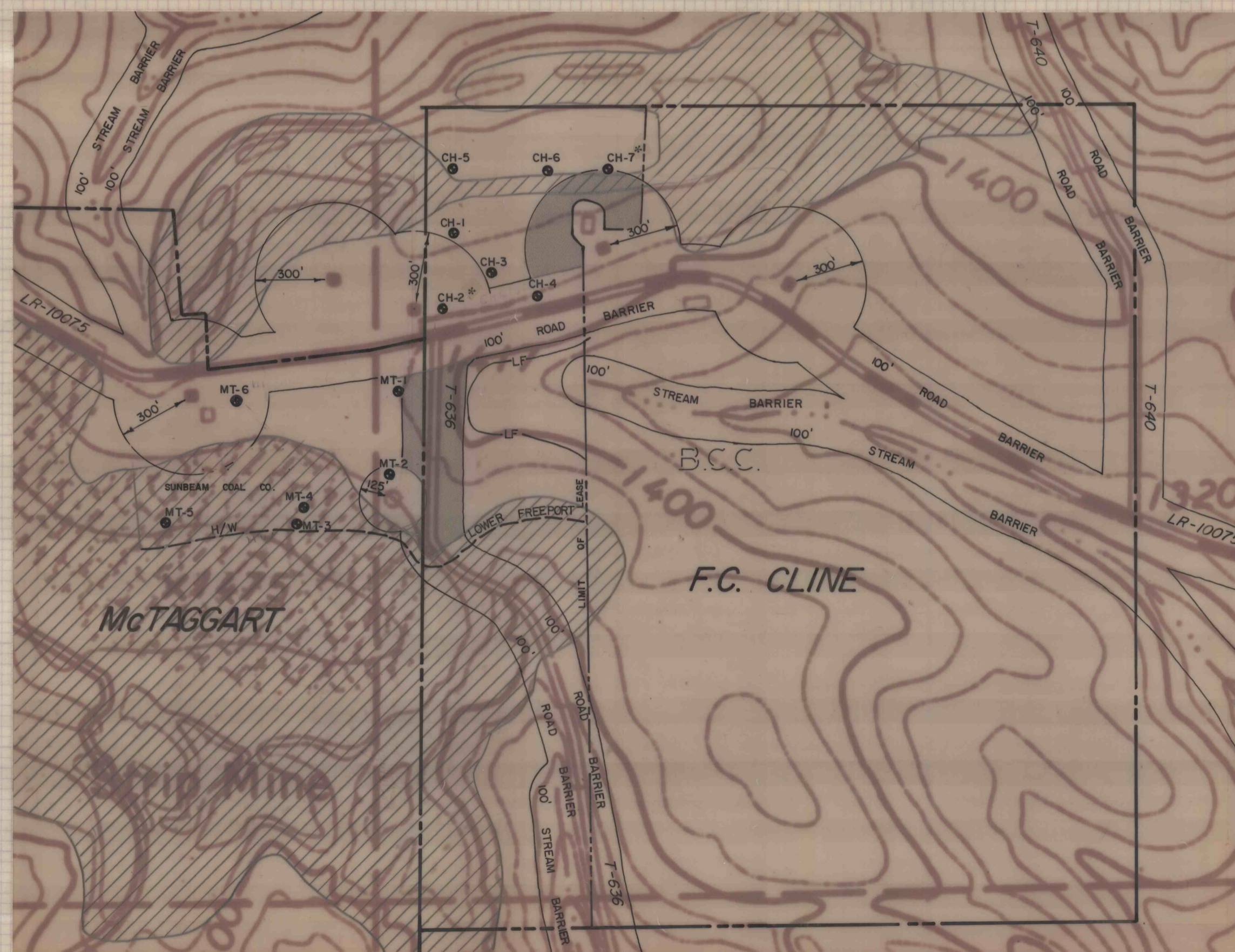
Parker Twp., Hilliards Quad.



Parker Twp., Hilliards Quad.

ANALYSIS

Hole	Seam	Ash	Sul	BTU
CH-2	LF	8.77	3.56	12,856
CH-7	LF	9.53	3.32	12,701



Washington, Parker, & Fairview Twps., Hilliards Quad.

LEGEND

- UF — UPPER FREEPORT OUTCROP
- LF — LOWER FREEPORT OUTCROP
- UK — UPPER KITTANNING OUTCROP
- MK — MIDDLE KITTANNING OUTCROP
- LK — LOWER KITTANNING OUTCROP
- UKL — UPPER CLARION OUTCROP
- LCL — LOWER CLARION OUTCROP
- - - UF - - - COAL AT BASE OF EXISTING HIGHWALL
- - - LF - - - HIGHWALL LIMITS USED FOR RESERVE
- - - LF - - - LIMIT OF MINEABLE COAL
- ⊙ JB-1 DRILL HOLE
- ⊙ JB-1-2 DRILL HOLE WITH ANALYSIS
- ▨ STRIP MINED AREA
- ▩ BARRIER AREA INCLUDED IN RESERVE
- B.F.M.D.C. PROPERTY CONTROLLED BY BLACK FOX MINING & DEVELOPMENT CORP.
- B.C.C. PROPERTY CONTROLLED BY BRACKEN CONSTRUCTION COMPANY

MAP OF
COAL PROPERTIES
SITUATE
BUTLER COUNTY PENNSYLVANIA
FOR
BLUE LINE COAL CO.

SCALE	GWIN, DOBSON & FOREMAN, INC.	SHEET NO.
1"=400'	CONSULTING ENGINEERS ALTOONA, PENNSYLVANIA	12