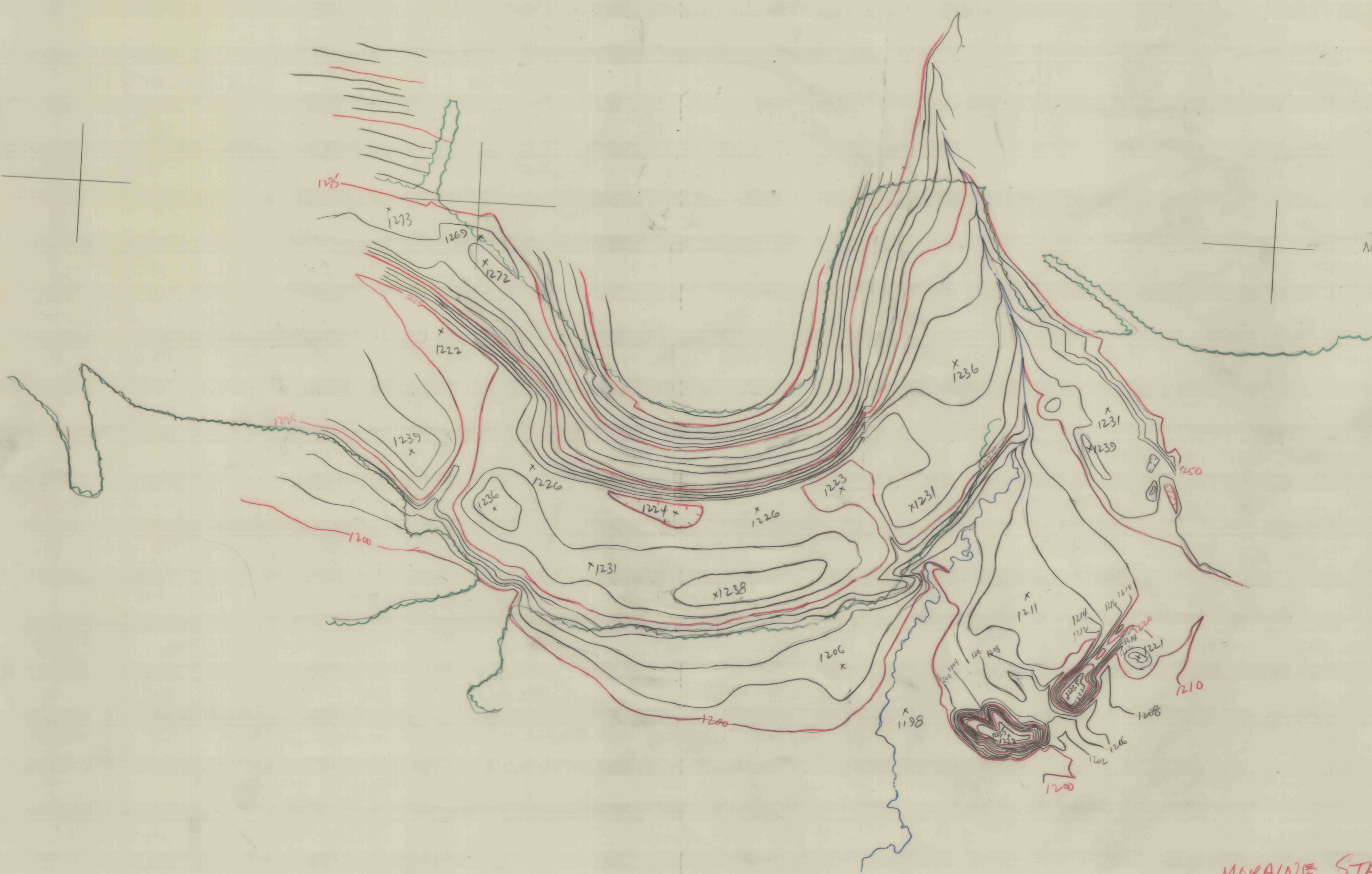


Hand-drawn crosshair grid lines with a red dot at the top-left intersection. A coordinate label "N-607,000" is written to the right of the top-right crosshair.

Hand-drawn crosshair grid lines. A coordinate label "N-606,000" is written to the right of the right-side crosshair.



MORAINIE STATE PARK
67-5-66

Hand-drawn crosshair grid lines. A coordinate label "E-1,379,000" is written below the bottom-left crosshair. A coordinate label "N-604,000" is written to the right of the bottom-right crosshair. A vertical coordinate label "1,381,000" is written to the left of the bottom-right crosshair.