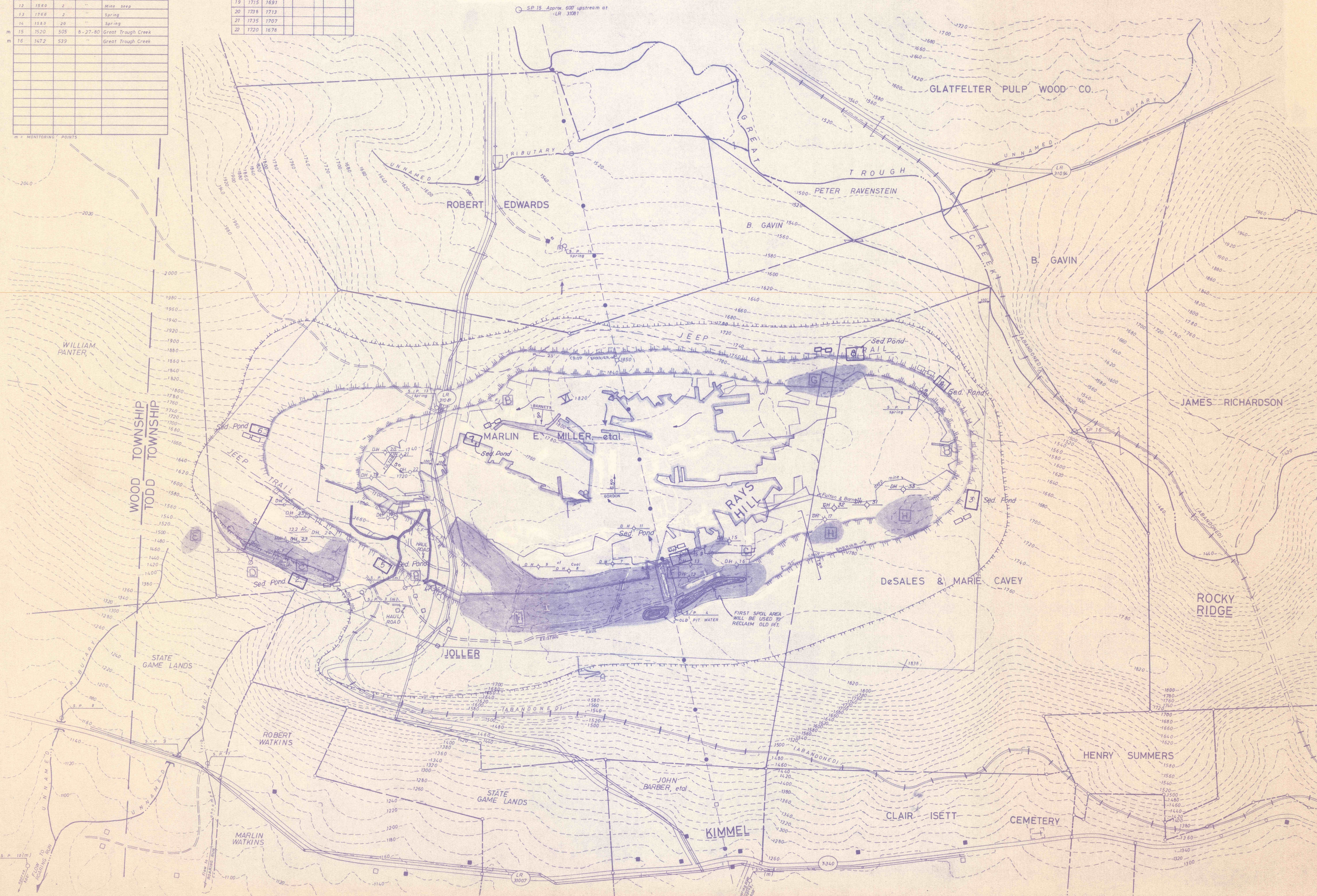


Sp. #	Surf. el.	D. R. M.	Date Col.	Remarks
1	1840	4.1	5-15-80	Mine drainage
2	1640	85		
3	1580	40		
4	1775	N/A		Old pit
5	1700	1	5-12-80	Spring - mine seep
6	1185	400	5-15-80	Rearing Run
7	1175	90		Mine drainage
8	1150	8		Unnamed tributary - Mine drainage
9	1140	7		Unnamed tributary
10	1050	1300	4-17-80	Rearing Run
11	1530	12		Deep mine discharge
12	1560	2		Mine seep
13	1760	2		Spring
14	1588	20		Spring
15	1520	505	8-27-80	Great Trough Creek
16	1672	539		Great Trough Creek

DRILL	HOLE	RECORD			
No.	Start el.	Bottom el.	Fulton el.	in	ft.
7	1786	1735	1684		
8	1776	1727	1680		
9	1786	1748			
11	1788	1880			
12	1783		1745		
13	1778		1722		
14	1776	1752			
15	1779	1749			
16	1781	1758			
17	1780	1765			
18	1671		1631		
19	1715	1691			
20	1738	1713			
21	1735	1707			
22	1720	1678			

DRILL	HOLE	RECORD			
No.	Start el.	Bottom el.	Fulton el.	in	ft.
23	1610		1584	26"	
24	1629		1604	25"	
25	1642		1608	34"	
26	1647		1608	39"	
31	1866	1840	1806		
32	1875	1851	1816		
33	1862	1827	1795		

UNOFFICIAL
FOR STUDY PURPOSES ONLY
DATE: _____



- To be affected 489.6 ac.
- Property line
 - Road
 - Dwelling other
 - Contour line -1500-
 - Perennial-intermittent stream Ephemeral
 - Power line PENNELS
 - Telephone line BELL
 - Power & tele. line
 - Mine drainage line
 - Mining permit line
 - Tree line
 - Fulton outcrop
 - Barnett outcrop
 - Gordon outcrop

- Sediment pond
- Collection pond
- Treatment pond
- Collection ditch
- Groundwater flow
- Sediment trap - energy dissipator
- Previous, affected
- Mine reference
- Deep mine - Outcrop breached ; not breached
- W = Well; S = Spring; PW = Public water; C = Cistern
- Phases indicated by Roman Numerals, (I, II, etc.)
- R/W on all roads is 33 feet unless otherwise indicated.
- Nothing will be disturbed within the R/W unless otherwise stated.
- All augering to be with the strike or dip of the coal seam.
- No augering will be performed to the rise.
- Sediment & Erosion Control Facilities for Topsoil Piles.

- NOTES:
- P.F.T. = Prime farmland topsoil storage
 - I.A., B & C horizons will be stockpiled separately.
 - Prime farmland
 - C.F. = could not locate in field
 - Fulton & Barnett deep mine

Base Mapped By: Penn-Laurel Associates, Inc.

MAP IS FOR **EXHIBIT - V**

L & B COAL COMPANY, INC.
Miller Strip

TODD TOWNSHIP HUNTINGDON COUNTY
SCALE: 1" = 400' DATE: 1-27-81
REV. 3/15/81, 12/18/81, 1/19/82

GWIN, DOBSON & FOREMAN, INC.
CONSULTING ENGINEERS
ALTOONA, PENNSYLVANIA