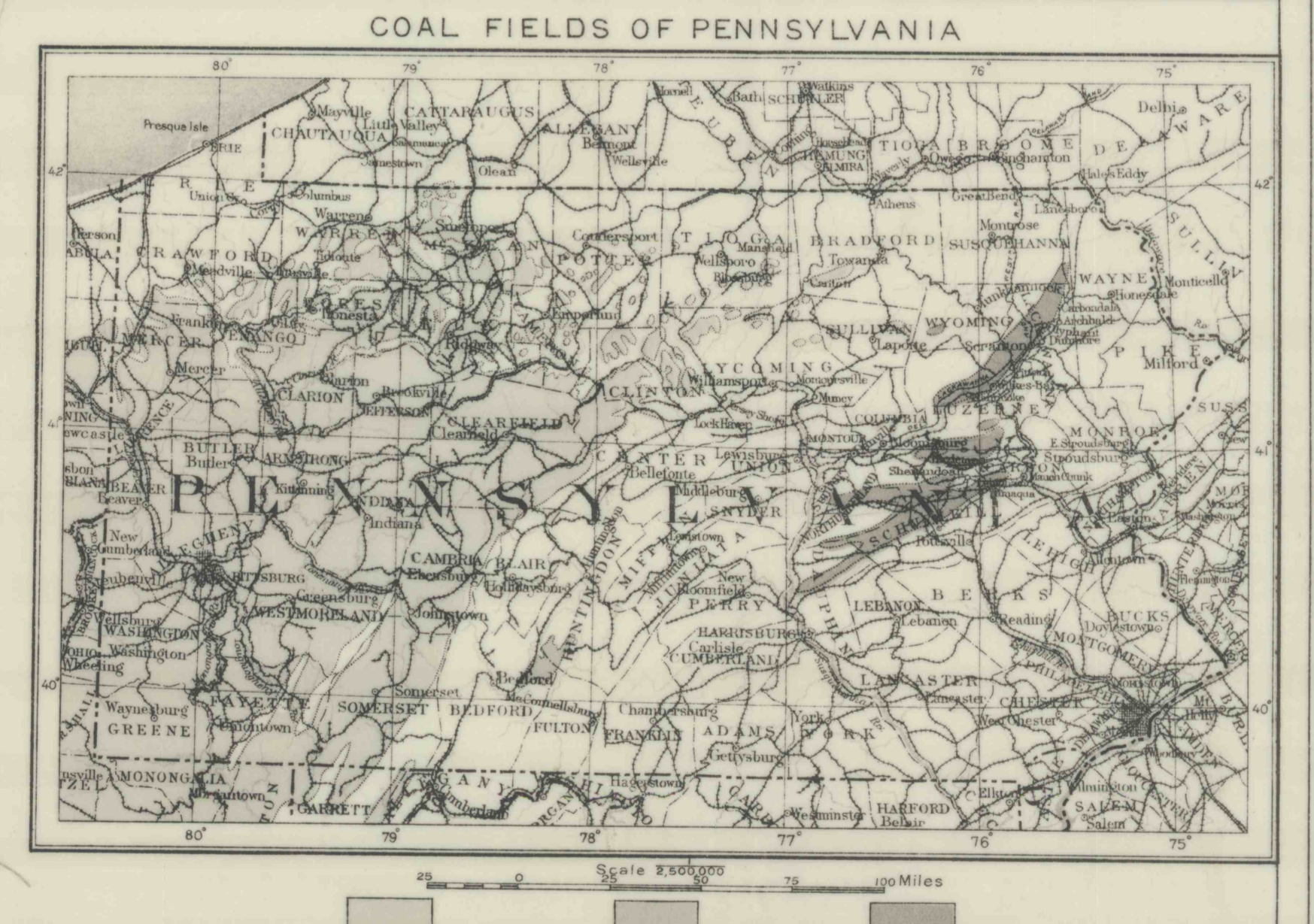
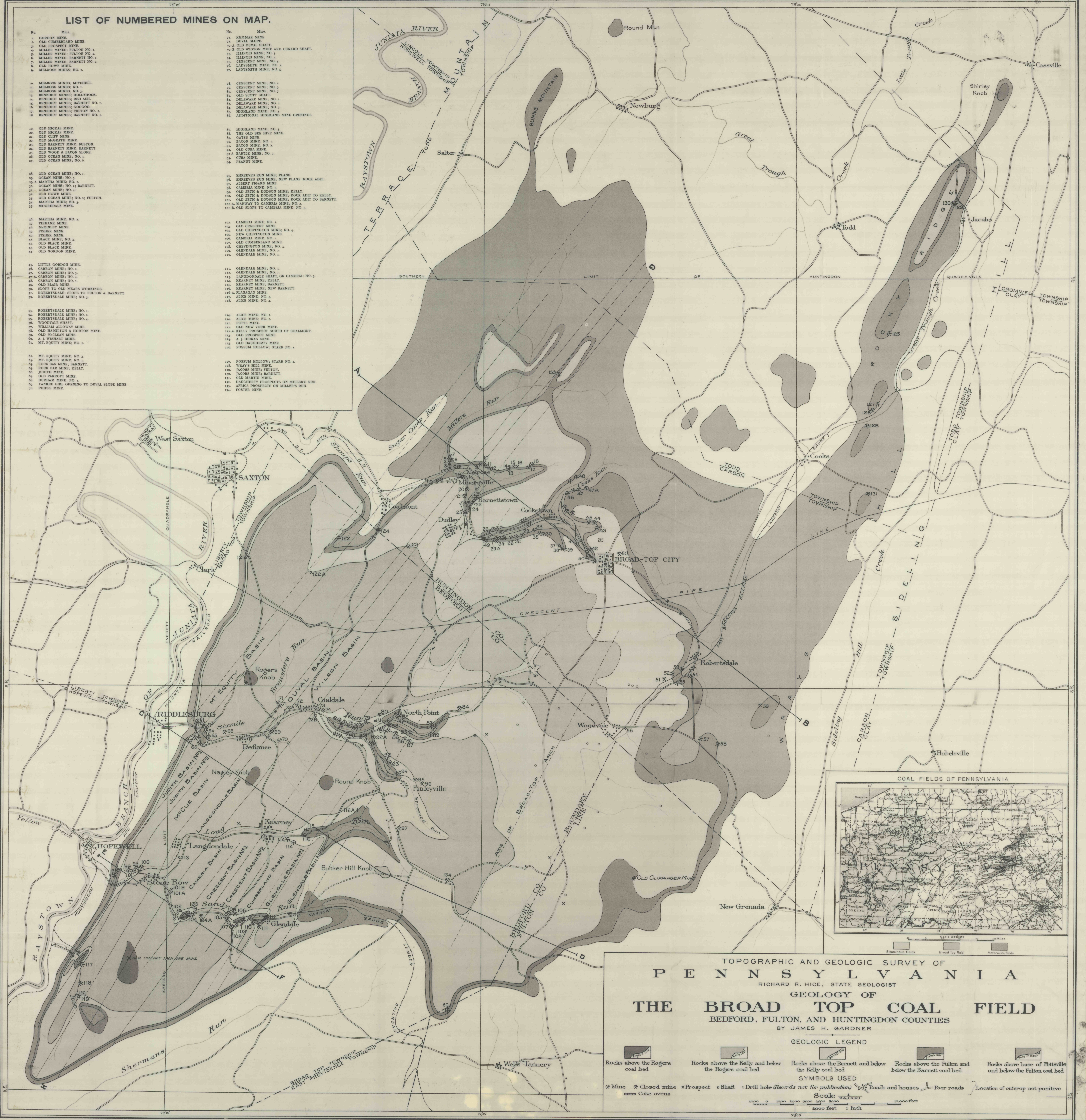


LIST OF NUMBERED MINES ON MAP.

- | | | | |
|--|---|--|-------------------------|
| 1. GORDON MINE. | 21. KEMMAR MINE. | 41. MARSHA MINE, NO. 2. | 61. MARSHA MINE, NO. 3. |
| 2. OLD CUMBERLAND MINE. | 22. DIVAL SLOPE. | 42. TIRHANK MINE. | 62. MARSHLEY MINE. |
| 3. OLD PROSPECT MINE. | 23. OLD DIVAL SHAFT. | 43. MACHLEY MINE. | 63. FISHER MINE. |
| 4. MILLER MINES, FULTON NO. 1. | 24. B. OLD WIGTON MINE AND CUNARD SHAFT. | 44. FISHER MINE. | 64. BLACK MINE, NO. 3. |
| 5. MILLER MINES, FULTON NO. 2. | 25. ILLINOIS MINE, NO. 1. | 45. BLACK MINE, NO. 4. | 65. OLD BLACK MINE. |
| 6. MILLER MINES, BARNETT NO. 1. | 26. ILLINOIS MINE, NO. 2. | 46. OLD BLACK MINE. | 66. OLD GORDON MINE. |
| 7. MILLER MINES, BARNETT NO. 2. | 27. CRESCENT MINE, NO. 1. | 47. SLOPE TO OLD MEARS WORKINGS. | |
| 8. OLD HOWE MINE. | 28. CRESCENT MINE, NO. 2. | 48. ROBERTSDALE SLOPE TO FULTON & BARNETT. | |
| 9. MELROSE MINES, NO. 1. | 29. CRESCENT MINE, NO. 3. | 49. ROBERTSDALE MINE, NO. 1. | |
| 10. MELROSE MINES, NO. 2. | 30. OLD SCOTT SHAFT. | 50. ROBERTSDALE MINE, NO. 2. | |
| 11. MELROSE MINES, MITCHELL. | 31. DELAWARE MINE, NO. 1. | 51. ROBERTSDALE MINE, NO. 3. | |
| 12. MELROSE MINES, HOLLTHOCK. | 32. DELAWARE MINE, NO. 2. | 52. ROBERTSDALE MINE, NO. 4. | |
| 13. BENEDICT MINES, RED ASH. | 33. DELAWARE MINE, NO. 3. | 53. WOODVALE SHAFT. | |
| 14. BENEDICT MINES, BARNETT NO. 1. | 34. HIGHLAND MINE, NO. 1. | 54. WILLIAM ALLOWAY MINE. | |
| 15. BENEDICT MINES, GOGGON. | 35. HIGHLAND MINE, NO. 2. | 55. OLD HAMILTON & HORTON MINE. | |
| 16. BENEDICT MINES, FULTON NO. 1. | 36. HIGHLAND MINE, NO. 3. | 56. OLD MCGILAN MINE. | |
| 17. BENEDICT MINES, BARNETT NO. 2. | 37. ADDITIONAL HIGHLAND MINE OPENINGS. | 57. A. J. WISHART MINE. | |
| 18. BENEDICT MINES, BARNETT NO. 3. | | 58. MT. EQUITY MINE, NO. 1. | |
| 19. OLD HICKAS MINE. | | 59. MT. EQUITY MINE, NO. 2. | |
| 20. OLD HICKAS MINE. | | 60. ROCK BAR MINE, BARNETT. | |
| 38. OLD OCEAN MINE, NO. 1. | 69. SHREVEYS RUN MINE, PLANE. | 67. ROCK BAR MINE, KELLY. | |
| 39. OCEAN MINE, NO. 2. | 70. SHREVEYS RUN MINE, NEW PLANE ROCK ADIT. | 68. JUTHE MINE. | |
| 40. MARSHA MINE, NO. 1. | 71. ALBERT TIGARD MINE. | 69. OLD PARROTT MINE. | |
| 41. OCEAN MINE, NO. 3. | 72. CAMBRIA MINE, NO. 1. | 70. DURHAM MINE, NO. 1. | |
| 42. OCEAN MINE, NO. 4. | 73. OLD CRESCENT MINE. | 71. YANKEE GIRL OPENING TO DUVAL SLOPE MINE. | |
| 43. OLD HOWE MINE. | 74. CAMBRIA MINE, NO. 2. | 72. PIPPS MINE. | |
| 44. OCEAN MINE, NO. 5. | 75. NEW CHEVINGTON MINE, NO. 4. | | |
| 45. MARSHA MINE, NO. 3. | 76. CAMBRIA MINE, NO. 3. | | |
| 46. OLD HOWE MINE. | 77. OLD CRESCENT MINE. | | |
| 47. OCEAN MINE, NO. 6. | 78. NEW CHEVINGTON MINE, NO. 1. | | |
| 48. OCEAN MINE, NO. 7. | 79. CAMBRIA MINE, NO. 4. | | |
| 49. SLOPE TO OLD MEARS WORKINGS. | 80. OLD ZETH & DOBSON MINE, KELLY. | | |
| 50. ROBERTSDALE SLOPE TO FULTON & BARNETT. | 81. OLD ZETH & DOBSON MINE, ROCK ADIT TO KELLY. | | |
| 51. ROBERTSDALE MINE, NO. 1. | 82. OLD ZETH & DOBSON MINE, ROCK ADIT TO BARNETT. | | |
| 52. ROBERTSDALE MINE, NO. 2. | 83. A. MANWAY TO CAMBRIA MINE, NO. 2. | | |
| 53. ROBERTSDALE MINE, NO. 3. | 84. OLD SLOPE TO CAMBRIA MINE, NO. 3. | | |
| 54. ROBERTSDALE MINE, NO. 4. | | | |
| 55. WOODVALE SHAFT. | 102. CAMBRIA MINE, NO. 2. | | |
| 56. WILLIAM ALLOWAY MINE. | 103. OLD CRESCENT MINE. | | |
| 57. OLD HAMILTON & HORTON MINE. | 104. OLD CHEVINGTON MINE, NO. 4. | | |
| 58. OLD MCGILAN MINE. | 105. NEW CHEVINGTON MINE, NO. 1. | | |
| 59. A. J. WISHART MINE. | 106. CAMBRIA MINE, NO. 1. | | |
| 60. MT. EQUITY MINE, NO. 1. | 107. OLD CUMBERLAND MINE. | | |
| 61. MT. EQUITY MINE, NO. 2. | 108. CHEVINGTON MINE, NO. 3. | | |
| 62. ROCK BAR MINE, BARNETT. | 109. GLENDALE MINE, NO. 2. | | |
| 63. ROCK BAR MINE, KELLY. | 110. GLENDALE MINE, NO. 3. | | |
| 64. JUTHE MINE. | 111. GLENDALE MINE, NO. 4. | | |
| 65. OLD PARROTT MINE. | 112. GLENDALE MINE, NO. 5. | | |
| 66. DURHAM MINE, NO. 1. | 113. GLENDALE MINE, NO. 6. | | |
| 67. YANKEE GIRL OPENING TO DUVAL SLOPE MINE. | 114. LANGDONDALE SHAFT, OR CAMBRIA, NO. 3. | | |
| 68. PIPPS MINE. | 115. KEARNEY MINE, KELLY. | | |
| | 116. KEARNEY MINE, BARNETT. | | |
| | 117. KEARNEY MINE, NEW BARNETT. | | |
| | 118. LANGAGAR MINE. | | |
| | 119. ALICE MINE, NO. 1. | | |
| | 120. ALICE MINE, NO. 2. | | |
| | 121. PUTTS MINE. | | |
| | 122. OLD NEW YORK MINE. | | |
| | 123. KELLY PROSPECT SOUTH OF COALMONT. | | |
| | 124. OLD PROSPECT MINE. | | |
| | 125. A. J. HICKAS MINE. | | |
| | 126. OLD DAGOHERTY MINE. | | |
| | 127. POSSUM HOLLOW, STARR NO. 1. | | |
| | 128. POSSUM HOLLOW, STARR NO. 2. | | |
| | 129. WHAT'S HILL MINE. | | |
| | 130. JACOBS MINE, FULTON. | | |
| | 131. JACOBS MINE, BARNETT. | | |
| | 132. OLD MARTIN MINE. | | |
| | 133. DAGOHERTY PROSPECTS ON MILLER'S RUN. | | |
| | 134. AFRICA PROSPECTS OF MILLER'S RUN. | | |
| | 135. FOSTER MINE. | | |



TOPOGRAPHIC AND GEOLOGIC SURVEY OF
PENNSYLVANIA
 RICHARD R. HICE, STATE GEOLOGIST
GEOLOGY OF
THE BROAD TOP COAL FIELD
 BEDFORD, FULTON, AND HUNTINGDON COUNTIES
 BY JAMES H. GARDNER

GEOLOGIC LEGEND
 Rocks above the Rogers coal bed Rocks above the Kelly and below the Rogers coal bed Rocks above the Barnett and below the Kelly coal bed Rocks above the Fulton and below the Barnett coal bed Rocks above base of Pittsville and below the Fulton coal bed

SYMBOLS USED
 ○ Mine ⊗ Closed mine × Prospect † Shaft ◊ Drill hole (Records not for publication) — Roads and houses - - - Poor roads □ Location of outcrop not positive

Scale 24,000
 0 1000 2000 3000 4000 5000 6000 feet
 2000 feet 1 inch