

Abandoned workings from Foreman Mine
Traced from blue print of Masand Surveys by W. A. Sullivan, Engr.

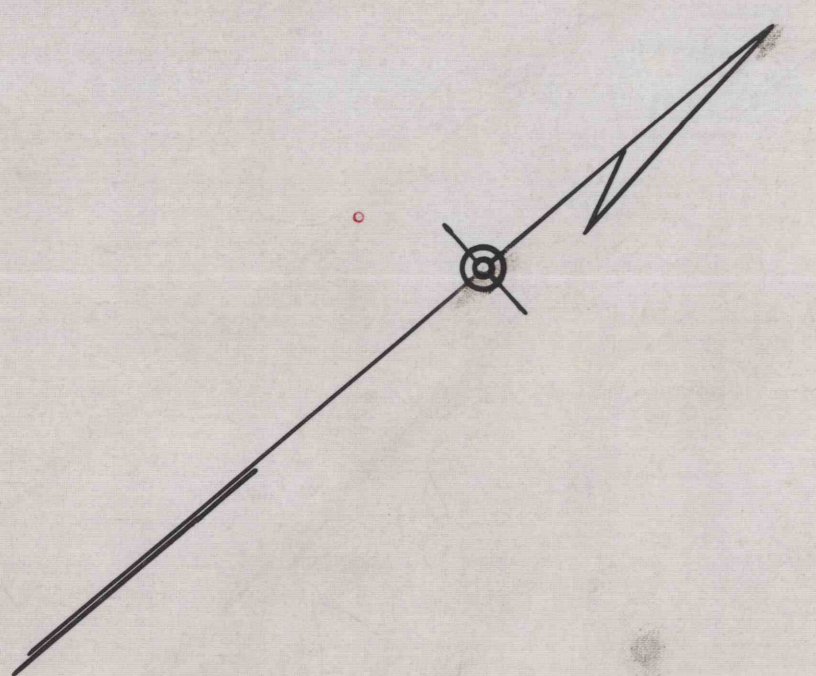
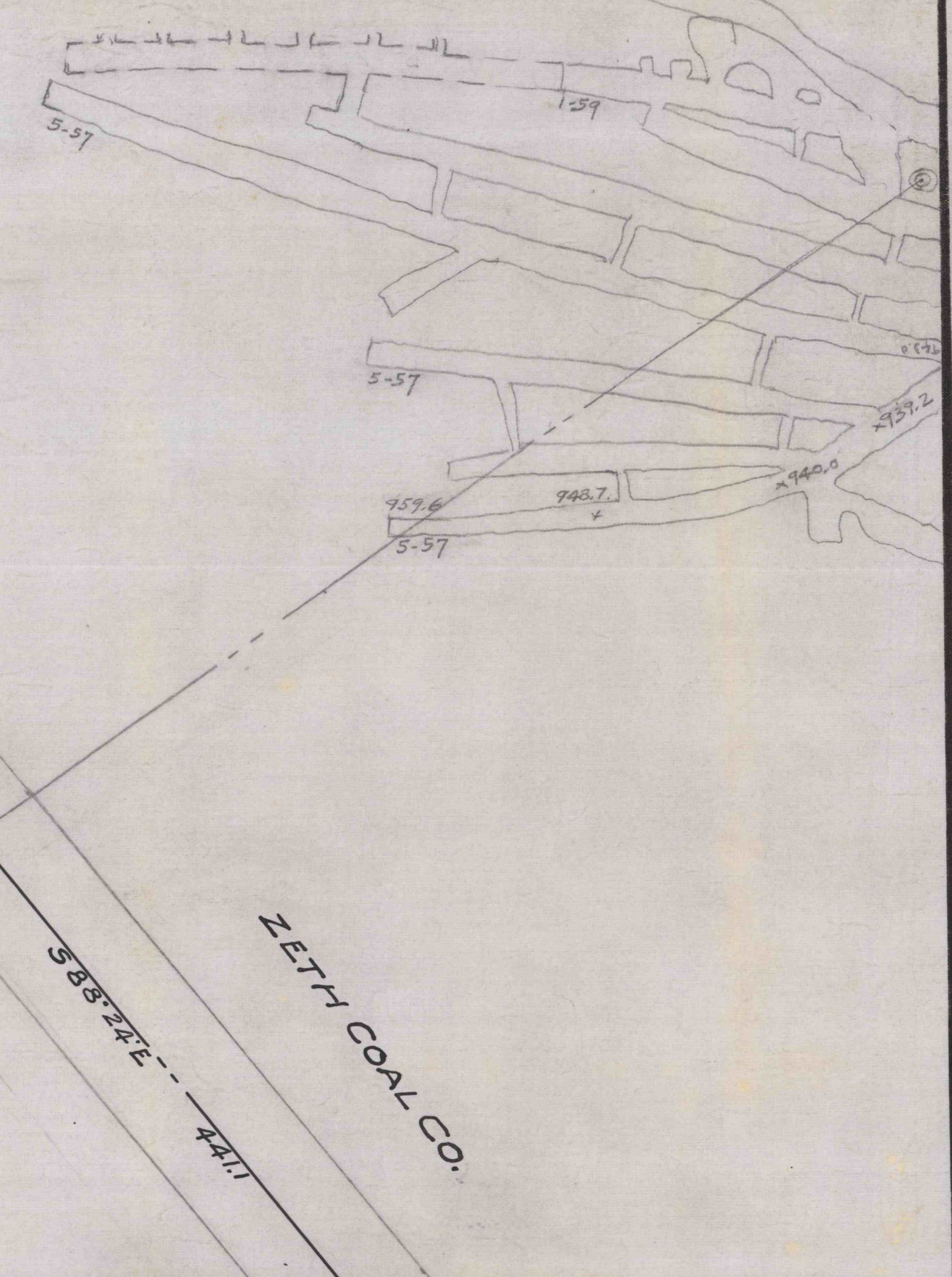
40' BARRIER PILLAR
N 40° 26' E

FOREMAN-WHITE COAL CO.

2310.6
50' BARRIER



Approx. location of workings from the Douglas Mine operated by Horton & Leighty. These workings were traced from a blue print furnished by G.P. Foreman, dated May-1937 and Jan. 1959. N.B. A survey, including elevations should be made connecting this mine with Harriet No. 5 Mine. (G.C.A. 4-22-60)



HARRIET MINES

OWNED BY
J. H. SIMON & SON

BROADTOP TOWNSHIP - BEDFORD COUNTY

Scale: 1" = 100'

(KELLY SEAM)

Guy C. Askey, Min. Engr.
Bedford, Pa.

OPERATORS

- No. 3 MINE - J. L. TENLEY (completed 1959)
- No. 4 MINE - JOSEPH ZELANKO & SON
- No. 5 MINE - ARK COAL CO. (Completed 1963)

Revised