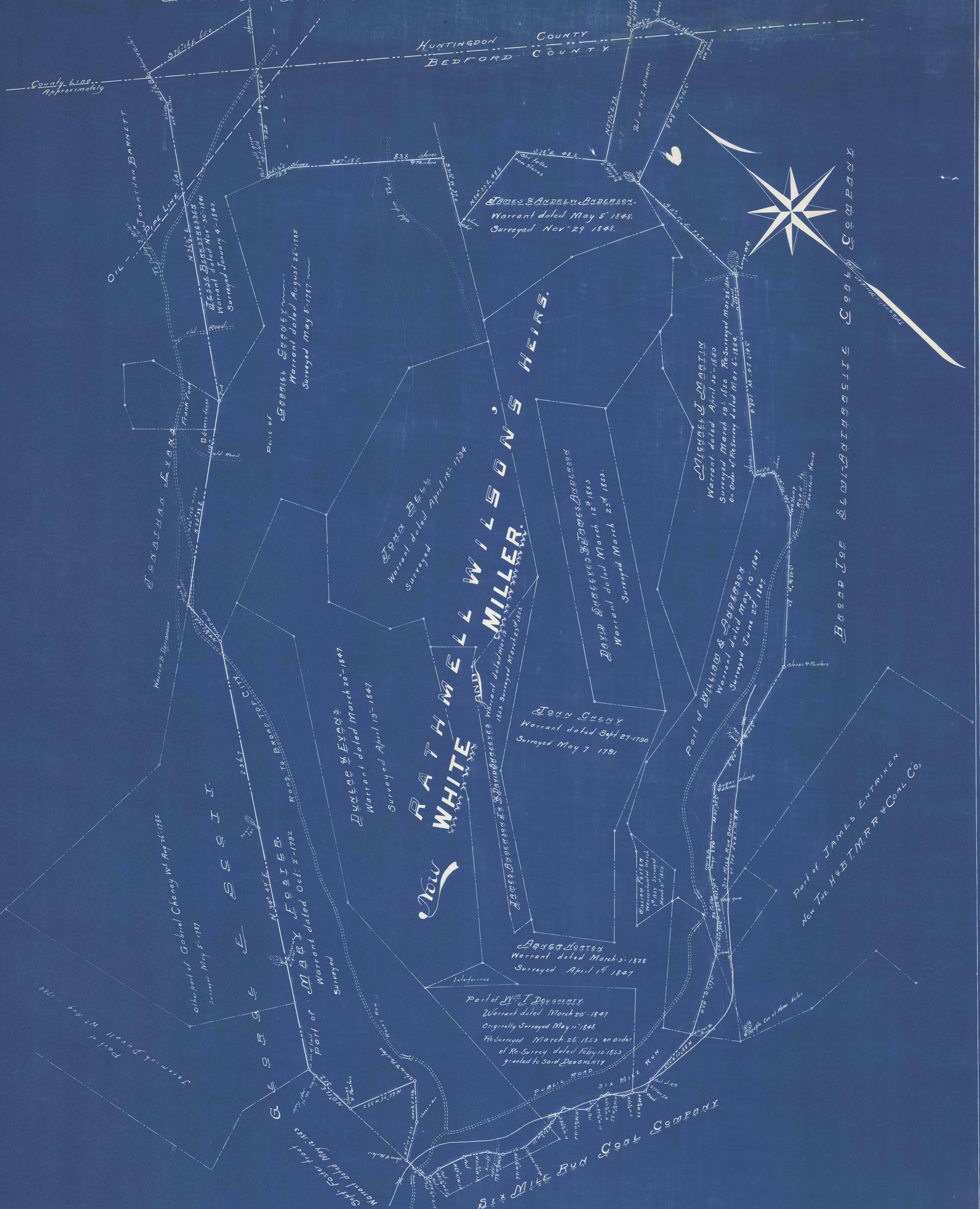


WOOD AND BACON

HUNTINGDON COUNTY
BEDFORD COUNTY



**WHITE AND MILLER'S
COAL LANDS.**

14 TRACTS AND PARTS OF TRACTS
IN

BROAD TOP TOWNSHIP BEDFORD COUNTY,

(EXCEPT A SMALL PART IN HUNTINGDON COUNTY)

LINES EXAMINED & RE-MARKED IN JULY 1902.

SCALE 20 RODS TO ONE INCH.

G. W. Curard.