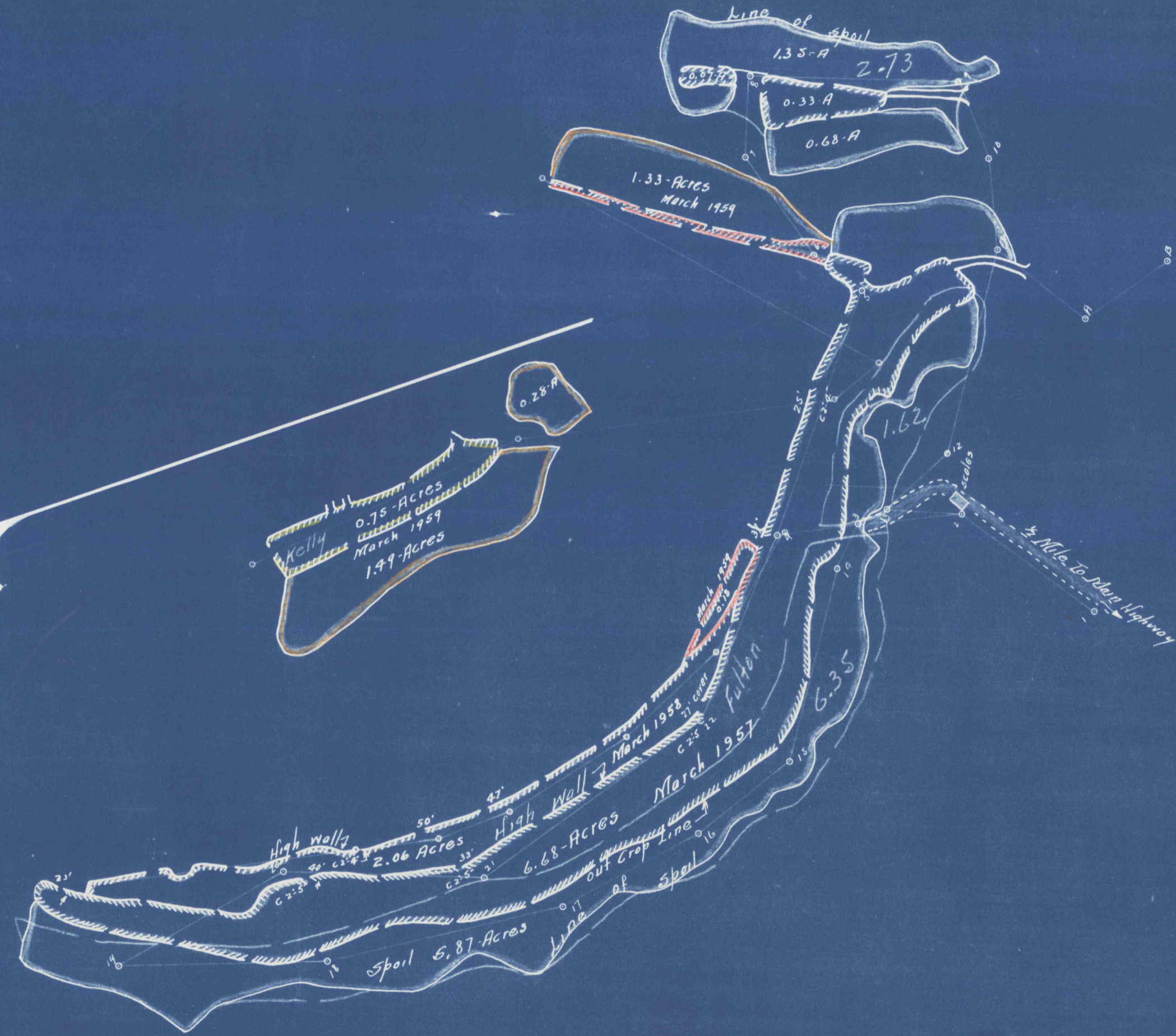


Rockhill Coal Company

William Greenland

Chas. Crottsley and Son.



March 1<sup>st</sup> 59 Area Effectd 4.18 Acres  
 March 1<sup>st</sup> 58 Area Effectd 2.06 Acres  
 March 1<sup>st</sup> 57 Area Effectd 14.98 Acres

Map Showing Strippings of Chas Crottsley and Son. Situated in Todd Twp. Huntingdon County Penna. March 1957  
 1" = 200' E. Corrie Engr. Robertsdale Pa.

