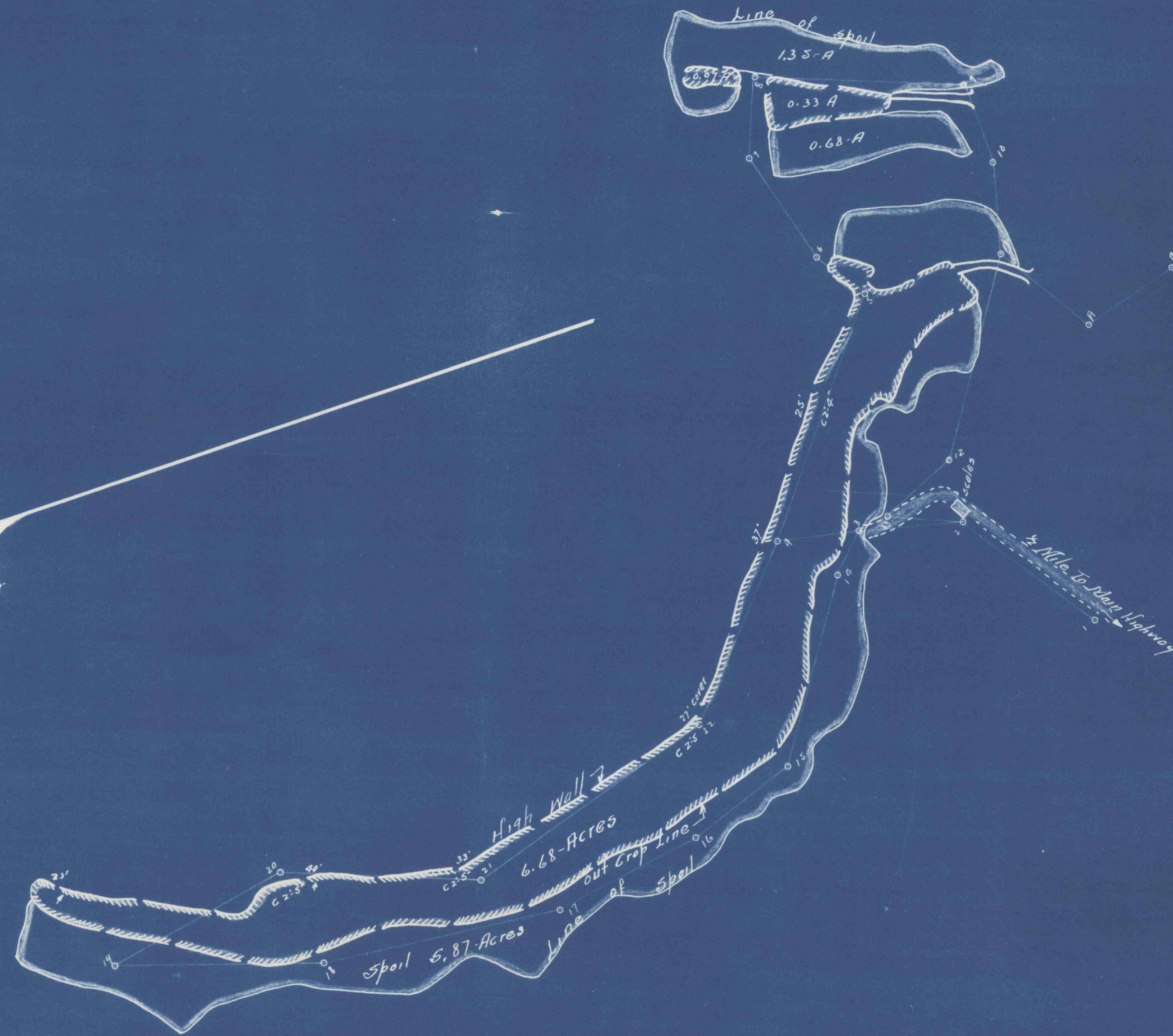


Rockhill Coal Company

William Greenland

Chas. Crotzley & Son.



March 1st 57 Area Effected 14.98 Acres

Map Showing Strippings of Chas. Crotzley & Son. Situated in Todd Twp. Huntingdon County Penna. March 1957
1" = 200' E. Corrie Engr. Robertsdale Pa.

