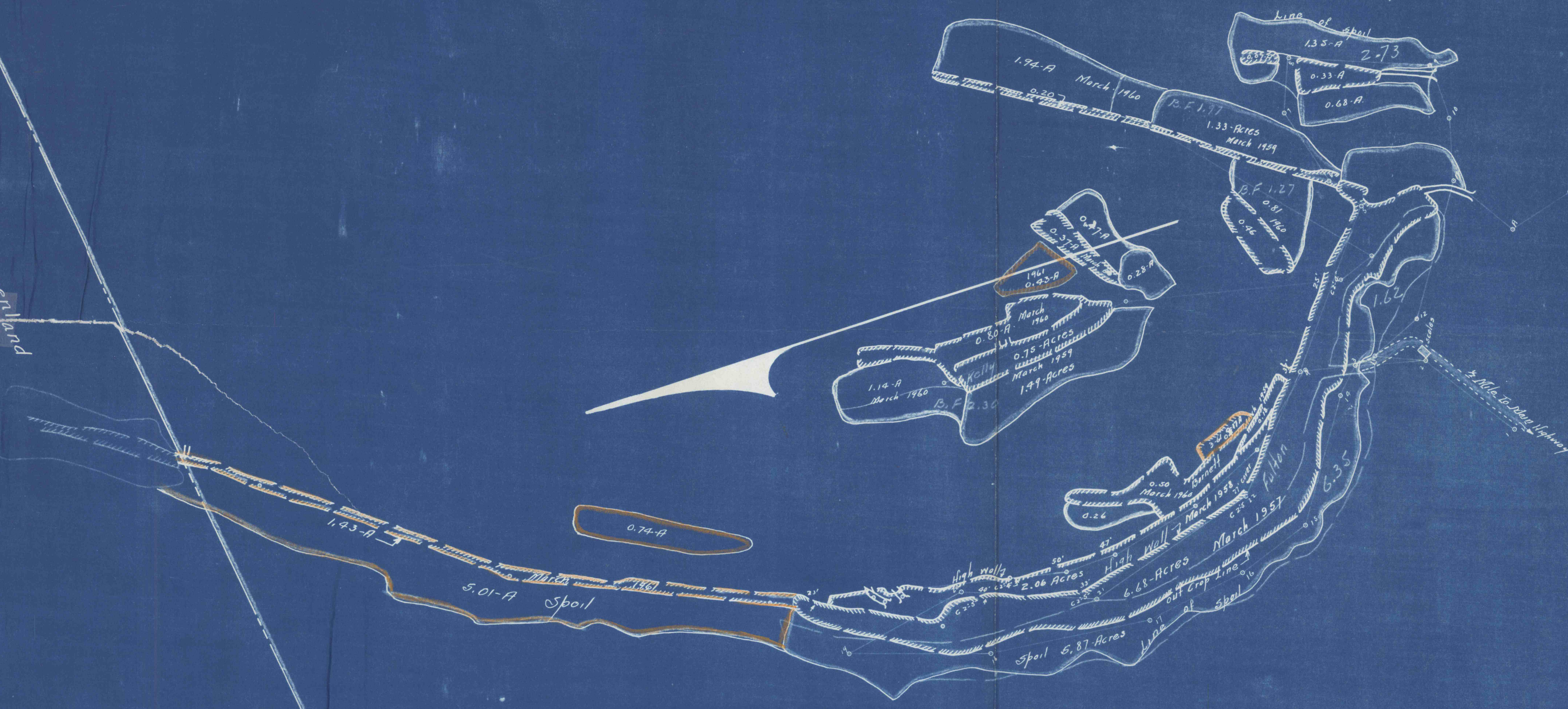


Rockhill Coal Company

William Greenlund

Chas. Crotsley & Son.



March 1<sup>st</sup> 61 Area Effected 7.04 Acres  
 March 1<sup>st</sup> 60 Area Effected 6.95 Acres  
 March 1<sup>st</sup> 59 Area Effected 4.18 Acres  
 March 1<sup>st</sup> 58 Area Effected 2.06 Acres  
 March 1<sup>st</sup> 57 Area Effected 14.98 Acres

Map Showing Stripplings of Chas. Crotsley & Son. Situated in Todd Tap, Huntingdon County, Penna. March 1<sup>st</sup> 57  
 1" = 200' E. Corrie, Bert