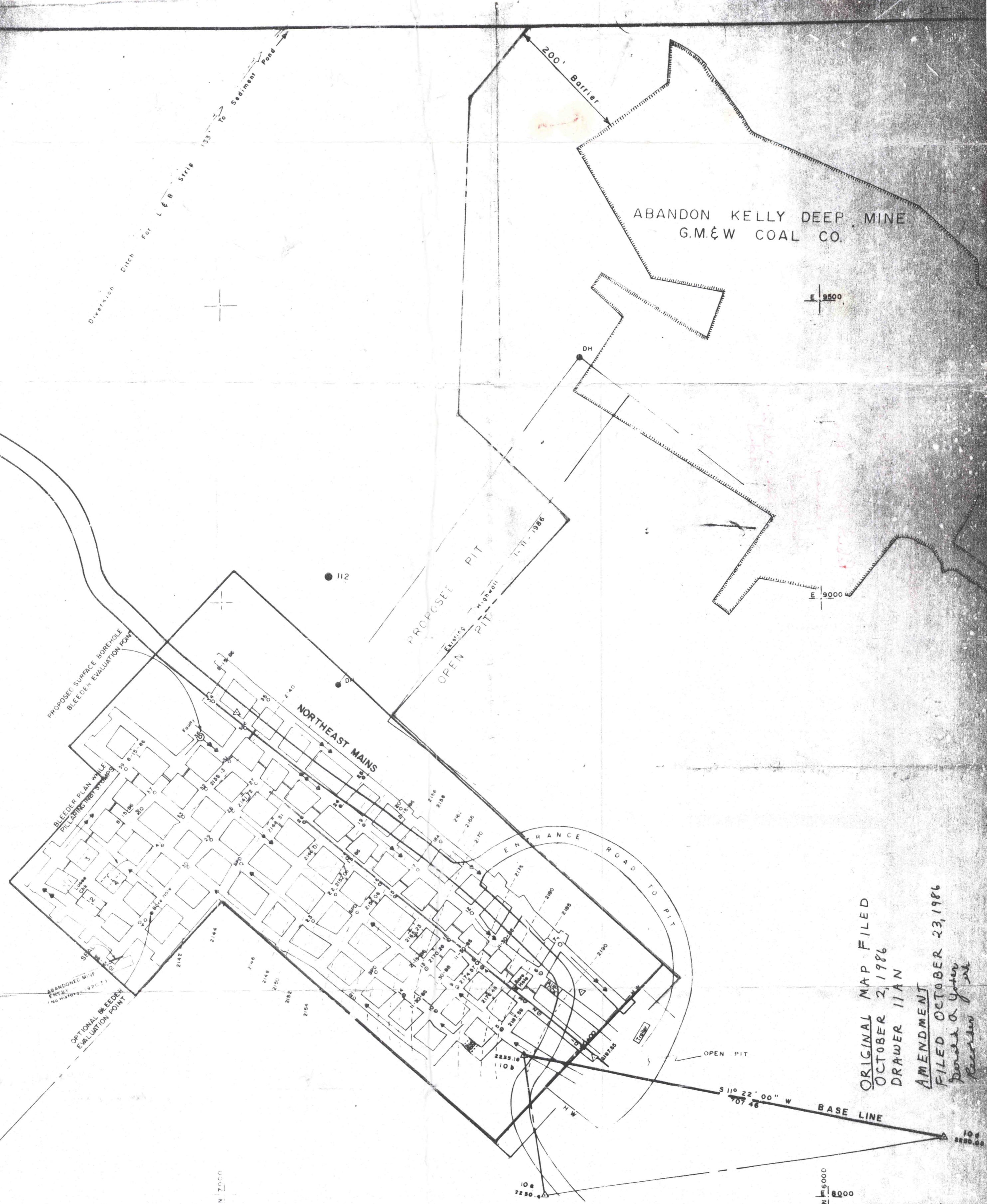
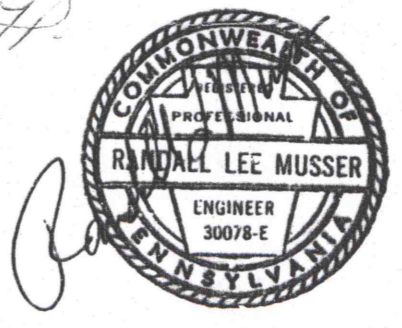
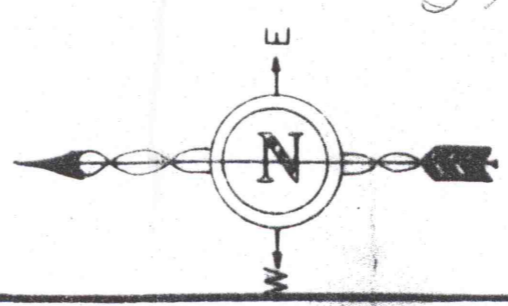
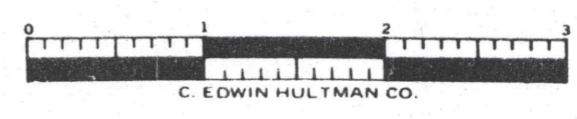


PLAT BOOK 4 DRAWER 11 AP
PAGE 49A



ORIGINAL MAP FILED
OCTOBER 2, 1986
DRAWER 11 AN
AMENDMENT
FILED OCTOBER 23, 1986
Randal Lee Musser

Corner Stone



SUBSIDENCE AMENDMENT
 Subsidence Permit No. 0584301
 Mine Subsidence Exhibit "B"
Zelanko Coal Company
 TOWERS MINE — KELLY SEAM
 Broad Top Township Bedford County, Pa.
 Scale 1" = 100' Date: OCT 14 1986
 Drawn by T.C.M.
 Checked by
 Revised by
MUSSER ENGINEERING
 RD 1 Central City, Pa.
 (814) 754-8477