

Try to draft fig 1 and 2 at same scale. 2 sides of one sheet in packet.

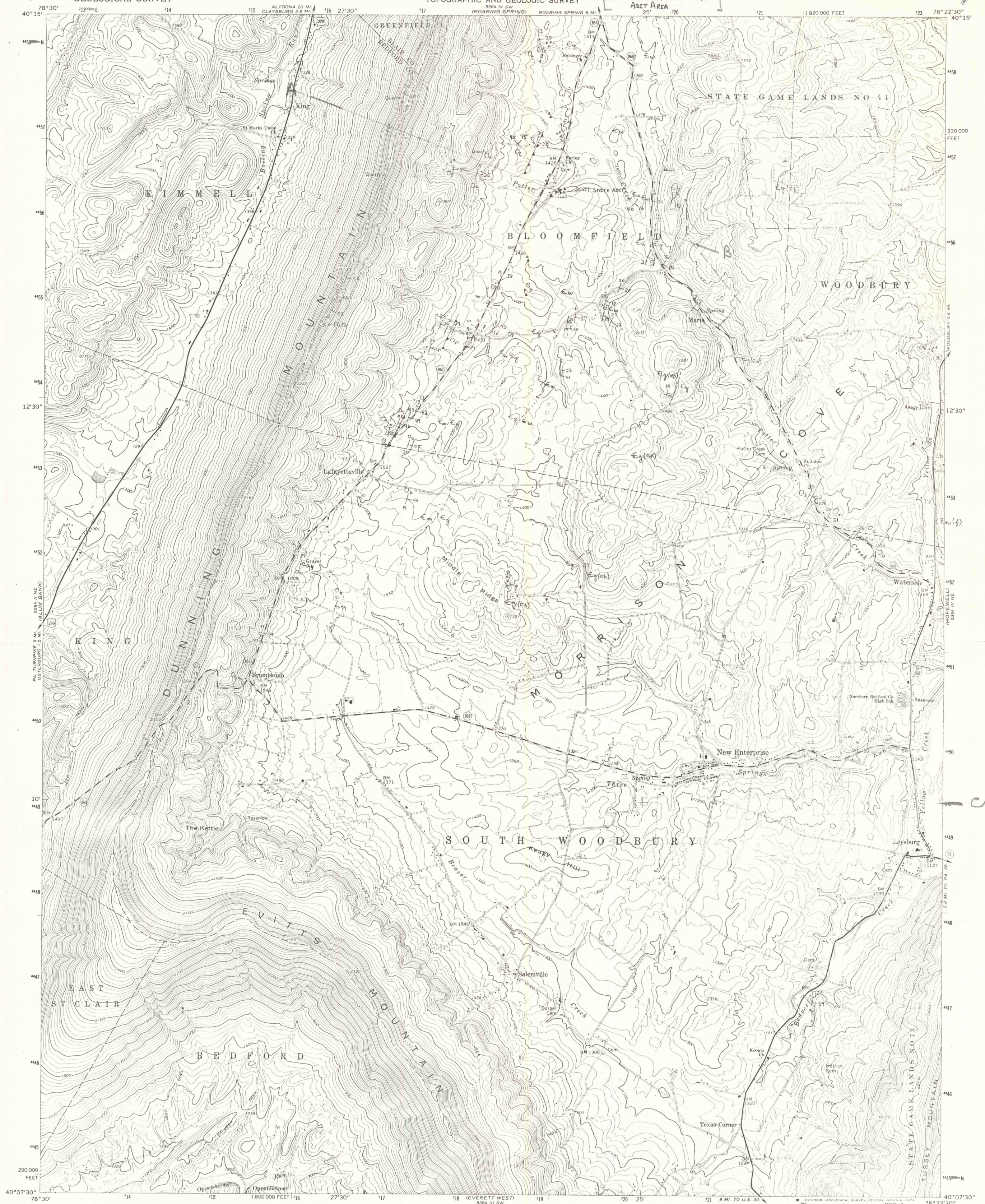
Figure 1. Reconnaissance geology of the Woodbury prospect area.

UNITED STATES
DEPARTMENT OF THE INTERIOR
GEOLOGICAL SURVEY

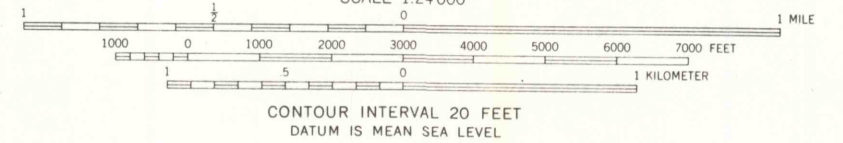
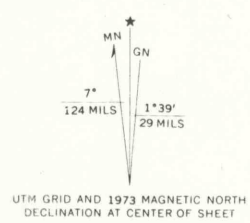
COMMONWEALTH OF PENNSYLVANIA
DEPARTMENT OF ENVIRONMENTAL RESOURCES
TOPOGRAPHIC AND GEOLOGIC SURVEY

NEW ENTERPRISE QUADRANGLE
PENNSYLVANIA
7.5 MINUTE SERIES (TOPOGRAPHIC)

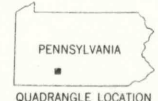
Fig. 1 Geology Scott Smith
Asst. Area



Mapped, edited, and published by the Geological Survey
Control by USGS and USC&GS
Topography by photogrammetric methods from aerial photographs taken 1966. Field checked 1968
Polyconic projection. 1927 North American datum
10,000-foot grid based on Pennsylvania coordinate system, south zone
1000-meter Universal Transverse Mercator grid ticks, zone 17, shown in blue
Fine red dashed lines indicate selected fence and field lines where generally visible on aerial photographs. This information is unchecked
Revisions shown in purple compiled in cooperation with State of Pennsylvania agencies from aerial photographs taken 1973. This information not field checked



ROAD CLASSIFICATION
Primary highway, all weather, hard surface
Secondary highway, all weather, hard surface
Light-duty road, all weather, improved surface
Unimproved road, fair or dry weather
U.S. Route
State Route



THIS MAP COMPLIES WITH NATIONAL MAP ACCURACY STANDARDS
FOR SALE BY U.S. GEOLOGICAL SURVEY, RESTON, VIRGINIA 22092
A FOLDER DESCRIBING TOPOGRAPHIC MAPS AND SYMBOLS IS AVAILABLE ON REQUEST

NEW ENTERPRISE, PA.
N4007.5-W7822.5/7.5

1968
PHOTOREVISED 1973
AMS 5364 III NW-SERIES V831

Handwritten signatures and initials.