



## Explanation

Pennsylvanian

- P<sub>cg</sub> Glenshaw Formation  
*(includes Spear, Little Pittsburgh, Big Pittsburgh coal seams)*
- P<sub>a</sub> Allegheny Formation  
*(includes Fulton, Barnett, Kelly coal seams)*
- P<sub>p</sub> Pottsville Formation

*unconformity*

Mississippian

- M<sub>mc</sub> Mauch Chunk Formation
- M<sub>b</sub> Burgoon Formation
- M<sub>dr</sub> Rockwell Formation

Devonian

- D<sub>ck</sub> Catskill Formation
- D<sub>f</sub> Foreknobs Formation
- D<sub>s</sub> Scherr Formation

## Map Symbols

- Strike and dip
- High amplitude, short wavelength antiform

Produced by the United States Geological Survey  
 Control by USGS and NGS/NOAA  
 Topography by photogrammetric methods from aerial photographs taken 1967, hand checked 1968. Revised from aerial photographs taken 1968. Map edited 1994.  
 Projection and 10,000-foot grid ticks: Pennsylvania coordinate system, south zone (Lambert conformal conic).  
 U.S. Geographical Names File and ticks, zone 17, shown in blue 1927 North American Datum (NAD 27).  
 North American Datum of 1983 (NAD 83) is shown by dashed corner ticks. The values of the shift between NAD 27 and NAD 83 for 7.5-minute intersections are given in USGS Bulletin 1875.  
 There may be private holdings within the boundaries of the National or State reservations shown on this map.  
 Contours in strip mine areas may not accurately represent present topography.  
 Light purple tint indicates reclaimed strip mine areas.  
 Fine red dashed lines indicate selected lakes and field lines where generally visible on aerial photographs. This information is unchecked.

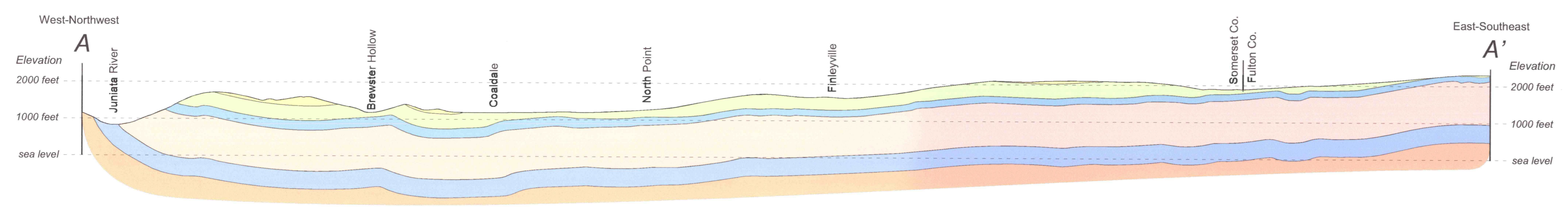
SCALE: 1:24,000  
 CONTOUR INTERVAL 20 FEET  
 NATIONAL GEODETIC VERTICAL DATUM OF 1929

ROAD CLASSIFICATION  
 Primary highway, hard surface: Light-duty road, hard or improved surface  
 Secondary highway, hard surface: Unimproved road  
 Interstate Route: U. S. Route: State Route

SAXTON, PA  
 40°7'52" N  
 78°15'00" W  
 1968  
 REVISED 1994  
 U.S. GEOLOGICAL SURVEY

# GEOLOGIC MAP AND CROSS SECTION OF THE SAXTON, PENNSYLVANIA 7.5-MINUTE QUADRANGLE

Thomas P. Becker



Support provided by the National Geologic Mapping Program (EDMAP) and the Pennsylvania Geological Survey of the Department of Conservation and Natural Resources. Mapping by Thomas P. Becker under the direction of William A. Thomas, Ph.D., University of Kentucky.