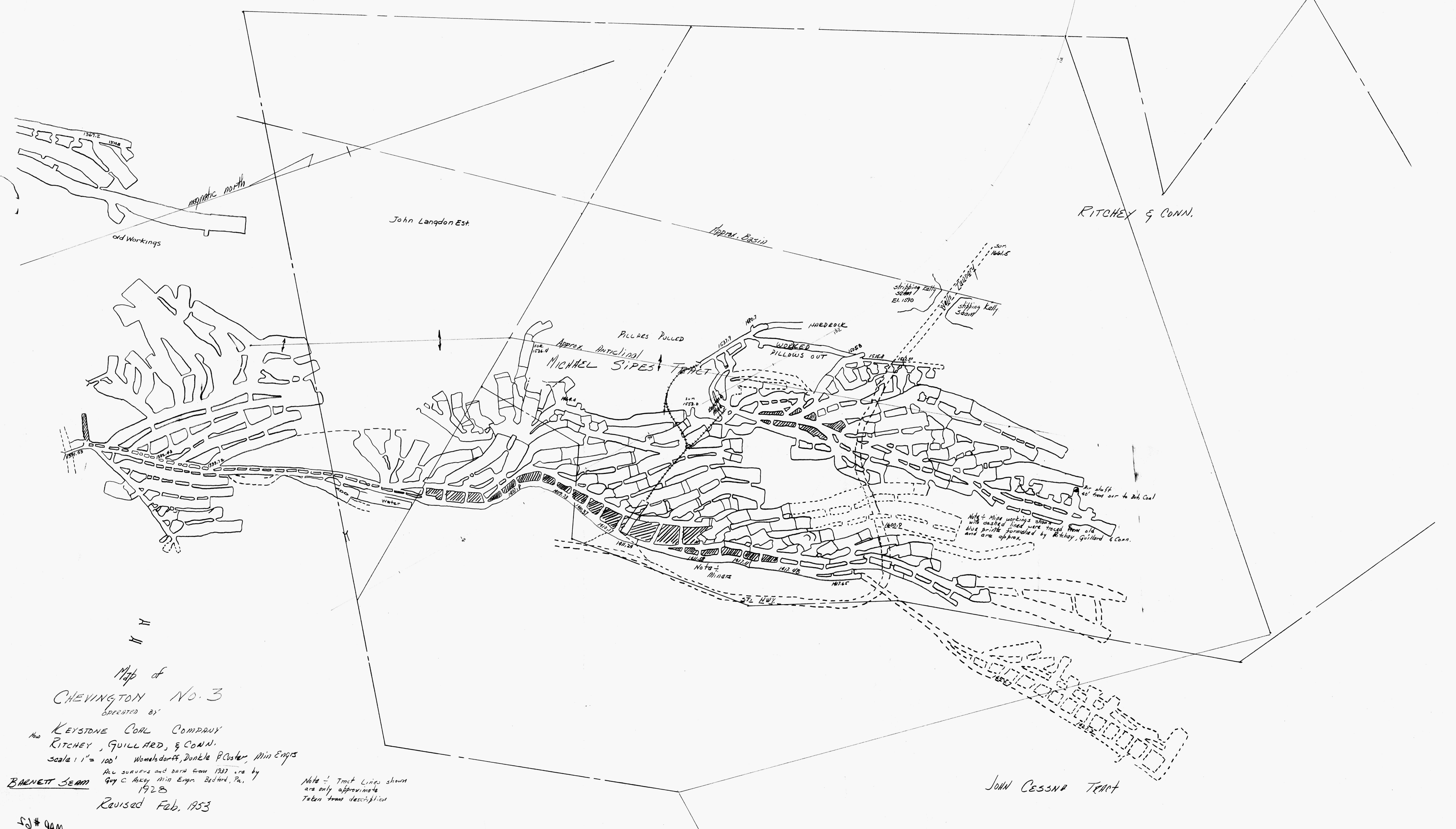


392082



RITCHEY & CONN.

Map of  
CHEVINGTON No. 3  
OPERATED BY

KEYSTONE COAL COMPANY  
RITCHEY, GUILLARD, & CONN.  
Scale 1" = 100' Womelsdorff, Dunkle & Coaster, Min Engrs

BARNETT SEAM  
All surveys and data from 1937 are by  
Guy C. Hasey, Min Engr, Bedford, Pa.,  
1928  
Revised Feb. 1953

Note - Tract Lines shown  
are only approximate  
Taken from description

JOHN CESSNA TRACT

50# 9AM