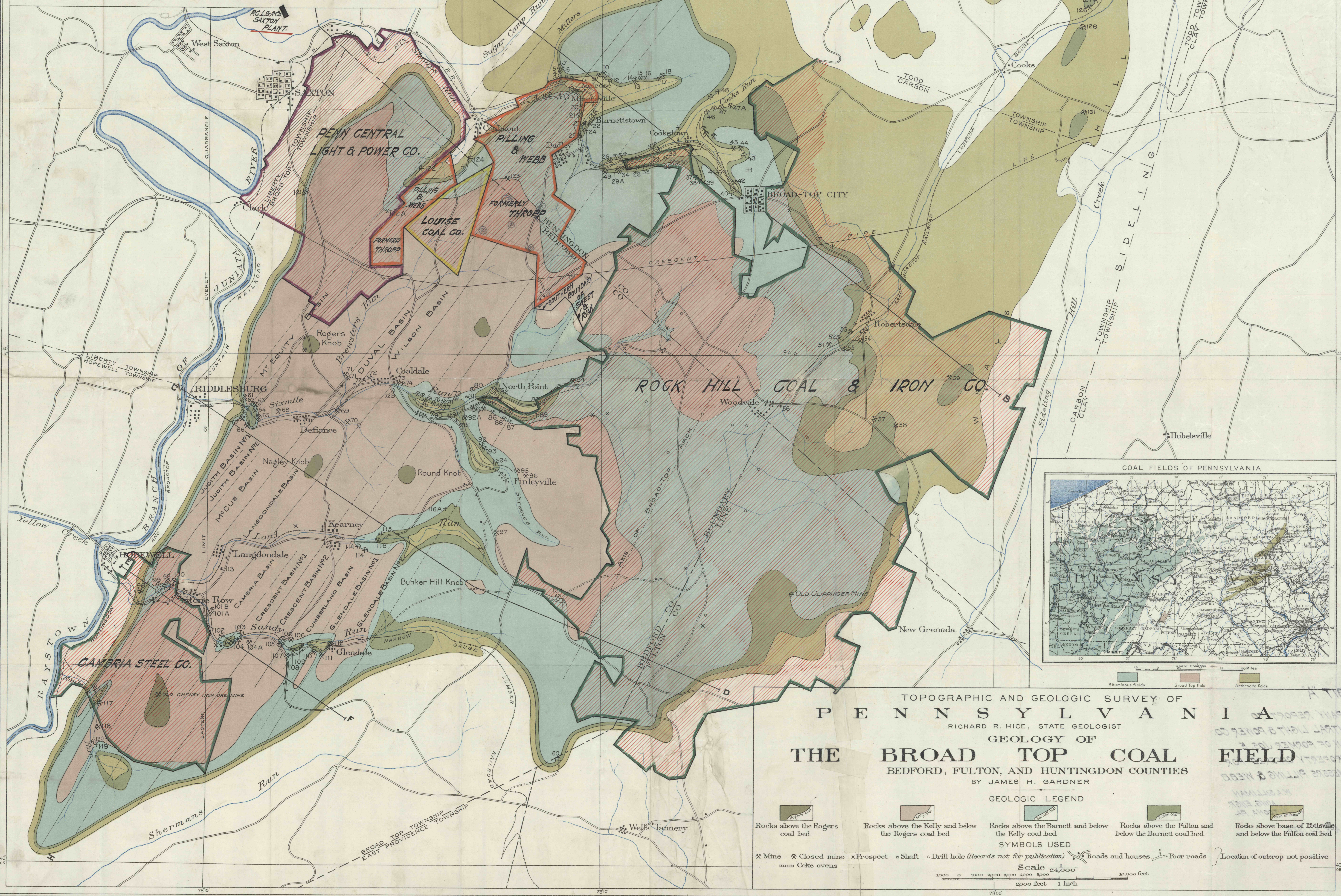


LIST OF NUMBERED MINES ON MAP.

- |                                    |   |  |  |
|------------------------------------|---|--|--|
| 1. GORDON MINE.                    | 26. KEMMAN MINE.                                  | 51. ROBERTSDALE MINE, NO. 1.                 | 76. MT. EQUITY MINE, NO. 1.                  |
| 2. OLD CUMBERLAND MINE.            | 27. DIVAL SLOPE.                                  | 52. ROBERTSDALE MINE, NO. 2.                 | 77. ROCK BAR MINE, BARNETT.                  |
| 3. OLD PROSPECT MINE.              | 28. OLD DUFFY SHAFT.                              | 53. ROBERTSDALE MINE, NO. 3.                 | 78. ROCK BAR MINE, KELLY.                    |
| 4. MILLER MINES, FULTON NO. 1.     | 29. OLD WHITON MINE AND CUNARD SHAFT.             | 54. WOODVALE SHAFT.                          | 79. JUSTH MINE.                              |
| 5. MILLER MINES, BARNETT NO. 1.    | 30. ILLINOIS MINE, NO. 1.                         | 55. WILLIAM ALLOWAY MINE.                    | 80. OLD PARROTT MINE.                        |
| 6. MILLER MINES, BARNETT NO. 2.    | 31. ILLINOIS MINE, NO. 2.                         | 56. OLD HAMILTON & HORTON MINE.              | 81. DURHAM MINE, NO. 1.                      |
| 7. MILLER MINES, BARNETT NO. 3.    | 32. ILLINOIS MINE, NO. 3.                         | 57. A. J. WISHART MINE.                      | 82. YANKES GULF OPENING TO DIVAL SLOPE MINE. |
| 8. OLD HOWE MINE.                  | 33. CRESCENT MINE, NO. 1.                         | 58. MT. EQUITY MINE, NO. 2.                  |  |
| 9. MELROSE MINES, NO. 1.           | 34. CRESCENT MINE, NO. 2.                         | 59. ROCK BAR MINE, KELLY.                    |  |
| 10. MELROSE MINES, MITCHELL.       | 35. CRESCENT MINE, NO. 3.                         | 60. JUSTH MINE.                              |  |
| 11. MELROSE MINES, NO. 1.          | 36. OLD SCOTT SHAFT.                              | 61. OLD PARROTT MINE.                        |  |
| 12. BENEDICT MINES, HOLLYHOCK.     | 37. DELAWARE MINE, NO. 1.                         | 62. DURHAM MINE, NO. 2.                      |  |
| 13. BENEDICT MINES, BARNETT NO. 1. | 38. DELAWARE MINE, NO. 2.                         | 63. YANKES GULF OPENING TO DIVAL SLOPE MINE. |  |
| 14. BENEDICT MINES, BARNETT NO. 2. | 39. DELAWARE MINE, NO. 3.                         | 64. PHIPPS MINE.                             |  |
| 15. BENEDICT MINES, GOOGOOD.       | 40. DELAWARE MINE, NO. 4.                         |  |  |
| 16. BENEDICT MINES, FULTON NO. 1.  | 41. HIGHLAND MINE, NO. 1.                         |  |  |
| 17. BENEDICT MINES, FULTON NO. 2.  | 42. THE OLD BEE HIVE MINE.                        |  |  |
| 18. BENEDICT MINES, BARNETT NO. 3. | 43. BACON MINE, NO. 1.                            |  |  |
|                                    | 44. BACON MINE, NO. 2.                            |  |  |
|                                    | 45. CUBA MINE.                                    |  |  |
|                                    | 46. BARTLE MINE, NO. 1.                           |  |  |
|                                    | 47. CUBA MINE.                                    |  |  |
|                                    | 48. PEARUT MINE.                                  |  |  |
|                                    | 49. SHERREYS RUN MINE, PLANE.                     |  |  |
|                                    | 50. SHERREYS RUN MINE, NEW PLANE (ROCK ADIT).     |  |  |
|                                    | 51. ALBERT FIGARD MINE.                           |  |  |
|                                    | 52. CAMBRIA MINE, NO. 1.                          |  |  |
|                                    | 53. OLD ZETH & DODSON MINE, KELLY.                |  |  |
|                                    | 54. OLD ZETH & DODSON MINE, ROCK ADIT TO KELLY.   |  |  |
|                                    | 55. OLD ZETH & DODSON MINE, ROCK ADIT TO BARNETT. |  |  |
|                                    | 56. A. KAWWAY TO CAMBRIA MINE, NO. 1.             |  |  |
|                                    | 57. OLD SLOPE TO CAMBRIA MINE, NO. 1.             |  |  |
|                                    | 58. CAMBRIA MINE, NO. 2.                          |  |  |
|                                    | 59. OLD CRESCENT MINE.                            |  |  |
|                                    | 60. OLD CHEVINGTON MINE, NO. 4.                   |  |  |
|                                    | 61. NEW CHEVINGTON MINE.                          |  |  |
|                                    | 62. CAMBRIA MINE, NO. 3.                          |  |  |
|                                    | 63. OLD CUMBERLAND MINE.                          |  |  |
|                                    | 64. CHEVINGTON MINE, NO. 3.                       |  |  |
|                                    | 65. GLENDALE MINE, NO. 1.                         |  |  |
|                                    | 66. GLENDALE MINE, NO. 2.                         |  |  |
|                                    | 67. GLENDALE MINE, NO. 3.                         |  |  |
|                                    | 68. GLENDALE MINE, NO. 4.                         |  |  |
|                                    | 69. GLENDALE MINE, NO. 5.                         |  |  |
|                                    | 70. GLENDALE MINE, NO. 6.                         |  |  |
|                                    | 71. GLENDALE MINE, NO. 7.                         |  |  |
|                                    | 72. GLENDALE MINE, NO. 8.                         |  |  |
|                                    | 73. GLENDALE MINE, NO. 9.                         |  |  |
|                                    | 74. GLENDALE MINE, NO. 10.                        |  |  |
|                                    | 75. GLENDALE MINE, NO. 11.                        |  |  |
|                                    | 76. GLENDALE MINE, NO. 12.                        |  |  |
|                                    | 77. GLENDALE MINE, NO. 13.                        |  |  |
|                                    | 78. GLENDALE MINE, NO. 14.                        |  |  |
|                                    | 79. GLENDALE MINE, NO. 15.                        |  |  |
|                                    | 80. GLENDALE MINE, NO. 16.                        |  |  |
|                                    | 81. GLENDALE MINE, NO. 17.                        |  |  |
|                                    | 82. GLENDALE MINE, NO. 18.                        |  |  |
|                                    | 83. GLENDALE MINE, NO. 19.                        |  |  |
|                                    | 84. GLENDALE MINE, NO. 20.                        |  |  |
|                                    | 85. GLENDALE MINE, NO. 21.                        |  |  |
|                                    | 86. GLENDALE MINE, NO. 22.                        |  |  |
|                                    | 87. GLENDALE MINE, NO. 23.                        |  |  |
|                                    | 88. GLENDALE MINE, NO. 24.                        |  |  |
|                                    | 89. GLENDALE MINE, NO. 25.                        |  |  |
|                                    | 90. GLENDALE MINE, NO. 26.                        |  |  |
|                                    | 91. GLENDALE MINE, NO. 27.                        |  |  |
|                                    | 92. GLENDALE MINE, NO. 28.                        |  |  |
|                                    | 93. GLENDALE MINE, NO. 29.                        |  |  |
|                                    | 94. GLENDALE MINE, NO. 30.                        |  |  |
|                                    | 95. GLENDALE MINE, NO. 31.                        |  |  |
|                                    | 96. GLENDALE MINE, NO. 32.                        |  |  |
|                                    | 97. GLENDALE MINE, NO. 33.                        |  |  |
|                                    | 98. GLENDALE MINE, NO. 34.                        |  |  |
|                                    | 99. GLENDALE MINE, NO. 35.                        |  |  |
|                                    | 100. GLENDALE MINE, NO. 36.                       |  |  |
|                                    | 101. GLENDALE MINE, NO. 37.                       |  |  |
|                                    | 102. GLENDALE MINE, NO. 38.                       |  |  |
|                                    | 103. GLENDALE MINE, NO. 39.                       |  |  |
|                                    | 104. GLENDALE MINE, NO. 40.                       |  |  |
|                                    | 105. GLENDALE MINE, NO. 41.                       |  |  |
|                                    | 106. GLENDALE MINE, NO. 42.                       |  |  |
|                                    | 107. GLENDALE MINE, NO. 43.                       |  |  |
|                                    | 108. GLENDALE MINE, NO. 44.                       |  |  |
|                                    | 109. GLENDALE MINE, NO. 45.                       |  |  |
|                                    | 110. GLENDALE MINE, NO. 46.                       |  |  |
|                                    | 111. GLENDALE MINE, NO. 47.                       |  |  |
|                                    | 112. GLENDALE MINE, NO. 48.                       |  |  |
|                                    | 113. GLENDALE MINE, NO. 49.                       |  |  |
|                                    | 114. GLENDALE MINE, NO. 50.                       |  |  |
|                                    | 115. GLENDALE MINE, NO. 51.                       |  |  |
|                                    | 116. GLENDALE MINE, NO. 52.                       |  |  |
|                                    | 117. GLENDALE MINE, NO. 53.                       |  |  |
|                                    | 118. GLENDALE MINE, NO. 54.                       |  |  |
|                                    | 119. GLENDALE MINE, NO. 55.                       |  |  |
|                                    | 120. GLENDALE MINE, NO. 56.                       |  |  |
|                                    | 121. GLENDALE MINE, NO. 57.                       |  |  |
|                                    | 122. GLENDALE MINE, NO. 58.                       |  |  |
|                                    | 123. GLENDALE MINE, NO. 59.                       |  |  |
|                                    | 124. GLENDALE MINE, NO. 60.                       |  |  |
|                                    | 125. GLENDALE MINE, NO. 61.                       |  |  |
|                                    | 126. GLENDALE MINE, NO. 62.                       |  |  |
|                                    | 127. GLENDALE MINE, NO. 63.                       |  |  |
|                                    | 128. GLENDALE MINE, NO. 64.                       |  |  |
|                                    | 129. GLENDALE MINE, NO. 65.                       |  |  |
|                                    | 130. GLENDALE MINE, NO. 66.                       |  |  |
|                                    | 131. GLENDALE MINE, NO. 67.                       |  |  |
|                                    | 132. GLENDALE MINE, NO. 68.                       |  |  |
|                                    | 133. GLENDALE MINE, NO. 69.                       |  |  |
|                                    | 134. GLENDALE MINE, NO. 70.                       |  |  |
|                                    | 135. GLENDALE MINE, NO. 71.                       |  |  |
|                                    | 136. GLENDALE MINE, NO. 72.                       |  |  |
|                                    | 137. GLENDALE MINE, NO. 73.                       |  |  |
|                                    | 138. GLENDALE MINE, NO. 74.                       |  |  |
|                                    | 139. GLENDALE MINE, NO. 75.                       |  |  |
|                                    | 140. GLENDALE MINE, NO. 76.                       |  |  |
|                                    | 141. GLENDALE MINE, NO. 77.                       |  |  |
|                                    | 142. GLENDALE MINE, NO. 78.                       |  |  |
|                                    | 143. GLENDALE MINE, NO. 79.                       |  |  |
|                                    | 144. GLENDALE MINE, NO. 80.                       |  |  |
|                                    | 145. GLENDALE MINE, NO. 81.                       |  |  |
|                                    | 146. GLENDALE MINE, NO. 82.                       |  |  |
|                                    | 147. GLENDALE MINE, NO. 83.                       |  |  |
|                                    | 148. GLENDALE MINE, NO. 84.                       |  |  |
|                                    | 149. GLENDALE MINE, NO. 85.                       |  |  |
|                                    | 150. GLENDALE MINE, NO. 86.                       |  |  |
|                                    | 151. GLENDALE MINE, NO. 87.                       |  |  |
|                                    | 152. GLENDALE MINE, NO. 88.                       |  |  |
|                                    | 153. GLENDALE MINE, NO. 89.                       |  |  |
|                                    | 154. GLENDALE MINE, NO. 90.                       |  |  |
|                                    | 155. GLENDALE MINE, NO. 91.                       |  |  |
|                                    | 156. GLENDALE MINE, NO. 92.                       |  |  |
|                                    | 157. GLENDALE MINE, NO. 93.                       |  |  |
|                                    | 158. GLENDALE MINE, NO. 94.                       |  |  |
|                                    | 159. GLENDALE MINE, NO. 95.                       |  |  |
|                                    | 160. GLENDALE MINE, NO. 96.                       |  |  |
|                                    | 161. GLENDALE MINE, NO. 97.                       |  |  |
|                                    | 162. GLENDALE MINE, NO. 98.                       |  |  |
|                                    | 163. GLENDALE MINE, NO. 99.                       |  |  |
|                                    | 164. GLENDALE MINE, NO. 100.                      |  |  |



TOPOGRAPHIC AND GEOLOGIC SURVEY OF  
**PENNSYLVANIA**  
 RICHARD R. HICE, STATE GEOLOGIST  
 GEOLOGY OF  
**THE BROAD TOP COAL FIELD**  
 BEDFORD, FULTON, AND HUNTINGDON COUNTIES  
 BY JAMES H. GARDNER

**GEOLOGIC LEGEND**

--	--	--	--	--

**SYMBOLS USED**

--	--	--	--	--	--	--	--

**Scale**  
 1 inch = 4000 feet  
 1 inch = 1000 feet