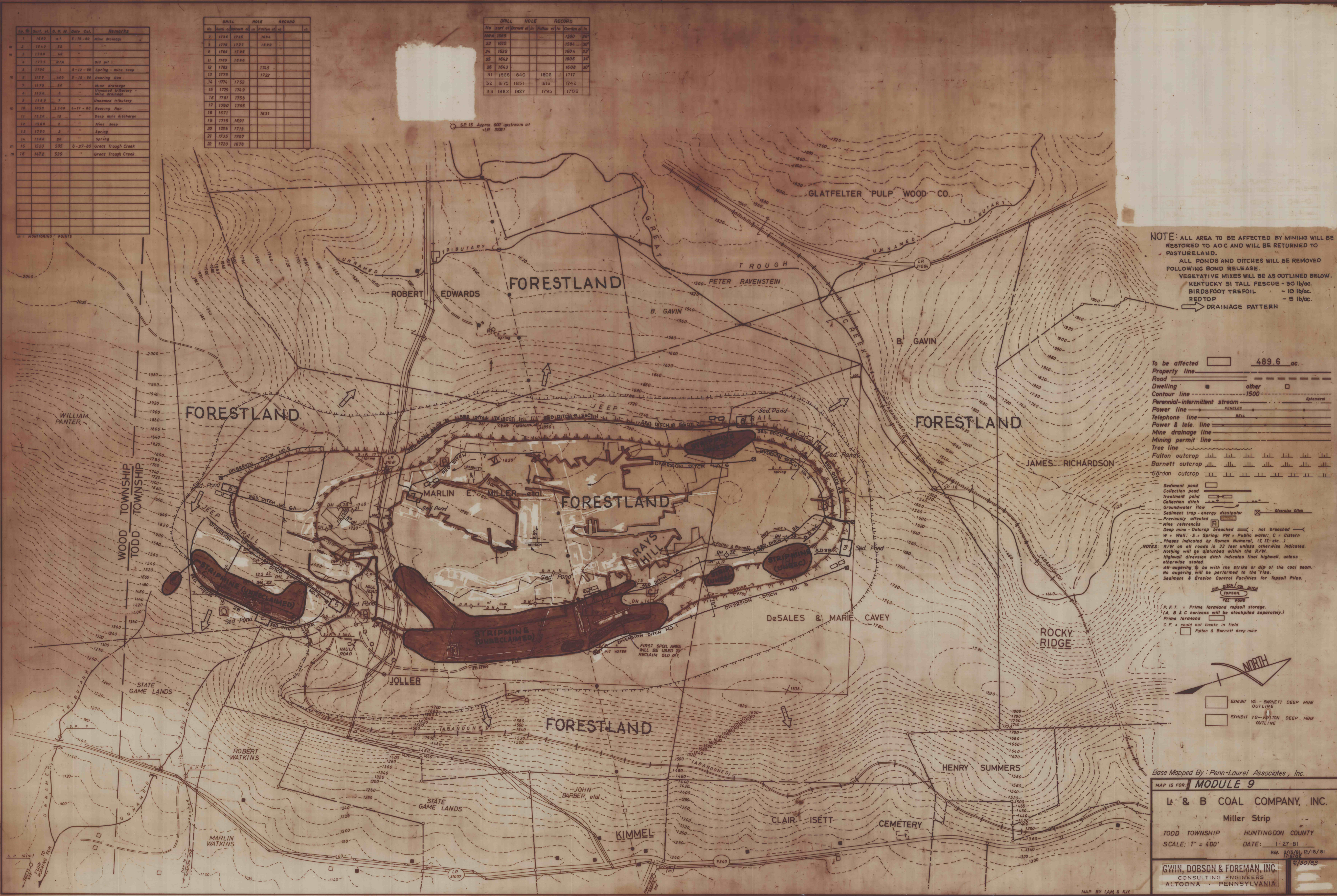


No.	Date	Drill Hole	Remarks	
1	1840	17	5-15-60	Mine drainage
2	1840	23		
3	1884	48		
4	1873	N/A		Old pit
5	1880	1	3-12-89	Spring - mine seep
6	1885	180	3-15-80	Roasting Pan
7	1875	20		Mine drainage
8	1875	2		Unnamed tributary - mine drainage
9	1880	7		Unnamed tributary
10	1885	1300	4-17-80	Roasting Pan
11	1820	12		Deep mine discharge
12	1820	2		Mine seep
13	1780	2		Spring
14	1880	30		Spring
15	1820	505	8-27-80	Great Trough Creek
16	1872	539		Great Trough Creek

DRILL HOLE RECORD			
No. of hole	Date	Depth	Remarks
7	1785	1722	1824
8	1770	1727	1899
9	1766	1768	
11	1765	1886	
12	1763		1765
13	1779		1722
14	1776	1752	
15	1779	1749	
16	1781	1758	
17	1780	1765	
18	1671		1831
19	1715	1691	
20	1728	1713	
21	1735	1707	
22	1720	1678	

DRILL HOLE RECORD			
No. of hole	Date	Depth	Remarks
23	1810		1824
24	1823		1804
25	1842		1808
26	1843		1808
31	1868	1840	1806
32	1875	1851	1816
33	1862	1827	1795



NOTE: ALL AREA TO BE AFFECTED BY MINING WILL BE RESTORED TO AOC AND WILL BE RETURNED TO PASTURELAND.
 ALL PONDS AND DITCHES WILL BE REMOVED FOLLOWING BOND RELEASE.
 VEGETATIVE MIXES WILL BE AS OUTLINED BELOW.
 KENTUCKY 31 TALL FESCUE - 30 lb/ac.
 BIRDSFOOT TREFLOIL - 10 lb/ac.
 REDTOP - 5 lb/ac.
 DRAINAGE PATTERN

- To be affected 489.6 ac.
- Property line
 - Road
 - Dwelling
 - Contour line
 - Perennial-intermittent stream
 - Power line
 - Telephone line
 - Power & tele. line
 - Mine drainage line
 - Mining permit line
 - Tree line
 - Fulton outcrop
 - Barnett outcrop
 - Gordon outcrop

Sediment pond
 Collection pond
 Treatment pond
 Collection ditch
 Groundwater flow
 Sediment trap - energy dissipator
 Previously affected
 Mine references
 Deep mine - Outcrop breached
 W = Well; S = Spring; PW = Public water; C = Cistern
 Phases indicated by Roman Numeral, (I, II, etc.)
 NOTES: R/W on all roads is 33 feet unless otherwise indicated.
 Nothing will be disturbed within the R/W.
 Highway diversion ditch indicates final highwall, unless otherwise stated.
 All auguring to be with the strike or dip of the coal seam.
 No auguring will be performed to the 'rise'.
 Sediment & Erosion Control Facilities for Topsoil Piles.

P.F.T. = Prime farmland topsoil storage.
 (A, B & C horizons will be stockpiled separately.)
 Prime farmland
 C.F. = could not locate in field
 Fulton & Barnett deep mine

Base Mapped By: Penn-Laurel Associates, Inc.
 MAP IS FOR: **MODULE 9**
L & B COAL COMPANY, INC.
 Miller Strip
 TODD TOWNSHIP HUNTINGDON COUNTY
 SCALE: 1" = 400' DATE: 1-27-81
 REV. 3/13/81, 12/16/81, 7/18/83
GWIN, DOBSON & FOREMAN, INC.
 CONSULTING ENGINEERS
 ALTOONA, PENNSYLVANIA