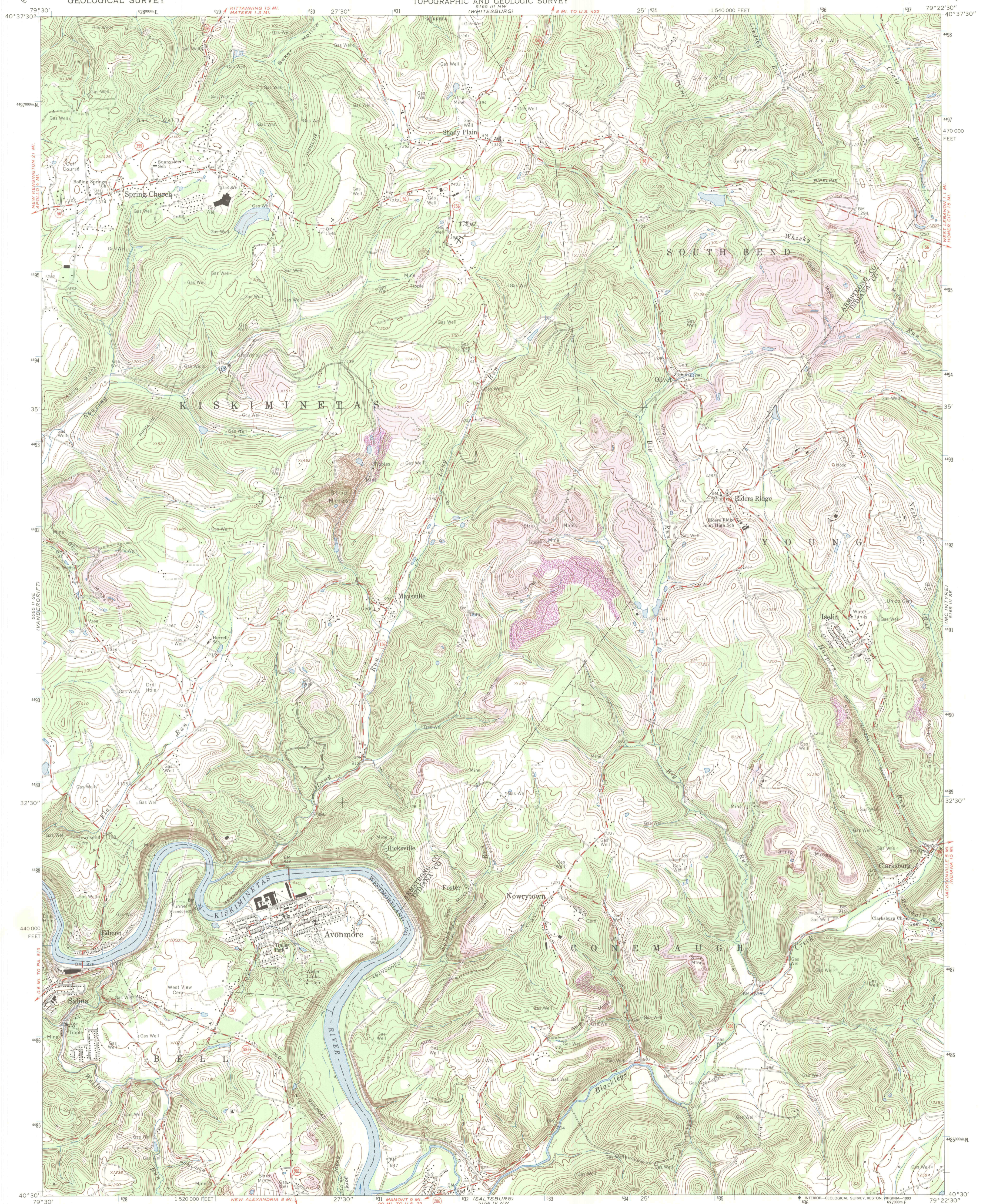
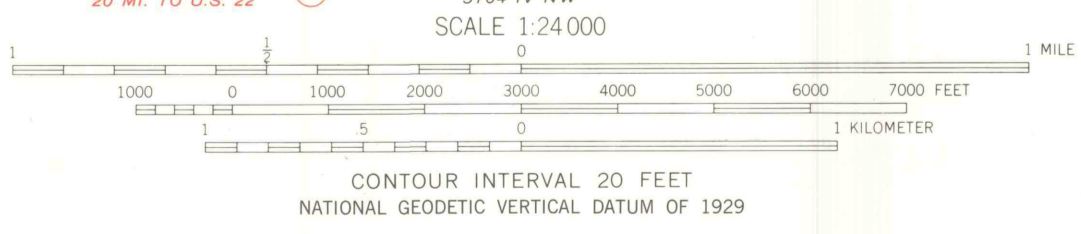
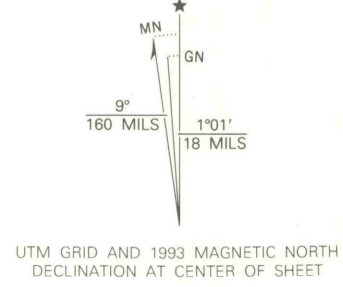


T. L. White  
40° 36' 04"  
79° 26' 32"



Mapped, edited, and published by the Geological Survey  
Control by USGS and NOS/NOAA  
Topography from aerial photographs by photogrammetric methods  
Aerial photographs taken 1962 and 1963. Field checked 1964  
Polyconic projection. 10,000-foot grid ticks based on Pennsylvania  
coordinate system, south zone  
1000-meter Universal Transverse Mercator grid ticks,  
zone 17, shown in blue  
1927 North American Datum (NAD 27)  
North American Datum of 1983 (NAD 83) is shown by dashed  
corner ticks. The values of the shift between NAD 27 and  
NAD 83 for 7.5-minute intersections are given in  
USGS Bulletin 1875  
Fine red dashed lines indicate selected fence and field lines where  
generally visible on aerial photographs. This information is unchecked  
Revisions compiled in cooperation with Commonwealth of Pennsylvania  
agencies from aerial photographs taken 1988 and other sources  
Contours not revised. This information not field checked  
Map edited 1993



CONTOUR INTERVAL 20 FEET  
NATIONAL GEODETIC VERTICAL DATUM OF 1929



ROAD CLASSIFICATION

Primary highway, hard surface	Light-duty road, hard or improved surface
Secondary highway, hard surface	Unimproved road
Interstate Route	U. S. Route
	State Route
	County Route

THIS MAP COMPLIES WITH NATIONAL MAP ACCURACY STANDARDS  
FOR SALE BY U. S. GEOLOGICAL SURVEY  
DENVER, COLORADO 80225 OR RESTON, VIRGINIA 22092  
A FOLDER DESCRIBING TOPOGRAPHIC MAPS AND SYMBOLS IS AVAILABLE ON REQUEST

AVONMORE, PA.  
40079-E4-TF-024  
1964  
REVISED 1993  
DMA 5165 III SW - SERIES V831