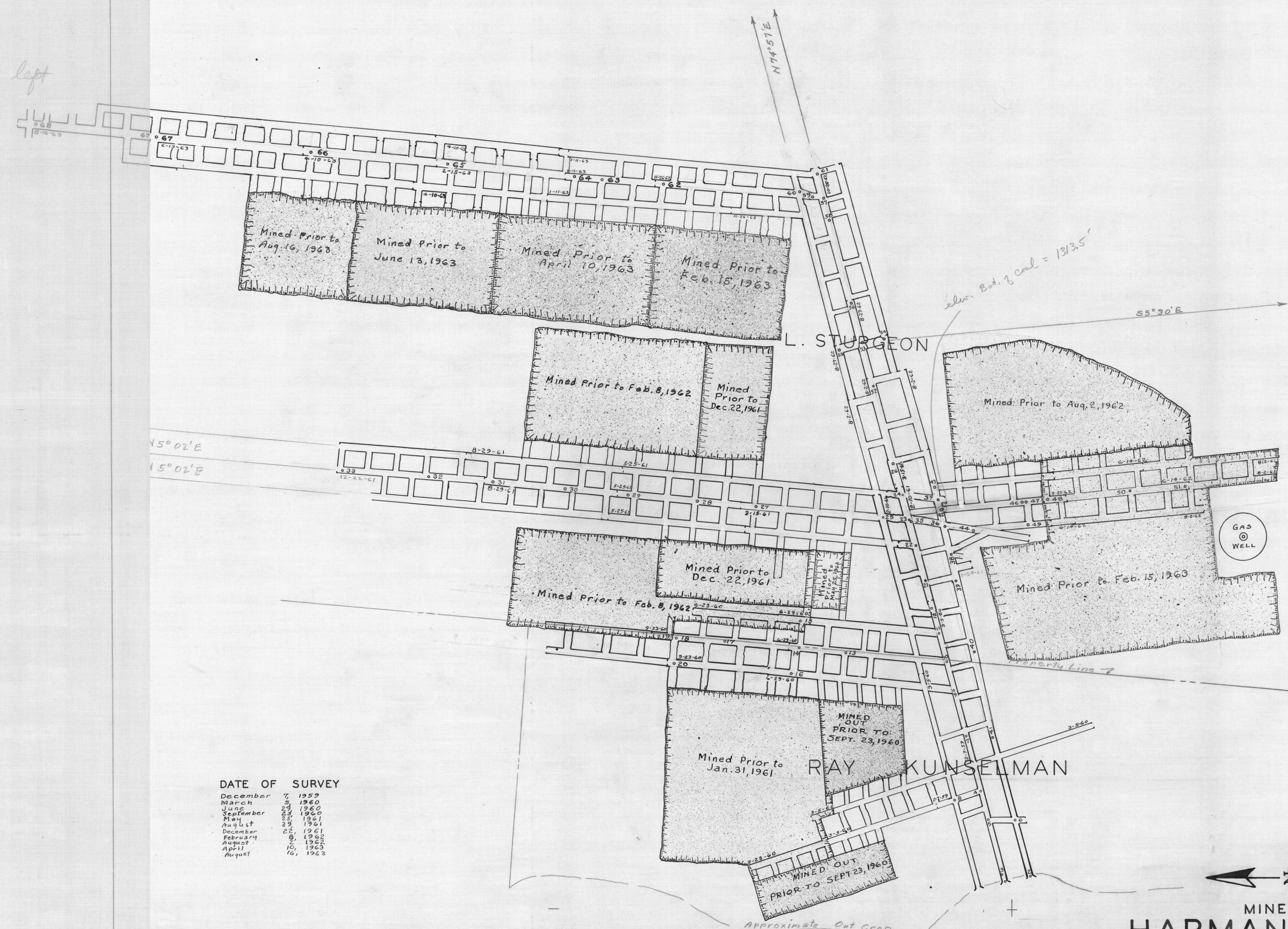


left



DATE OF SURVEY	
December	7, 1959
March	3, 1960
June	1960
September	1960
May	1961
August	1961
December	1961
February	1962
August	1962
April	10, 1963
August	16, 1963

MINE MAP  
**HARMAN COAL CO.**  
 MINE NO. 4

REDBANK TOWNSHIP, ARMSTRONG COUNTY, PENN'A.  
 SCALE 1" = 100' DECEMBER 7, 1959

Walter J. Zimmerman Engineer Punxsutawney, Penna.  
 Fred W. Wise Registered Surveyor

LK seam