

Check Points Vertical Accuracy

Date: Monday, June 6, 2022

Check Point File Path: W:\Mapping\Projects\65221207_Eagleview_Philadelphia\Survey_Control\02_Laser_Control\01_FINAL\NVA_VVA_PA_South_nad2011_g18_usFeet.shp

Project Data Unit: U.S. Survey Foot
Vertical Accuracy Class tested: 10.0-cm
Elevation Calculation Method: Interpolated from TIN
LiDAR Classifications Included: 2,8/0 Ground (All)/0W

Check Points in Report: 52
Check Points with LiDAR Coverage: 51
Check Points (NVA): 26
Check Points (VVA): 25
Average Vertical Error Reported: -0.020 U.S. Survey Foot
Maximum (highest) Vertical Error Reported: 0.193 U.S. Survey Foot
Median Vertical Error Reported: -0.025 U.S. Survey Foot
Minimum (lowest) Vertical Error Reported: -0.271 U.S. Survey Foot
Standard deviation of Vertical Error: 0.110 U.S. Survey Foot
Skewness of Vertical Error: -0.177
Kurtosis of Vertical Error: 0.341
Non-vegetated Vertical Accuracy (NVA) RMSE(z): 3.333cm PASS
Non-vegetated Vertical Accuracy (NVA) at the 95% Confidence Level +/-: 6.533cm PASS
Vegetated Vertical Accuracy (VVA) at the 95th Percentile +/-: 10.040cm PASS
FGDC/NSSDA Vertical Accuracy at the 95% Confidence Level +/-: 6.533cm
Non-vegetated Vertical Accuracy (NVA) RMSE(z) (DEM): 2.348cm PASS
Non-vegetated Vertical Accuracy (NVA) at the 95% Confidence Level +/- (DEM): 4.601cm PASS
Vegetated Vertical Accuracy (VVA) at the 95th Percentile +/- (DEM): 9.931cm PASS

This data set was tested to meet ASPRS Positional Accuracy Standard for Digital Geospatial Data (2014) for a 10.0-cm RMSEz Vertical Accuracy Class. Actual NVA accuracy was found to be RMSEz = 3.333cm, equating to +/- 6.533cm at the 95% confidence level. Actual VVA accuracy was found to be +/- 10.040cm at the 95th percentile.

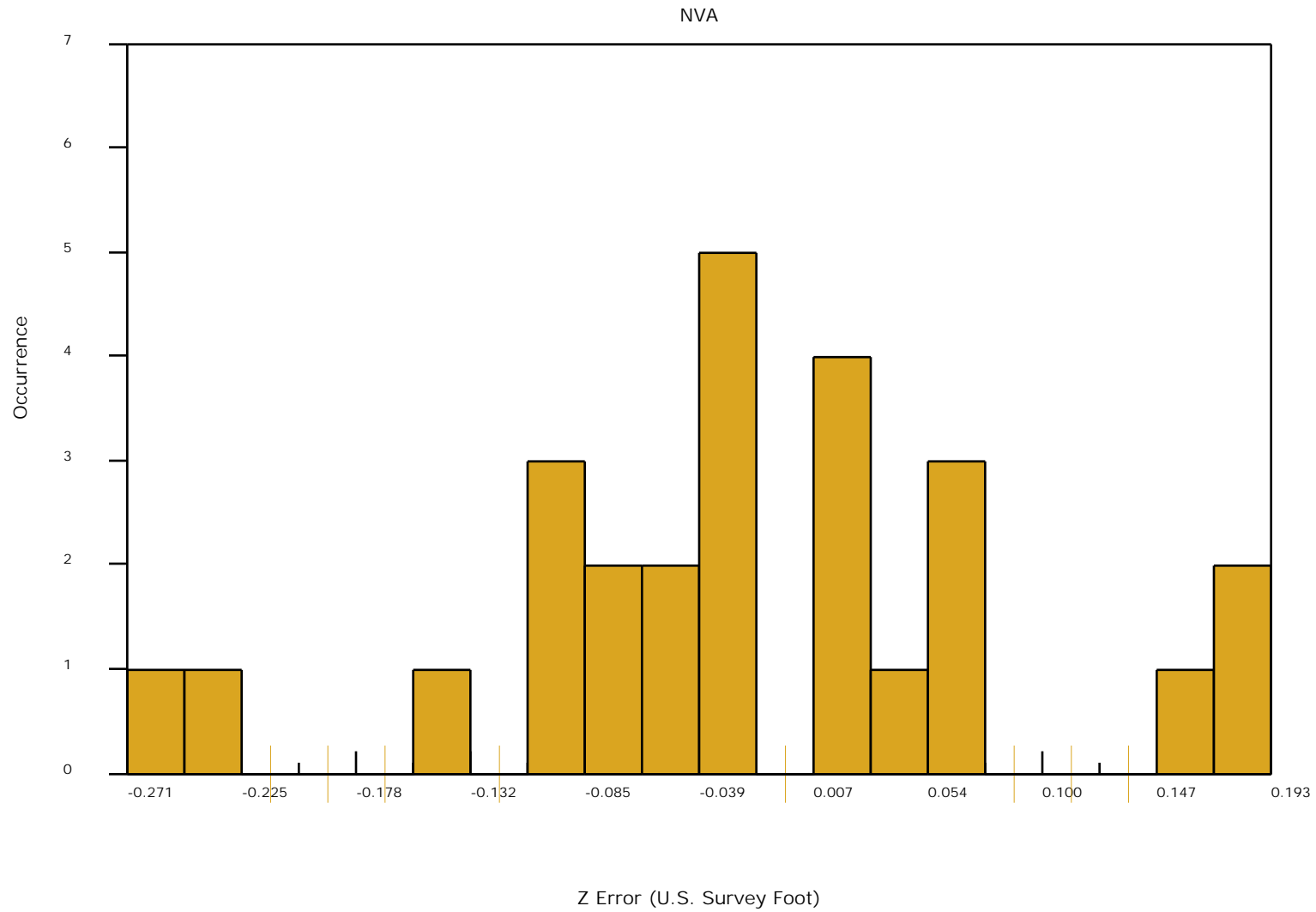
Check Points Vertical Accuracy - continued

ID	X	Y	Coverage	Z	Z From LIDAR	NVA or VVA	Z Error	Minimum Z	Median Z	Maximum Z	Intensity	Scan Angle Rank	Returns	Description	Comments
201	2649983.54	210331.27	Yes	101.22	101.413	NVA	0.193	101.27	101.4	101.421	529	1527	1,1,1	LIPT	
202	2655258.17	201598.8	Yes	10.11	10.072	NVA	-0.038	10.049	10.069	10.12	1613	-1274	1,1,1	LIPT	
203	2657615.27	188880.51	Yes	1.84	1.853	NVA	0.013	1.851	1.865	1.894	631	50	1,1,1	LIPT	
204	2669272.1	225760.12	Yes	78.2	78.213	NVA	0.013	78.184	78.222	78.293	564	-2	1,1,1	LIPT	
205	2687256.12	226065.47	Yes	32.11	32.177	NVA	0.067	32.131	32.135	32.296	979	1276	1,1,1	LIPT	
206	2703278.91	205632.46	Yes	17.48	17.49	NVA	0.01	17.468	17.504	17.517	458	-470	1,1,1	LIPT	
207	2679101.56	254908.14	Yes	239.24	239.293	NVA	0.053	239.248	239.31	239.348	315	66	1,1,1	LIPT	
208	2724395.97	248396.85	Yes	16.35	16.363	NVA	0.013	16.283	16.37	16.395	328	-9	1,1,1	LIPT	
209	2710836.09	264216.57	Yes	105.34	105.204	NVA	-0.136	105.19	105.192	105.222	873	-838	1,1,1	LIPT	
210	2674892.16	284687.95	Yes	131.75	131.726	NVA	-0.024	131.677	131.679	131.764	392	-551	1,1,1	LIPT	
211	2718883.76	283414.68	Yes	151.18	150.909	NVA	-0.271	150.875	150.882	150.953	257	3443	1,1,1	LIPT	
212	2748947.88	297557.11	Yes	113.07	112.824	NVA	-0.246	112.704	112.847	113.016	229	-375	1,1,1	LIPT	
213	2731737.04	306250.97	Yes	263.93	263.84	NVA	-0.09	263.742	263.815	263.899	359	1096	1,1,1	LIPT	
214	2743983.26	277247.92	Yes	27.76	27.735	NVA	-0.025	27.724	27.738	27.747	1090	388	1,1,1	LIPT	
215	2701274.17	247408.22	Yes	36.83	36.748	NVA	-0.082	36.719	36.776	36.781	461	-1631	1,1,1	LIPT	
216	2688730.56	266229.93	Yes	243.85	244.03	NVA	0.18	244.013	244.038	244.044	1309	-842	1,1,1	LIPT	
217	2670978.41	274805.45	Yes	408.62	408.681	NVA	0.061	408.632	408.655	408.695	944	-3585	1,1,1	LIPT	
218	2673590.6	240505.6	Yes	113.09	113.154	NVA	0.064	113.153	113.153	113.172	998	-254	1,1,1	LIPT	
219	2697412.44	237212.04	Yes	33.24	33.201	NVA	-0.039	33.193	33.215	33.217	976	-70	1,1,1	LIPT	
220	2730902.83	285218.98	Yes	123.48	123.387	NVA	-0.093	123.376	123.386	123.393	409	667	1,1,1	LIPT	
221	2670046.33	216186.03	Yes	6.46	6.383	NVA	-0.077	6.253	6.384	6.42	572	-2520	1,1,1	LIPT	
222	2690780.72	204672.48	Yes	7.44	7.591	NVA	0.151	7.538	7.591	7.592	921	-7	1,1,1	LIPT	
223	2670932.75	212228.73	Yes	11.29	11.247	NVA	-0.043	10.957	11.182	11.282	302	-2868	1,1,1	LIPT	
224	2731171.68	271487.29	Yes	96.04	95.934	NVA	-0.106	95.889	95.897	95.987	912	239	1,1,1	LIPT	
225	2689223.32	279141.02	Yes	345.31	345.252	NVA	-0.058	345.238	345.263	345.269	399	-48	1,1,1	LIPT	
226	2664240.56	205666.45	Yes	8.06	8.044	NVA	-0.016	7.984	8.041	8.086	186	104	1,1,1	LIPT	
301	2649943.29	210355.69	Yes	100.56	100.739	VVA	0.179	100.706	100.737	100.751	1802	-560	1,1,1	LIPT	
302	2655312.8	201653.59	Yes	11.68	11.607	VVA	-0.073	11.569	11.605	11.61	1853	-2320	1,1,1	LIPT	
303	2657647.33	188838.57	Yes	2.64	2.567	VVA	-0.073	2.374	2.566	2.61	884	-2562	3,3,1	LIPT	
304	2669224.78	225788.96	Yes	81.13	81.289	VVA	0.159	81.269	81.273	81.33	691	817	3,4,2	LIPT	
305	2687278.88	226080.94	Yes	33.04	32.932	VVA	-0.108	32.915	32.953	32.956	1633	-740	1,1,1	LIPT	
306	2703403.79	205858.58	Yes	13.61	13.715	VVA	0.105	13.588	13.707	13.72	1685	733	1,1,1	LIPT	
307	2678988.23	254891.82	Yes	243.98	244.468	VVA	0.488	244.447	244.477	244.487	1017	-533	2,1,2	LIPT	
308	2724493.32	248334.07	Yes	16.24	16.136	VVA	-0.104	16.111	16.142	16.156	1356	-2212	1,1,2	LIPT	
309	2710868.99	264201.23	Yes	105.32	105.115	VVA	-0.205	105.11	105.145	105.173	898	-2399	1,3,2	LIPT	

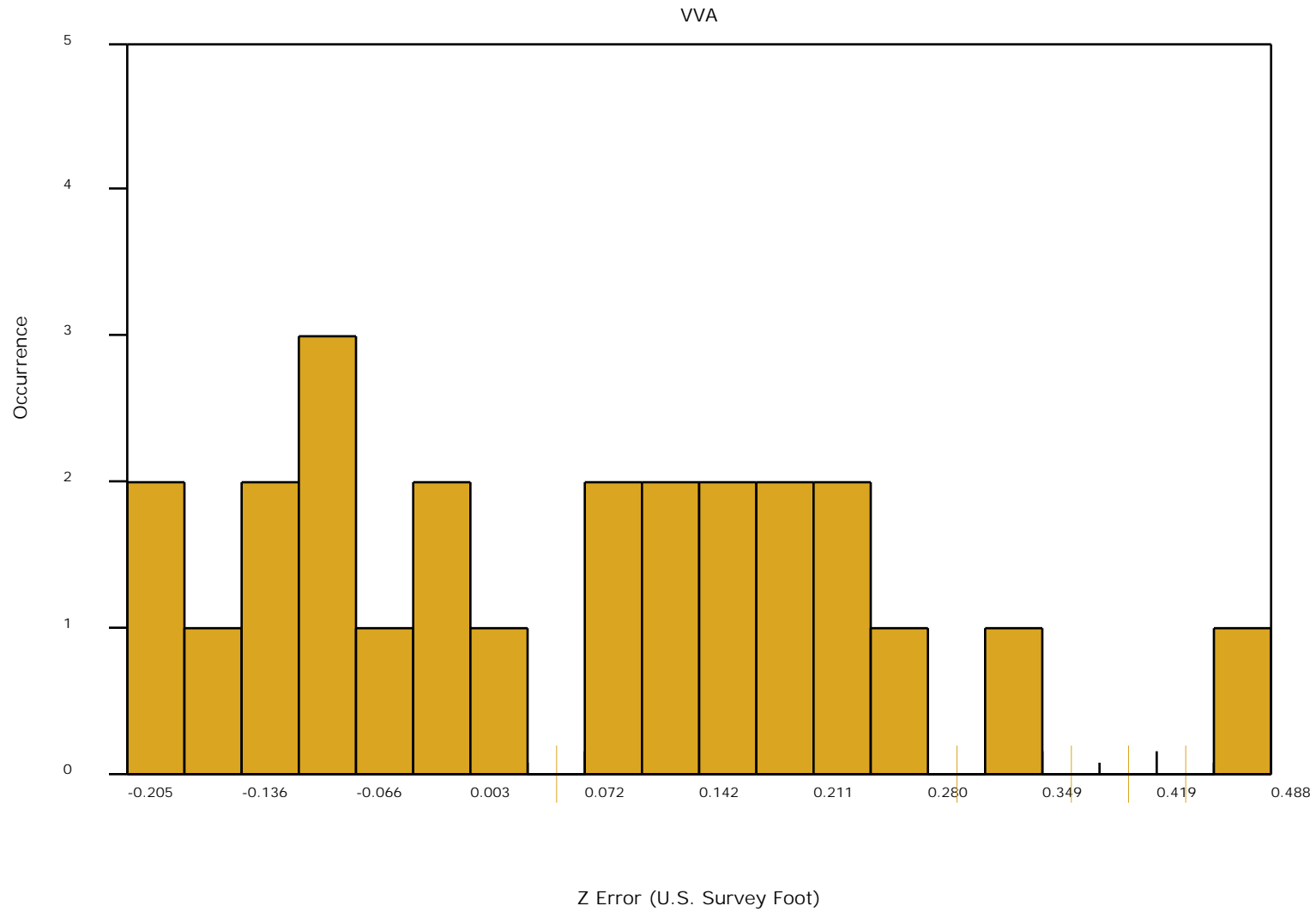
Check Points Vertical Accuracy - continued

ID	X	Y	Coverage	Z	Z From LIDAR	NVA or VVA	Z Error	Minimum Z	Median Z	Maximum Z	Intensity	Scan Angle Rank	Returns	Description	Comments
310	2674828.06	284828.62	Yes	131.17	131.299	VVA	0.129	131.268	131.278	131.319	1152	-371	2,1,2	LIPT	
311	2718911.13	283466.27	Yes	152.17	152.367	VVA	0.197	152.278	152.311	152.435	1376	306	2,1,1	LIPT	
312	2748977.72	297548.53	Yes	115.15	114.958	VVA	-0.192	114.819	114.958	115.04	1613	-925	1,1,1	LIPT	
313	2731775.42	306278.26	Yes	264.84	264.789	VVA	-0.051	264.781	264.799	264.833	1436	-2207	2,1,1	LIPT	
314	2744014.91	277268.7	Yes	28.74	28.66	VVA	-0.08	28.622	28.627	28.683	1374	238	1,1,2	LIPT	
315	2701314.71	247484.15	Yes	35.66	35.653	VVA	-0.007	35.62	35.681	35.687	1593	-669	1,1,1	LIPT	
316	2688736.14	266199.28	Yes	243.81	243.83	VVA	0.02	243.746	243.843	243.859	1791	71	1,1,1	LIPT	
317	2671002.78	274756.22	Yes	407.06	407.188	VVA	0.128	407.162	407.183	407.22	1298	1332	1,1,1	LIPT	
318	2673544.06	240560.64	No	113.66		VVA									
319	2697394.61	237220.08	Yes	34.41	34.627	VVA	0.217	34.54	34.661	34.692	1425	364	1,1,3	LIPT	
320	2730918.63	285250.35	Yes	124.35	124.515	VVA	0.165	124.424	124.471	124.523	934	-2566	1,1,1	LIPT	
321	2670016.45	216163.54	Yes	6.93	7.185	VVA	0.255	7.171	7.176	7.229	1376	-974	1,1,1	LIPT	
322	2690787.41	204700.7	Yes	7.74	7.829	VVA	0.089	7.815	7.829	7.838	1562	364	1,2,2	LIPT	
323	2670897.26	212264.05	Yes	11.43	11.294	VVA	-0.136	11.186	11.281	11.331	578	525	2,2,2	LIPT	
324	2731163.66	271421.29	Yes	96.96	96.945	VVA	-0.015	96.904	96.965	96.992	1113	3767	2,1,1	LIPT	
325	2689324.73	279196.1	Yes	344.3	344.537	VVA	0.237	344.482	344.506	344.555	1430	-1737	1,1,1	LIPT	
326	2664081.18	205794.48	Yes	8.68	9.028	VVA	0.348	8.988	9.046	9.047	311	-55	2,3,1	LIPT	

Check Points Vertical Accuracy - continued



Check Points Vertical Accuracy - continued

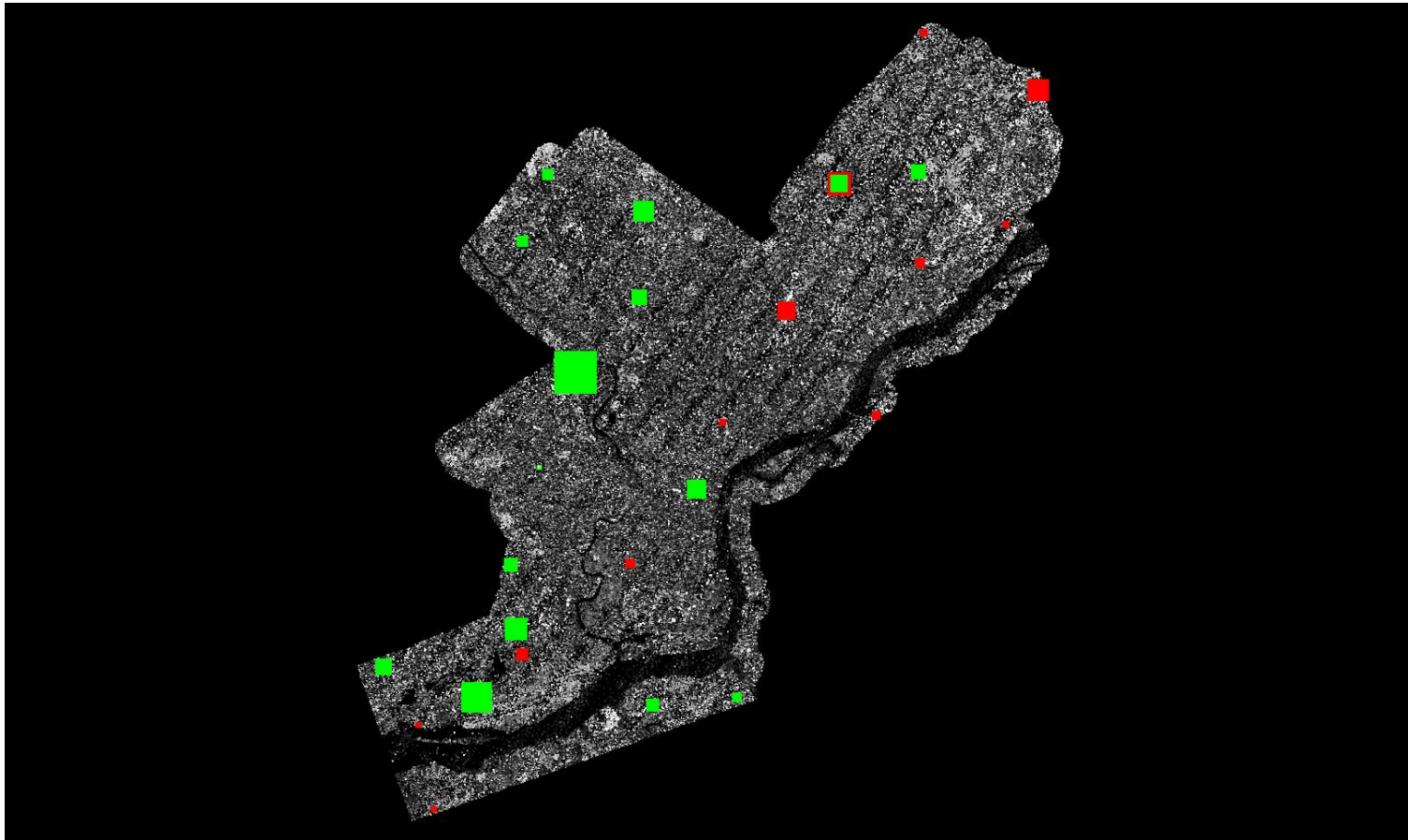


Check Points Vertical Accuracy - continued

The purpose of this section is to show a graphic of LiDAR data points colored by intensity with the check points rendered "thematically" showing the green and red squares sized by Z error.

[Data Source - D:\00 Philly\10 LiDAR Reclass\Client LAS](#)

[Result Path - W:\Mapping\Projects\65221207_Eagleview Philadelphia\Production\Final Client Deliverables\Control_Report\Eagleview Philadelphia Control Report ColorByIntensity ControlPoints.jpg](#)



Check Points Vertical Accuracy - continued

Total LAS Files: 752

Philadelphia_100.las
Philadelphia_101.las
Philadelphia_102.las
Philadelphia_103.las
Philadelphia_104.las
Philadelphia_105.las
Philadelphia_106.las
Philadelphia_107.las
Philadelphia_108.las
Philadelphia_109.las
Philadelphia_110.las
Philadelphia_111.las
Philadelphia_112.las
Philadelphia_113.las
Philadelphia_114.las
Philadelphia_115.las
Philadelphia_116.las
Philadelphia_117.las
Philadelphia_118.las
Philadelphia_119.las
Philadelphia_120.las
Philadelphia_121.las
Philadelphia_122.las
Philadelphia_123.las
Philadelphia_124.las
Philadelphia_125.las
Philadelphia_126.las
Philadelphia_127.las
Philadelphia_128.las
Philadelphia_129.las
Philadelphia_130.las
Philadelphia_131.las
Philadelphia_132.las
Philadelphia_133.las
Philadelphia_134.las
Philadelphia_135.las

Check Points Vertical Accuracy - continued

Philadelphia_136.las
Philadelphia_137.las
Philadelphia_138.las
Philadelphia_139.las
Philadelphia_140.las
Philadelphia_141.las
Philadelphia_142.las
Philadelphia_143.las
Philadelphia_144.las
Philadelphia_145.las
Philadelphia_146.las
Philadelphia_147.las
Philadelphia_148.las
Philadelphia_149.las
Philadelphia_150.las
Philadelphia_151.las
Philadelphia_152.las
Philadelphia_153.las
Philadelphia_154.las
Philadelphia_155.las
Philadelphia_156.las
Philadelphia_157.las
Philadelphia_158.las
Philadelphia_159.las
Philadelphia_160.las
Philadelphia_161.las
Philadelphia_162.las
Philadelphia_163.las
Philadelphia_164.las
Philadelphia_165.las
Philadelphia_166.las
Philadelphia_167.las
Philadelphia_168.las
Philadelphia_169.las
Philadelphia_170.las
Philadelphia_171.las

Check Points Vertical Accuracy - continued

Philadelphia_172.las
Philadelphia_173.las
Philadelphia_174.las
Philadelphia_175.las
Philadelphia_176.las
Philadelphia_177.las
Philadelphia_178.las
Philadelphia_179.las
Philadelphia_180.las
Philadelphia_181.las
Philadelphia_182.las
Philadelphia_183.las
Philadelphia_184.las
Philadelphia_185.las
Philadelphia_186.las
Philadelphia_187.las
Philadelphia_188.las
Philadelphia_189.las
Philadelphia_190.las
Philadelphia_191.las
Philadelphia_192.las
Philadelphia_193.las
Philadelphia_194.las
Philadelphia_195.las
Philadelphia_196.las
Philadelphia_197.las
Philadelphia_198.las
Philadelphia_199.las
Philadelphia_200.las
Philadelphia_201.las
Philadelphia_202.las
Philadelphia_203.las
Philadelphia_204.las
Philadelphia_205.las
Philadelphia_206.las
Philadelphia_207.las

Check Points Vertical Accuracy - continued

Philadelphia_208.las
Philadelphia_209.las
Philadelphia_210.las
Philadelphia_211.las
Philadelphia_212.las
Philadelphia_213.las
Philadelphia_214.las
Philadelphia_215.las
Philadelphia_216.las
Philadelphia_217.las
Philadelphia_218.las
Philadelphia_219.las
Philadelphia_220.las
Philadelphia_221.las
Philadelphia_222.las
Philadelphia_223.las
Philadelphia_224.las
Philadelphia_225.las
Philadelphia_226.las
Philadelphia_227.las
Philadelphia_228.las
Philadelphia_229.las
Philadelphia_230.las
Philadelphia_231.las
Philadelphia_232.las
Philadelphia_233.las
Philadelphia_234.las
Philadelphia_235.las
Philadelphia_236.las
Philadelphia_237.las
Philadelphia_238.las
Philadelphia_239.las
Philadelphia_240.las
Philadelphia_241.las
Philadelphia_242.las
Philadelphia_243.las

Check Points Vertical Accuracy - continued

Philadelphia_244.las
Philadelphia_245.las
Philadelphia_246.las
Philadelphia_247.las
Philadelphia_248.las
Philadelphia_249.las
Philadelphia_250.las
Philadelphia_251.las
Philadelphia_252.las
Philadelphia_253.las
Philadelphia_254.las
Philadelphia_255.las
Philadelphia_256.las
Philadelphia_257.las
Philadelphia_258.las
Philadelphia_259.las
Philadelphia_260.las
Philadelphia_261.las
Philadelphia_262.las
Philadelphia_263.las
Philadelphia_264.las
Philadelphia_265.las
Philadelphia_266.las
Philadelphia_267.las
Philadelphia_268.las
Philadelphia_269.las
Philadelphia_270.las
Philadelphia_271.las
Philadelphia_272.las
Philadelphia_273.las
Philadelphia_274.las
Philadelphia_275.las
Philadelphia_276.las
Philadelphia_277.las
Philadelphia_278.las
Philadelphia_279.las

Check Points Vertical Accuracy - continued

Philadelphia_280.las
Philadelphia_281.las
Philadelphia_282.las
Philadelphia_283.las
Philadelphia_284.las
Philadelphia_285.las
Philadelphia_286.las
Philadelphia_287.las
Philadelphia_288.las
Philadelphia_289.las
Philadelphia_290.las
Philadelphia_291.las
Philadelphia_292.las
Philadelphia_293.las
Philadelphia_294.las
Philadelphia_295.las
Philadelphia_296.las
Philadelphia_297.las
Philadelphia_298.las
Philadelphia_299.las
Philadelphia_300.las
Philadelphia_301.las
Philadelphia_302.las
Philadelphia_303.las
Philadelphia_304.las
Philadelphia_305.las
Philadelphia_306.las
Philadelphia_307.las
Philadelphia_308.las
Philadelphia_309.las
Philadelphia_310.las
Philadelphia_311.las
Philadelphia_312.las
Philadelphia_313.las
Philadelphia_314.las
Philadelphia_315.las

Check Points Vertical Accuracy - continued

Philadelphia_316.las
Philadelphia_317.las
Philadelphia_318.las
Philadelphia_319.las
Philadelphia_320.las
Philadelphia_321.las
Philadelphia_322.las
Philadelphia_323.las
Philadelphia_324.las
Philadelphia_325.las
Philadelphia_326.las
Philadelphia_327.las
Philadelphia_328.las
Philadelphia_329.las
Philadelphia_330.las
Philadelphia_331.las
Philadelphia_332.las
Philadelphia_333.las
Philadelphia_334.las
Philadelphia_335.las
Philadelphia_336.las
Philadelphia_337.las
Philadelphia_338.las
Philadelphia_339.las
Philadelphia_340.las
Philadelphia_341.las
Philadelphia_342.las
Philadelphia_343.las
Philadelphia_344.las
Philadelphia_345.las
Philadelphia_346.las
Philadelphia_347.las
Philadelphia_348.las
Philadelphia_349.las
Philadelphia_350.las
Philadelphia_351.las

Check Points Vertical Accuracy - continued

Philadelphia_352.las
Philadelphia_353.las
Philadelphia_354.las
Philadelphia_355.las
Philadelphia_356.las
Philadelphia_357.las
Philadelphia_358.las
Philadelphia_359.las
Philadelphia_360.las
Philadelphia_361.las
Philadelphia_362.las
Philadelphia_363.las
Philadelphia_364.las
Philadelphia_365.las
Philadelphia_366.las
Philadelphia_367.las
Philadelphia_368.las
Philadelphia_369.las
Philadelphia_370.las
Philadelphia_371.las
Philadelphia_372.las
Philadelphia_373.las
Philadelphia_374.las
Philadelphia_375.las
Philadelphia_376.las
Philadelphia_377.las
Philadelphia_378.las
Philadelphia_379.las
Philadelphia_380.las
Philadelphia_381.las
Philadelphia_382.las
Philadelphia_383.las
Philadelphia_384.las
Philadelphia_385.las
Philadelphia_386.las
Philadelphia_387.las

Check Points Vertical Accuracy - continued

Philadelphia_388.las
Philadelphia_389.las
Philadelphia_390.las
Philadelphia_391.las
Philadelphia_392.las
Philadelphia_393.las
Philadelphia_394.las
Philadelphia_395.las
Philadelphia_396.las
Philadelphia_397.las
Philadelphia_398.las
Philadelphia_399.las
Philadelphia_400.las
Philadelphia_401.las
Philadelphia_402.las
Philadelphia_403.las
Philadelphia_404.las
Philadelphia_405.las
Philadelphia_406.las
Philadelphia_407.las
Philadelphia_408.las
Philadelphia_409.las
Philadelphia_410.las
Philadelphia_411.las
Philadelphia_412.las
Philadelphia_413.las
Philadelphia_414.las
Philadelphia_415.las
Philadelphia_416.las
Philadelphia_417.las
Philadelphia_418.las
Philadelphia_419.las
Philadelphia_420.las
Philadelphia_421.las
Philadelphia_422.las
Philadelphia_423.las

Check Points Vertical Accuracy - continued

Philadelphia_424.las
Philadelphia_425.las
Philadelphia_426.las
Philadelphia_427.las
Philadelphia_428.las
Philadelphia_429.las
Philadelphia_430.las
Philadelphia_431.las
Philadelphia_432.las
Philadelphia_433.las
Philadelphia_434.las
Philadelphia_435.las
Philadelphia_436.las
Philadelphia_437.las
Philadelphia_438.las
Philadelphia_439.las
Philadelphia_440.las
Philadelphia_441.las
Philadelphia_442.las
Philadelphia_443.las
Philadelphia_444.las
Philadelphia_445.las
Philadelphia_446.las
Philadelphia_447.las
Philadelphia_448.las
Philadelphia_449.las
Philadelphia_450.las
Philadelphia_451.las
Philadelphia_452.las
Philadelphia_453.las
Philadelphia_454.las
Philadelphia_455.las
Philadelphia_456.las
Philadelphia_457.las
Philadelphia_458.las
Philadelphia_459.las

Check Points Vertical Accuracy - continued

Philadelphia_460.las
Philadelphia_461.las
Philadelphia_462.las
Philadelphia_463.las
Philadelphia_464.las
Philadelphia_465.las
Philadelphia_466.las
Philadelphia_467.las
Philadelphia_468.las
Philadelphia_469.las
Philadelphia_470.las
Philadelphia_471.las
Philadelphia_472.las
Philadelphia_473.las
Philadelphia_474.las
Philadelphia_475.las
Philadelphia_476.las
Philadelphia_477.las
Philadelphia_478.las
Philadelphia_479.las
Philadelphia_480.las
Philadelphia_481.las
Philadelphia_482.las
Philadelphia_483.las
Philadelphia_484.las
Philadelphia_485.las
Philadelphia_486.las
Philadelphia_487.las
Philadelphia_488.las
Philadelphia_489.las
Philadelphia_490.las
Philadelphia_491.las
Philadelphia_492.las
Philadelphia_493.las
Philadelphia_494.las
Philadelphia_495.las

Check Points Vertical Accuracy - continued

Philadelphia_496.las
Philadelphia_497.las
Philadelphia_498.las
Philadelphia_499.las
Philadelphia_500.las
Philadelphia_501.las
Philadelphia_502.las
Philadelphia_503.las
Philadelphia_504.las
Philadelphia_505.las
Philadelphia_506.las
Philadelphia_507.las
Philadelphia_508.las
Philadelphia_509.las
Philadelphia_510.las
Philadelphia_511.las
Philadelphia_512.las
Philadelphia_513.las
Philadelphia_514.las
Philadelphia_515.las
Philadelphia_516.las
Philadelphia_517.las
Philadelphia_518.las
Philadelphia_519.las
Philadelphia_520.las
Philadelphia_521.las
Philadelphia_522.las
Philadelphia_523.las
Philadelphia_524.las
Philadelphia_525.las
Philadelphia_526.las
Philadelphia_527.las
Philadelphia_528.las
Philadelphia_529.las
Philadelphia_530.las
Philadelphia_531.las

Check Points Vertical Accuracy - continued

Philadelphia_532.las
Philadelphia_533.las
Philadelphia_534.las
Philadelphia_535.las
Philadelphia_536.las
Philadelphia_537.las
Philadelphia_538.las
Philadelphia_539.las
Philadelphia_540.las
Philadelphia_541.las
Philadelphia_542.las
Philadelphia_543.las
Philadelphia_544.las
Philadelphia_545.las
Philadelphia_546.las
Philadelphia_547.las
Philadelphia_548.las
Philadelphia_549.las
Philadelphia_550.las
Philadelphia_551.las
Philadelphia_552.las
Philadelphia_553.las
Philadelphia_554.las
Philadelphia_555.las
Philadelphia_556.las
Philadelphia_557.las
Philadelphia_558.las
Philadelphia_559.las
Philadelphia_560.las
Philadelphia_561.las
Philadelphia_562.las
Philadelphia_563.las
Philadelphia_564.las
Philadelphia_565.las
Philadelphia_566.las
Philadelphia_567.las

Check Points Vertical Accuracy - continued

Philadelphia_568.las
Philadelphia_569.las
Philadelphia_570.las
Philadelphia_571.las
Philadelphia_572.las
Philadelphia_573.las
Philadelphia_574.las
Philadelphia_575.las
Philadelphia_576.las
Philadelphia_577.las
Philadelphia_578.las
Philadelphia_579.las
Philadelphia_580.las
Philadelphia_581.las
Philadelphia_582.las
Philadelphia_583.las
Philadelphia_584.las
Philadelphia_585.las
Philadelphia_586.las
Philadelphia_587.las
Philadelphia_588.las
Philadelphia_589.las
Philadelphia_590.las
Philadelphia_591.las
Philadelphia_592.las
Philadelphia_593.las
Philadelphia_594.las
Philadelphia_595.las
Philadelphia_596.las
Philadelphia_597.las
Philadelphia_598.las
Philadelphia_599.las
Philadelphia_600.las
Philadelphia_601.las
Philadelphia_602.las
Philadelphia_603.las

Check Points Vertical Accuracy - continued

Philadelphia_604.las
Philadelphia_605.las
Philadelphia_606.las
Philadelphia_607.las
Philadelphia_608.las
Philadelphia_609.las
Philadelphia_610.las
Philadelphia_611.las
Philadelphia_612.las
Philadelphia_613.las
Philadelphia_614.las
Philadelphia_615.las
Philadelphia_616.las
Philadelphia_617.las
Philadelphia_618.las
Philadelphia_619.las
Philadelphia_620.las
Philadelphia_621.las
Philadelphia_622.las
Philadelphia_623.las
Philadelphia_624.las
Philadelphia_625.las
Philadelphia_626.las
Philadelphia_627.las
Philadelphia_628.las
Philadelphia_629.las
Philadelphia_630.las
Philadelphia_631.las
Philadelphia_632.las
Philadelphia_633.las
Philadelphia_634.las
Philadelphia_635.las
Philadelphia_636.las
Philadelphia_637.las
Philadelphia_638.las
Philadelphia_639.las

Check Points Vertical Accuracy - continued

Philadelphia_640.las
Philadelphia_641.las
Philadelphia_642.las
Philadelphia_643.las
Philadelphia_644.las
Philadelphia_645.las
Philadelphia_646.las
Philadelphia_647.las
Philadelphia_648.las
Philadelphia_649.las
Philadelphia_650.las
Philadelphia_651.las
Philadelphia_652.las
Philadelphia_653.las
Philadelphia_654.las
Philadelphia_655.las
Philadelphia_656.las
Philadelphia_657.las
Philadelphia_658.las
Philadelphia_659.las
Philadelphia_660.las
Philadelphia_661.las
Philadelphia_662.las
Philadelphia_663.las
Philadelphia_664.las
Philadelphia_665.las
Philadelphia_666.las
Philadelphia_667.las
Philadelphia_668.las
Philadelphia_669.las
Philadelphia_670.las
Philadelphia_671.las
Philadelphia_672.las
Philadelphia_673.las
Philadelphia_674.las
Philadelphia_675.las

Check Points Vertical Accuracy - continued

Philadelphia_676.las
Philadelphia_677.las
Philadelphia_678.las
Philadelphia_679.las
Philadelphia_680.las
Philadelphia_681.las
Philadelphia_682.las
Philadelphia_683.las
Philadelphia_684.las
Philadelphia_685.las
Philadelphia_686.las
Philadelphia_687.las
Philadelphia_688.las
Philadelphia_689.las
Philadelphia_690.las
Philadelphia_691.las
Philadelphia_692.las
Philadelphia_693.las
Philadelphia_694.las
Philadelphia_695.las
Philadelphia_696.las
Philadelphia_697.las
Philadelphia_698.las
Philadelphia_699.las
Philadelphia_700.las
Philadelphia_701.las
Philadelphia_702.las
Philadelphia_703.las
Philadelphia_704.las
Philadelphia_705.las
Philadelphia_706.las
Philadelphia_707.las
Philadelphia_708.las
Philadelphia_709.las
Philadelphia_710.las
Philadelphia_711.las

Check Points Vertical Accuracy - continued

Philadelphia_712.las
Philadelphia_713.las
Philadelphia_714.las
Philadelphia_715.las
Philadelphia_716.las
Philadelphia_717.las
Philadelphia_718.las
Philadelphia_719.las
Philadelphia_720.las
Philadelphia_721.las
Philadelphia_722.las
Philadelphia_723.las
Philadelphia_724.las
Philadelphia_725.las
Philadelphia_726.las
Philadelphia_727.las
Philadelphia_728.las
Philadelphia_729.las
Philadelphia_730.las
Philadelphia_731.las
Philadelphia_732.las
Philadelphia_733.las
Philadelphia_734.las
Philadelphia_735.las
Philadelphia_736.las
Philadelphia_737.las
Philadelphia_738.las
Philadelphia_739.las
Philadelphia_740.las
Philadelphia_741.las
Philadelphia_742.las
Philadelphia_743.las
Philadelphia_744.las
Philadelphia_745.las
Philadelphia_746.las
Philadelphia_747.las

Check Points Vertical Accuracy - continued

Philadelphia_748.las
Philadelphia_749.las
Philadelphia_750.las
Philadelphia_751.las
Philadelphia_752.las
Philadelphia_753.las
Philadelphia_754.las
Philadelphia_755.las
Philadelphia_756.las
Philadelphia_757.las
Philadelphia_758.las
Philadelphia_759.las
Philadelphia_760.las
Philadelphia_761.las
Philadelphia_762.las
Philadelphia_763.las
Philadelphia_764.las
Philadelphia_765.las
Philadelphia_766.las
Philadelphia_767.las
Philadelphia_768.las
Philadelphia_769.las
Philadelphia_770.las
Philadelphia_771.las
Philadelphia_772.las
Philadelphia_773.las
Philadelphia_774.las
Philadelphia_775.las
Philadelphia_776.las
Philadelphia_777.las
Philadelphia_778.las
Philadelphia_779.las
Philadelphia_780.las
Philadelphia_781.las
Philadelphia_782.las
Philadelphia_783.las

Check Points Vertical Accuracy - continued

Philadelphia_784.las
Philadelphia_785.las
Philadelphia_786.las
Philadelphia_787.las
Philadelphia_788.las
Philadelphia_789.las
Philadelphia_790.las
Philadelphia_791.las
Philadelphia_792.las
Philadelphia_793.las
Philadelphia_794.las
Philadelphia_795.las
Philadelphia_796.las
Philadelphia_797.las
Philadelphia_798.las
Philadelphia_799.las
Philadelphia_800.las
Philadelphia_801.las
Philadelphia_802.las
Philadelphia_803.las
Philadelphia_804.las
Philadelphia_805.las
Philadelphia_806.las
Philadelphia_807.las
Philadelphia_808.las
Philadelphia_809.las
Philadelphia_810.las
Philadelphia_811.las
Philadelphia_812.las
Philadelphia_813.las
Philadelphia_814.las
Philadelphia_815.las
Philadelphia_816.las
Philadelphia_817.las
Philadelphia_818.las
Philadelphia_819.las

Check Points Vertical Accuracy - continued

Philadelphia_820.las
Philadelphia_821.las
Philadelphia_822.las
Philadelphia_823.las
Philadelphia_824.las
Philadelphia_825.las
Philadelphia_826.las
Philadelphia_827.las
Philadelphia_828.las
Philadelphia_829.las
Philadelphia_830.las
Philadelphia_831.las
Philadelphia_832.las
Philadelphia_833.las
Philadelphia_834.las
Philadelphia_835.las
Philadelphia_836.las
Philadelphia_837.las
Philadelphia_838.las
Philadelphia_839.las
Philadelphia_840.las
Philadelphia_841.las
Philadelphia_842.las
Philadelphia_843.las
Philadelphia_844.las
Philadelphia_845.las
Philadelphia_846.las
Philadelphia_847.las
Philadelphia_848.las
Philadelphia_849.las
Philadelphia_850.las
Philadelphia_851.las