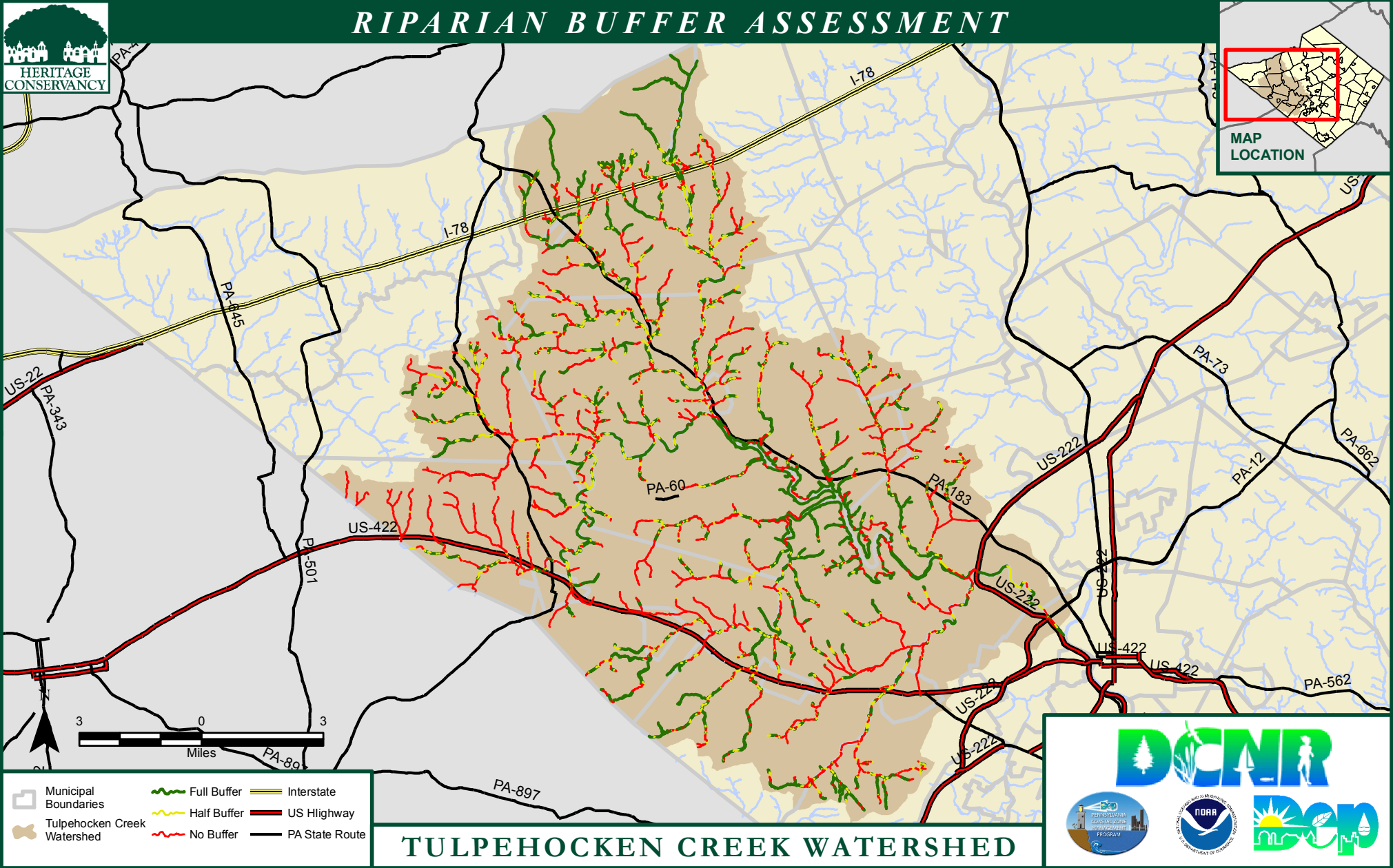


RIPARIAN BUFFER ASSESSMENT



TULPEHOCKEN CREEK WATERSHED

Riparian Buffer Assessment based on year 2004
aerial photography for Berks County

RIPARIAN BUFFER	FEET	MILES	PERCENT
FULL	837495.94	158.62	41.91%
HALF	354047.93	67.05	17.72%
NONE	806879.93	152.82	40.38%
TOTAL	1998423.80	378.49	100.00%