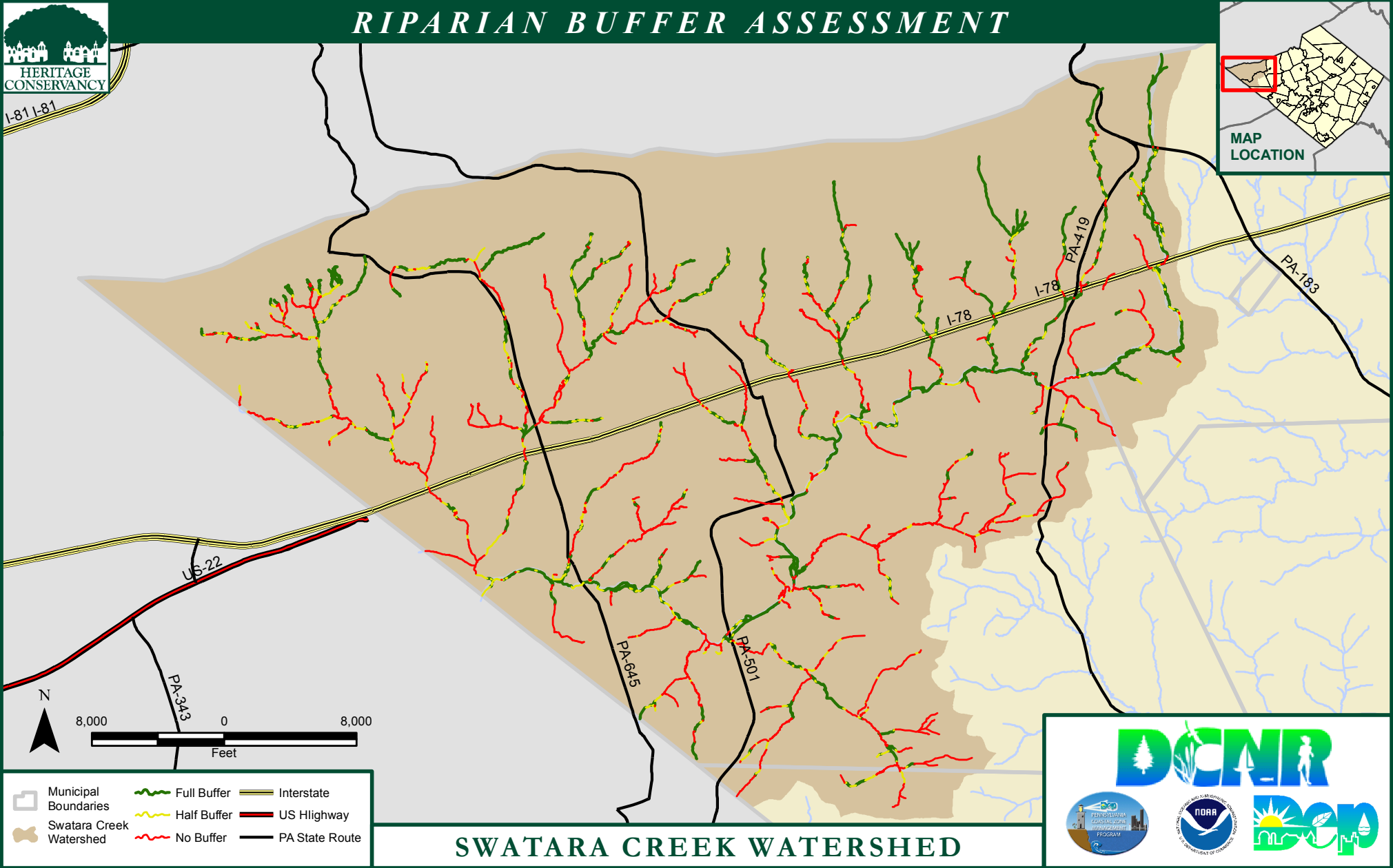


RIPARIAN BUFFER ASSESSMENT



SWATARA CREEK WATERSHED

Riparian Buffer Assessment based on year 2004
aerial photography for Berks County

RIPARIAN BUFFER	FEET	MILES	PERCENT
FULL	267668.00	50.69	38.04%
HALF	118761.78	22.49	16.88%
NONE	317299.14	60.09	45.09%
TOTAL	703728.92	133.27	100.00%