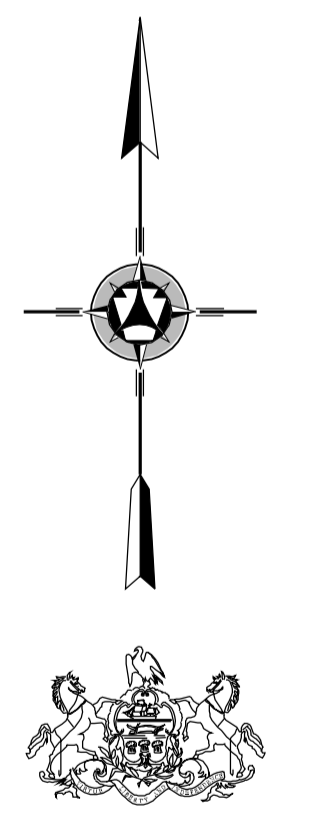
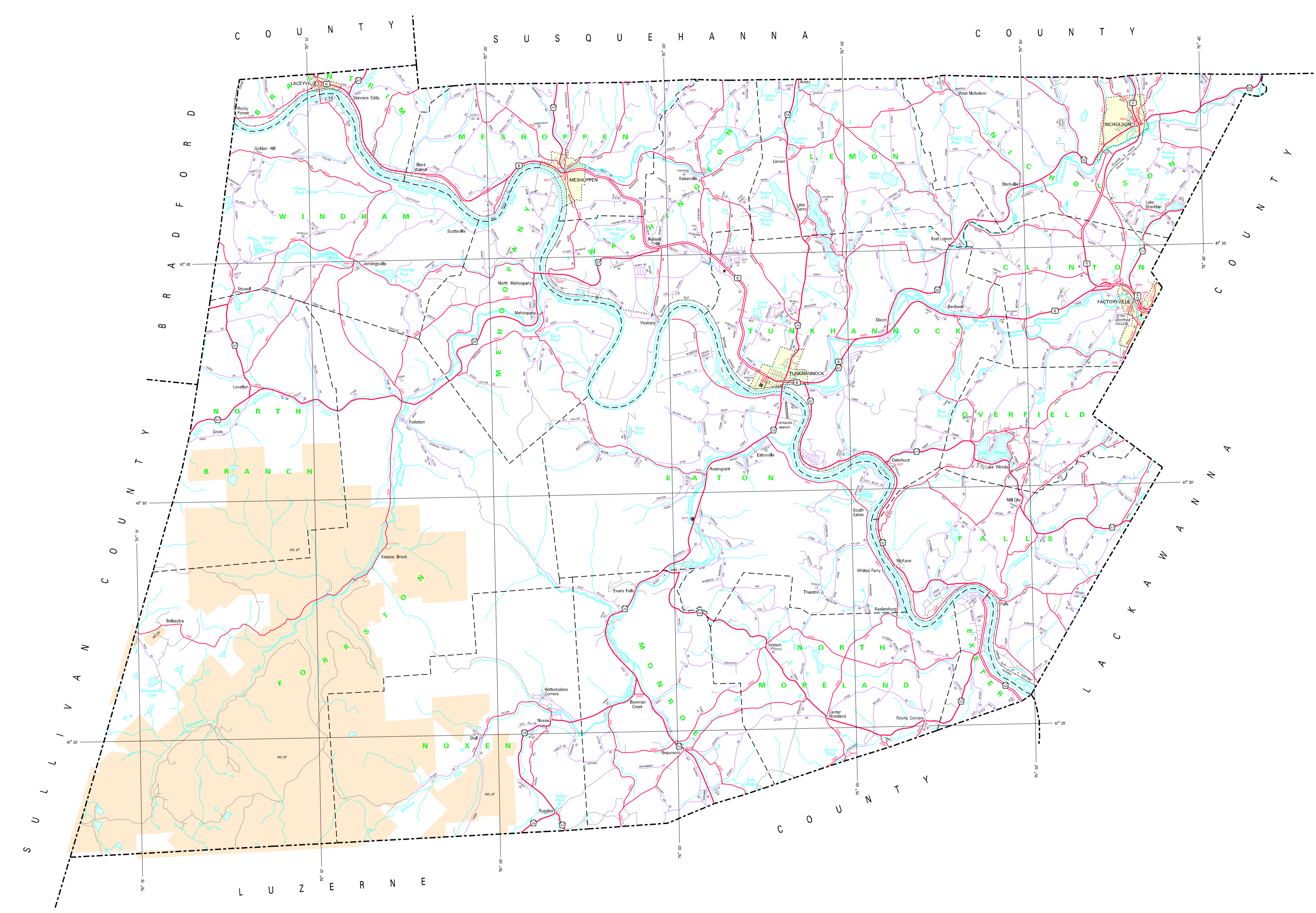
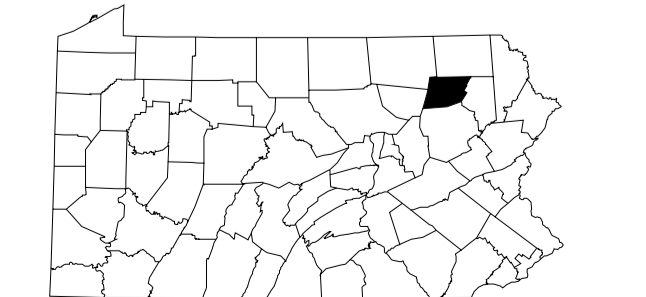


- LEGEND**
- EXPRESSWAY - ACCESS FULLY CONTROLLED
 - MAINTENANCE HIGHWAY
 - TRUNK ROUTE
 - MAINLINE STATE ROAD AND ROUTE
 - STATE MAINTAINED BRIDGE
 - TOWNHIP ROAD
 - TOWNHIP ROAD (PAVED UNIMPROVED)
 - OTHER ROAD
 - HYDROLOGIC BOUNDARY NUMBER
 - UNITED STATES TRUCK ROUTE
 - UNITED STATES TRUCK ROUTE
 - RAILROAD IN SERVICE
 - RAILROAD ABANDONED TRACK RETAINED
 - STATE LINE
 - COUNTY LINE
 - TOWNSHIP LINE
 - INCORPORATED CITY
 - INCORPORATED BOROUGH
 - STATE CAPITAL
 - COUNTY SEAT
 - OTHER CONCENTRATED
 - STATE POLICE FACILITY
 - STATE ADMINISTERED WETLAND PROPERTY
 - FEDERAL STATE DISTRIBUTION
 - POWERS OF INTEREST
 - HOME RACE TRACK
 - HARBOR
 - REST AREA AND COMFORT FACILITY
 - WELCOME CENTER AND COMFORT FACILITY
 - STATE FISH WATERSHED
 - STATE FOREST NATURAL AREA
 - STATE FOREST WILDLIFE AREA
 - STATE FOREST WILDLIFE AREA
 - STATE FOREST WILDLIFE AREA
 - STATE PARK LAND - HEADQUARTERS
 - STATE GAME LAND AND NUMBER
 - STATE ARE FEDERAL FOREST LAND
 - FEDERAL PARK RECREATION LAND
 - FEDERAL RESERVATION



1997
GENERAL HIGHWAY MAP
WYOMING COUNTY
PENNSYLVANIA

PREPARED BY THE
 PENNSYLVANIA DEPARTMENT OF TRANSPORTATION
 BUREAU OF PLANNING AND RESEARCH
 CARTOGRAPHIC INFORMATION DIVISION
 IN COOPERATION WITH THE
 U.S. DEPARTMENT OF TRANSPORTATION
 FEDERAL HIGHWAY ADMINISTRATION



POPULATION OF COUNTY 1990 Census.....28,276
 AREA OF COUNTY 1990 Census.....444
 SQ. KM.....1,146
 POLYCOG PRODUCTION

COPIES OF THIS MAP ARE AVAILABLE AT NOMINAL COST
 CONTACT:
 PENNSYLVANIA DEPARTMENT OF TRANSPORTATION
 DISTRIBUTION SERVICES UNIT
 P.O. BOX 3262
 HARRISBURG, PENNSYLVANIA 17105
 TELEPHONE (717) 781-6700

USERS SHOULD BE AWARE OF THE FACT THAT THIS MAP
 HAS BEEN REPRODUCED FROM A SOURCE THAT IS NOT
 GUARANTEED TO BE ACCURATE. THE PENNSYLVANIA DEPARTMENT OF TRANSPORTATION
 CANNOT BE HELD RESPONSIBLE FOR ANY ERRORS OR OMISSIONS.
 350 WALNUT STREET - 4TH FLOOR
 HARRISBURG, PENNSYLVANIA 17101-1000

COPYRIGHT - COMMONWEALTH OF PENNSYLVANIA
 DEPARTMENT OF GENERAL SERVICES