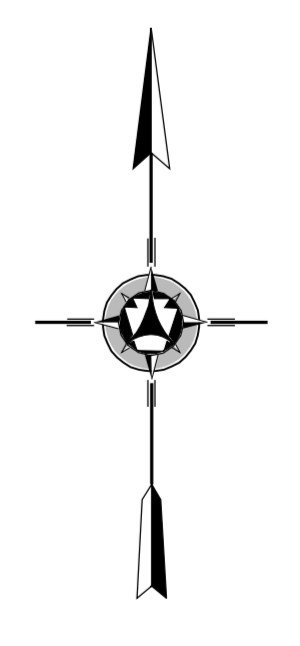
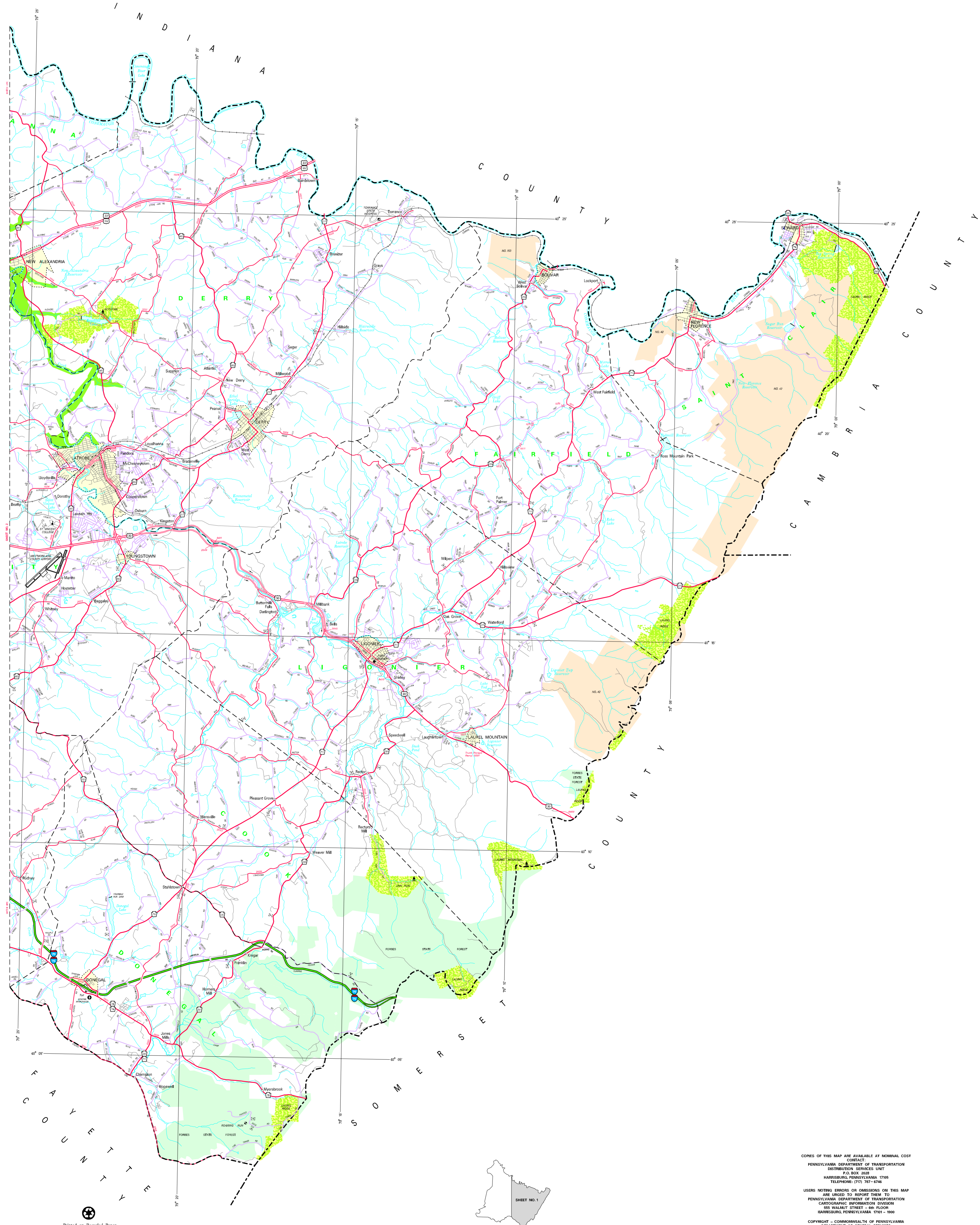


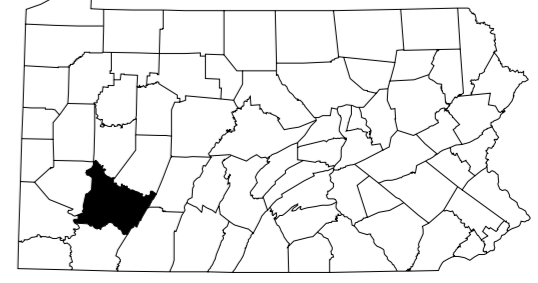
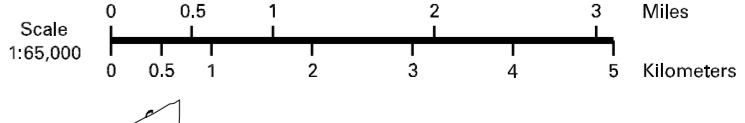
LEGEND	
EXPRESSWAY - ACCESS FULLY CONTROLLED	
INTERSTATE HIGHWAY	
TRAFFIC ROUTE	
ROADWAY STATE ROAD AND HIGHWAY	
STATE HIGHWAY	
TOWNSHIP ROAD	
TOWNSHIP ROAD (UNPAVED)	
OTHER ROAD	
INTERSTATE INTERCHANGE NUMBER	
INTERSTATE TRAFFIC ROUTE	
UNITED STATES TRAFFIC ROUTE	
FOREIGN TRAFFIC ROUTE	
RAILROAD IN SERVICE	
RAILROAD ABANDONED (SPRINKLE RETIRED)	
STATE LINE	
COUNTY LINE	
TOWNSHIP LINE	
INCORPORATED BOROUGH	
INCORPORATED CITY	
STATE CAPITAL	
COUNTY SEAT	
OTHER COMMUNITIES	
COLLEGE OR UNIVERSITY	
STATE POST FACILITY	
STATE HISTORICAL MONUMENT	
FEDERAL STATE INSTITUTION	
FARM COTTAGE	
FARM HOUSE	
FARM RICE TRACT	
RESORT	
REST AREA AND COMFORT FACILITY	
RECREATION CENTER AND COMFORT FACILITY	
STATE FISH HATCHERY	
STATE FOREST NURSERY AREA	
STATE FOREST RANGE AREA	
FEDERAL RESERVATION (S)	
STATE PARK LAND - HEADQUARTERS	
STATE GAME LAND AND NUMBER	
STATE AND FEDERAL FOREST LAND	
FEDERAL PARK - RECREATION LAND	
FEDERAL RESERVATION	



1995
GENERAL HIGHWAY MAP
WESTMORELAND COUNTY
PENNSYLVANIA

DEPARTMENT OF TRANSPORTATION
CARTOGRAPHIC INFORMATION DIVISION

IN COOPERATION WITH THE
U.S. DEPARTMENT OF TRANSPORTATION
FEDERAL HIGHWAY ADMINISTRATION



COPIES OF THIS MAP ARE AVAILABLE AT NOMINAL COST
CONTACT:
PENNSYLVANIA DEPARTMENT OF TRANSPORTATION
CARTOGRAPHIC SERVICES UNIT
P.O. BOX 3088
HARRISBURG, PENNSYLVANIA 17165
TELEPHONE: (717) 767-5746

USERS NOTING ERRORS OR OMISSIONS ON THIS MAP
ARE URGED TO REPORT THEM TO
PENNSYLVANIA DEPARTMENT OF TRANSPORTATION
CARTOGRAPHIC INFORMATION DIVISION
835 WALNUT STREET - 8th FLOOR
HARRISBURG, PENNSYLVANIA 17101-1846

COPYRIGHT - COMMONWEALTH OF PENNSYLVANIA
DEPARTMENT OF GENERAL SERVICES



POPULATION OF COUNTY 1990 Census.....370,321
AREA OF COUNTY (SQ. MI.).....1,025
(SQ. MI.).....6,085

PRINTED ON RECYCLED PAPER