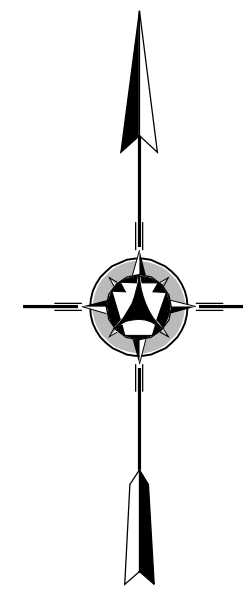
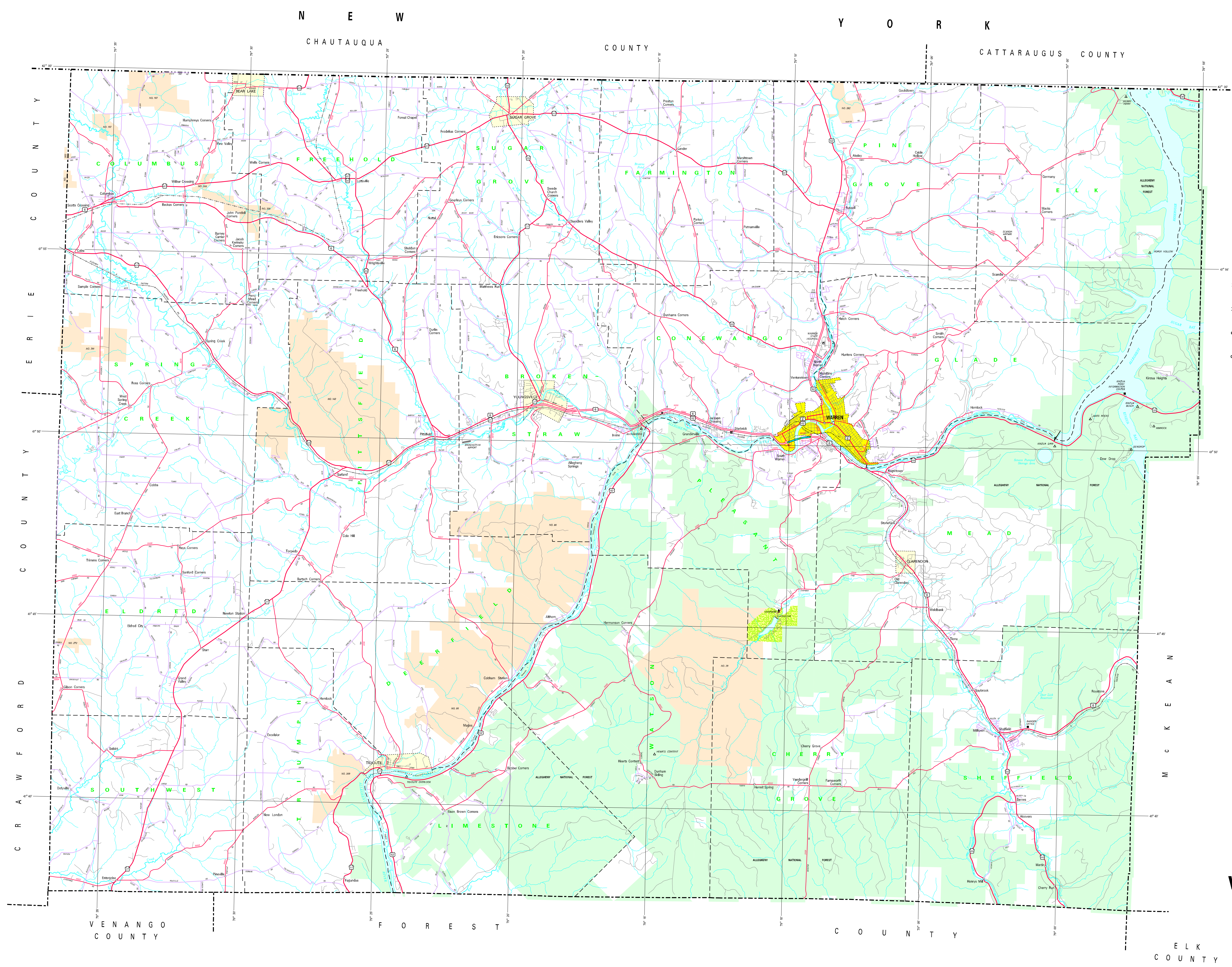
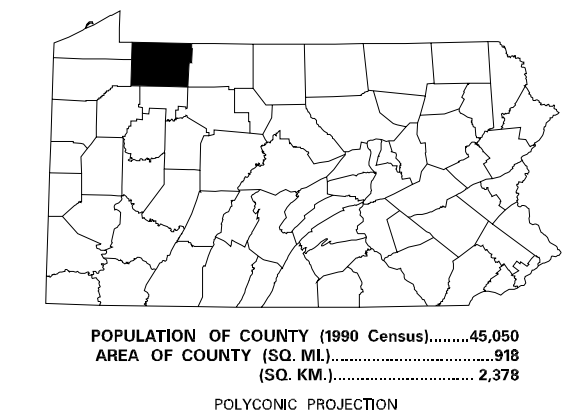
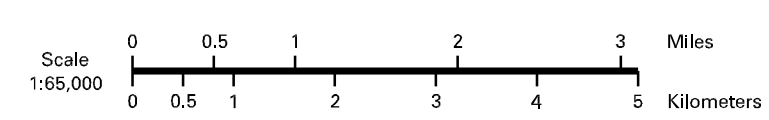


- LEGEND**
- EXPRESSWAY - ACCESS FULLY CONTROLLED
 - EXPRESSWAY - ACCESS PARTIALLY CONTROLLED
 - TRUCK ROUTE
 - STATE HIGHWAY
 - STATE UNIMPROVED ROAD
 - TOWNSHIP ROAD
 - TOWNSHIP ROAD (PRIVATE UNIMPROVED)
 - OTHER ROAD
 - UNIMPROVED ROAD
 - INTERSECTION TRAFFIC SIGNAL
 - UNIMPROVED TRAFFIC SIGNAL
 - PENNSYLVANIA TRAFFIC ROUTE
 - RAILROAD IN SERVICE
 - RAILROAD ABANDONED (TRACK REMAINS)
 - STATE LINE
 - COUNTY LINE
 - TOWNSHIP LINE
 - INCORPORATED CITY
 - INCORPORATED BOROUGH
 - STATE CAPITAL
 - COUNTY SEAT
 - OTHER COMMUNITIES
 - COLLEGE OR UNIVERSITY
 - STATE POLICE FACILITY
 - STATE ADMINISTERED HISTORIC PROPERTY
 - FEDERAL, STATE, NATIONAL
 - FOUNTS OF INTEREST
 - HISTORIC
 - REST AREA AND CONCRETE FACILITY
 - WELCOME CENTER AND CONCRETE FACILITY
 - STATE FISH HATCHERY
 - STATE FOREST NATURAL AREA
 - STATE GREAT PLAINS AREA
 - FEDERAL RECREATION SITE
 - STATE PARK LAND - HEADQUARTERS
 - STATE PARK LAND - HEADQUARTERS
 - STATE AND FEDERAL FOREST LAND
 - FEDERAL PARK - RECREATION LAND
 - FEDERAL RESERVATION



1995
GENERAL HIGHWAY MAP
WARREN COUNTY
PENNSYLVANIA

PREPARED BY THE
 PENNSYLVANIA DEPARTMENT OF TRANSPORTATION
 CARTOGRAPHIC INFORMATION DIVISION
 IN COOPERATION WITH THE
 U.S. DEPARTMENT OF TRANSPORTATION
 FEDERAL HIGHWAY ADMINISTRATION



POPULATION OF COUNTY 1990 Census.....45,850
 AREA OF COUNTY 1990 Census.....218
 800 SQ. MILES.....2,218
 POLYKONE PROJECTION

COPIES OF THIS MAP ARE AVAILABLE AT NOMINAL COST
 CONTACT:
 PENNSYLVANIA DEPARTMENT OF TRANSPORTATION
 DISTRIBUTION SERVICES UNIT
 P.O. BOX 2028
 HARRISBURG, PENNSYLVANIA 17105
 TELEPHONE: (717) 787-6746

USERS MUST BEWARE OF OVERPRINTS ON THIS MAP
 ARE URGED TO REPORT THEM TO
 PENNSYLVANIA DEPARTMENT OF TRANSPORTATION
 CARTOGRAPHIC INFORMATION DIVISION
 100 WALKER STREET - 6TH FLOOR
 HARRISBURG, PENNSYLVANIA 17101 - 1990
 COPYRIGHT - COMMONWEALTH OF PENNSYLVANIA
 DEPARTMENT OF GENERAL SERVICES