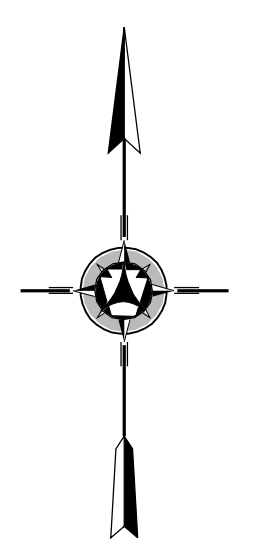
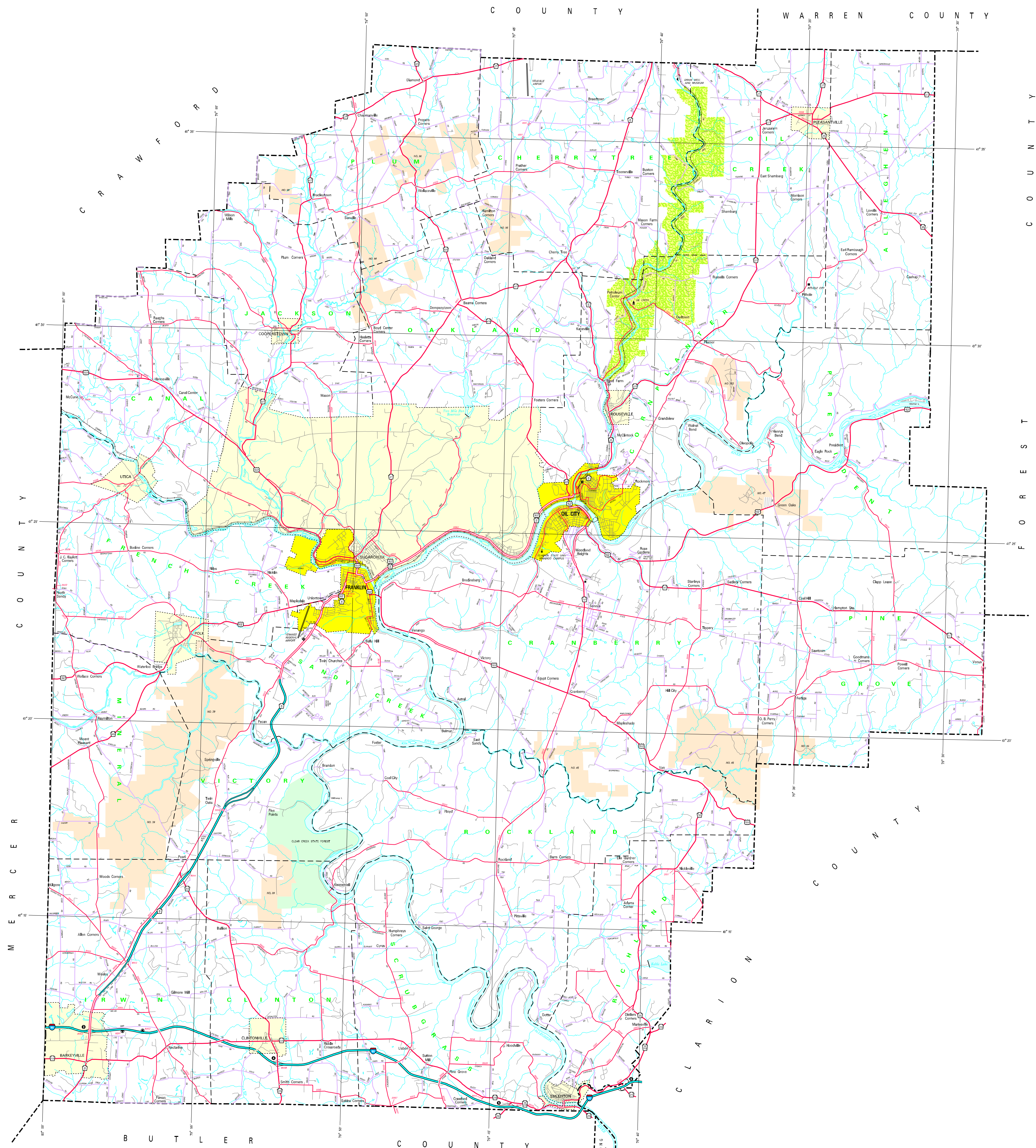
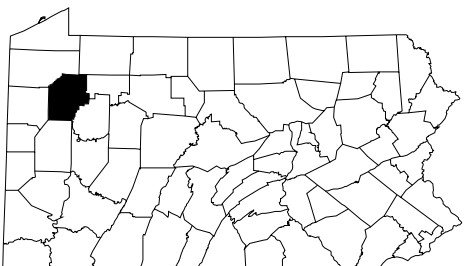
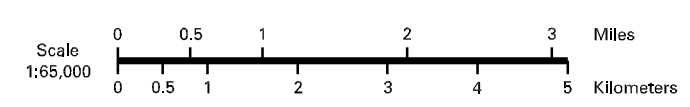


- LEGEND**
- EXPRESSWAY - ACCESS RAMP CONTROLLED
 - MULTI LANE HIGHWAY
 - TRUCK ROUTE
 - HOV-3 STATE ROAD AND HIGHWAY
 - STATE MAINTAINED BRIDGE
 - TOWNSHIP ROAD
 - TOWNSHIP ROAD (IMPROVED)
 - OTHER ROAD
 - INTERSTATE MILEAGE NUMBER
 - INTERSTATE TRUCK ROUTE
 - UNITED STATES FURNACE BRIDGE
 - PROVISIONAL TRUCK ROUTE
 - RAILROAD BY SERVICE
 - RAILROAD ABANDONED TRACK REMAINS
 - STATE LINE
 - COUNTY LINE
 - TOWNSHIP LINE
 - INCORPORATED CITY
 - INCORPORATED BOROUGH
 - STATE CAPITAL
 - COUNTY SEAT
 - OTHER TOWNSHIP
 - COLLEGE OR UNIVERSITY
 - STATE POLICE FACILITY
 - STATE CORRECTIONAL INSTITUTE
 - FEDERAL / STATE RESTROOMS
 - POW OF FACILITY
 - POINTS OF INTEREST
 - HORSE WALK TRACK
 - RECREATION
 - HUNT AREA AND COMFORT FACILITY
 - VILLAGE CENTER AND COMFORT FACILITY
 - STATE AND FEDERAL LAND
 - STATE FOREST NATURAL AREA
 - STATE FOREST FISHING AREA
 - FEDERAL RESERVATION
 - STATE PARK LAND HEADQUARTERS
 - STATE GAME LAND AND WATER
 - STATE AND FEDERAL FOREST LAND
 - FEDERAL PARK RECREATION LAND
 - FEDERAL RESERVATION



1997
 GENERAL HIGHWAY MAP
VENANGO COUNTY
 PENNSYLVANIA

PREPARED BY THE
 PENNSYLVANIA DEPARTMENT OF TRANSPORTATION
 CARTOGRAPHIC INFORMATION DIVISION
 IN COOPERATION WITH THE
 U.S. DEPARTMENT OF TRANSPORTATION
 FEDERAL HIGHWAY ADMINISTRATION



POPULATION OF COUNTY 1990 Census 93,381
 AREA OF COUNTY 1990 Census 662
 (SQ. KM) 1,706
 POLYCONIC PROJECTION

COPIES OF THIS MAP ARE AVAILABLE AT NOMINAL COST
 CONTACT
 PENNSYLVANIA DEPARTMENT OF TRANSPORTATION
 DISTRIBUTION SERVICES UNIT
 P.O. BOX 2052
 HARRISBURG, PENNSYLVANIA 17103
 TELEPHONE (717) 787-2746
 USERS NOTING ERRORS OR OMISSIONS ON THIS MAP
 ARE REQUESTED TO REPORT THEM TO:
 PENNSYLVANIA DEPARTMENT OF TRANSPORTATION
 CARTOGRAPHIC INFORMATION DIVISION
 309 WALNUT STREET - 8th FLOOR
 HARRISBURG, PENNSYLVANIA 17102
 COPYRIGHT - COMMONWEALTH OF PENNSYLVANIA
 DEPARTMENT OF GENERAL SERVICES

Printed on Recycled Paper