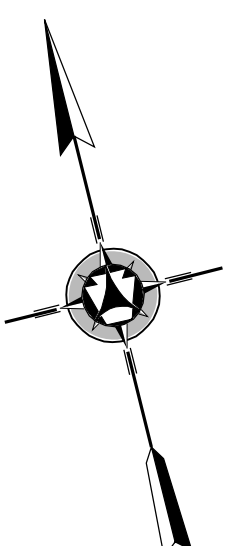
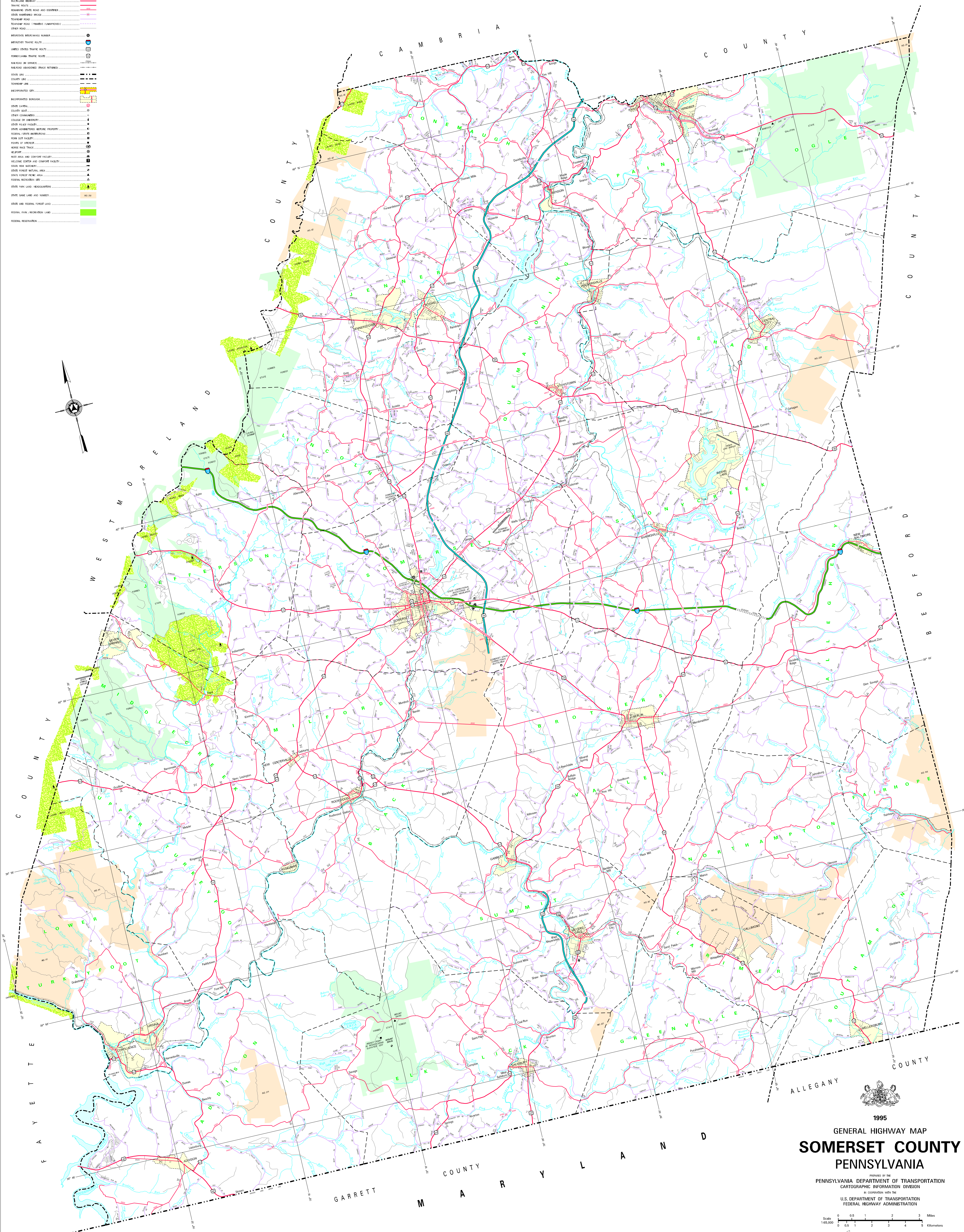
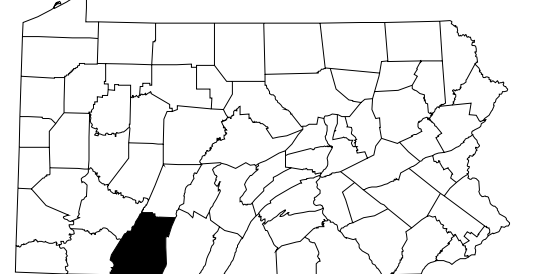
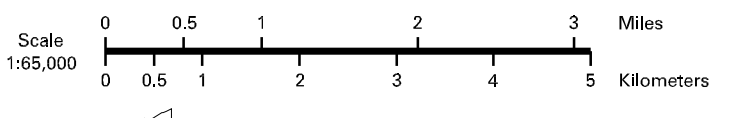


- LEGEND**
- EXTRANEY - ACCESS RILLY CONTROLLED
 - MULTI-LINE HIGHWAY
 - THRUWAY ROUTE
 - ROADWAY STATE ROAD AND ROUTES
 - STATE MAINTAINED BRIDGE
 - TOWNSHIP ROAD
 - TOWNSHIP ROAD (PENDING CANCELLATION)
 - OTHER ROAD
 - INTERSTATE BENCHMARK NUMBER
 - INTERSTATE TRAVEL ROUTE
 - UNITED STATES TRAVEL ROUTE
 - PENNSYLVANIA TRAVEL ROUTE
 - RAILROAD IN SERVICE
 - RAILROAD ABANDONED (TRACK REMOVED)
 - STATE LINE
 - COUNTY LINE
 - TOWNSHIP LINE
 - INCORPORATED BOROUGH
 - STATE CAPITAL
 - COUNTY SEAT
 - CITY
 - COLLEGE OR UNIVERSITY
 - STATE POLICE FACILITY
 - STATE GUARDHOUSE (NOTICE PROPERTY)
 - FEDERAL STATE INSTITUTION
 - PENN DOT FACILITY
 - POSSIBLE TRAIL
 - WATER
 - WATER AREA AND CONCRETE FACILITY
 - WATER CENTER AND CONCRETE FACILITY
 - STATE FOREST NATURAL AREA
 - FEDERAL RECREATION SITE
 - STATE GAME LAND AND NUMBER
 - STATE AND FEDERAL FOREST LAND
 - FEDERAL PARK / RECREATION LAND
 - FEDERAL RESERVATION



1995
GENERAL HIGHWAY MAP
SOMERSET COUNTY
PENNSYLVANIA

PREPARED BY THE
 PENNSYLVANIA DEPARTMENT OF TRANSPORTATION
 CARTOGRAPHIC INFORMATION DIVISION
 IN COOPERATION WITH THE
 U.S. DEPARTMENT OF TRANSPORTATION
 FEDERAL HIGHWAY ADMINISTRATION



COPIES OF THIS MAP ARE AVAILABLE AT NOMINAL COST
 CONTACT:
 PENNSYLVANIA DEPARTMENT OF TRANSPORTATION
 CARTOGRAPHIC SERVICES UNIT
 P.O. BOX 2008
 HARRISBURG, PENNSYLVANIA 17105
 TELEPHONE (717) 787-6740

USERS NOTING ERRORS OR OMISSIONS ON THIS MAP
 ARE URGED TO REPORT THEM TO:
 PENNSYLVANIA DEPARTMENT OF TRANSPORTATION
 CARTOGRAPHIC INFORMATION DIVISION
 305 HENRY STREET - 4th FLOOR
 HARRISBURG, PENNSYLVANIA 17101 - 1900

COPYRIGHT - COMMONWEALTH OF PENNSYLVANIA
 DEPARTMENT OF GENERAL SERVICES

POPULATION OF COUNTY 1990 Census: 74,200
 AREA OF COUNTY (SQ. MI.): 720
 (SQ. MI.): 2,200
 POLYCONIC PROJECTION