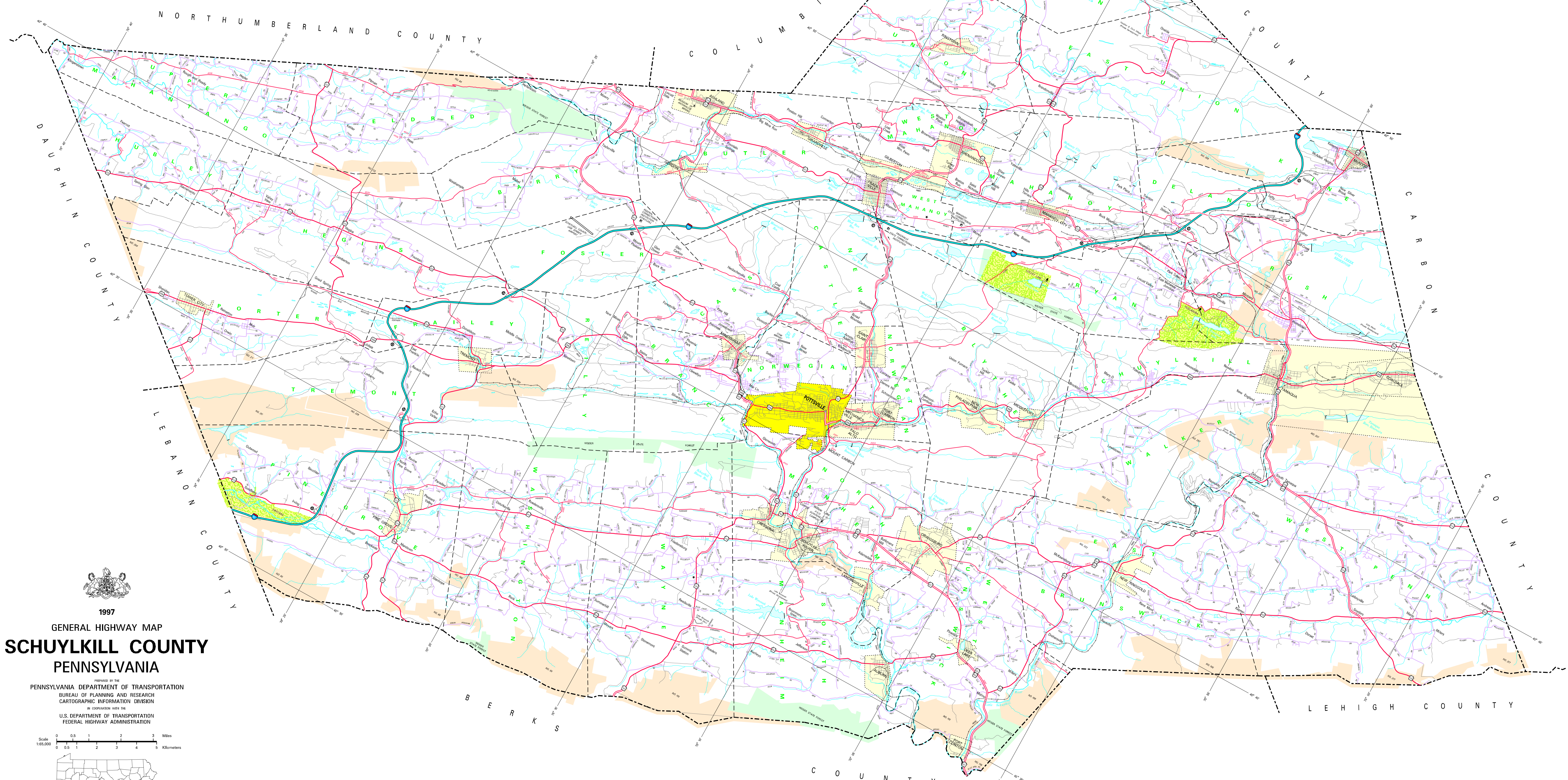
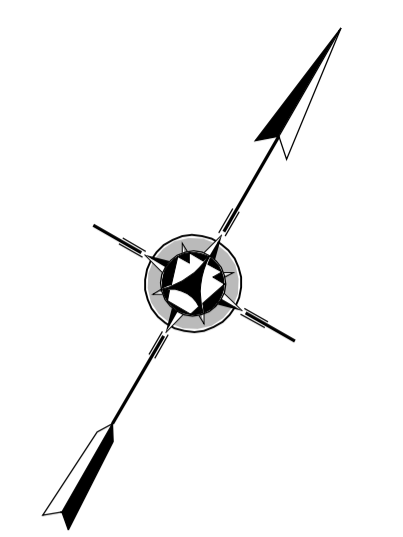


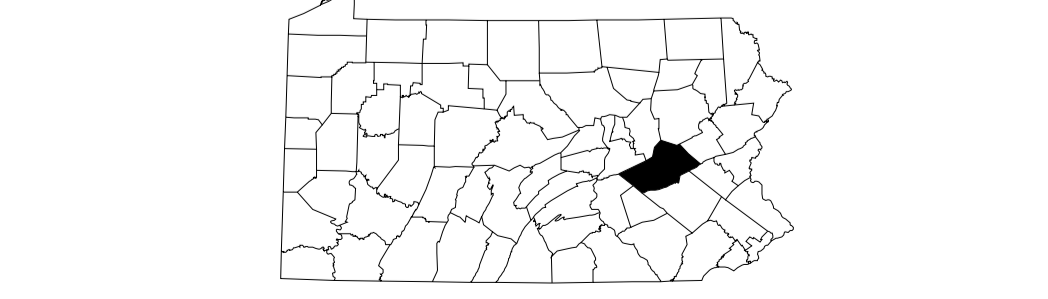
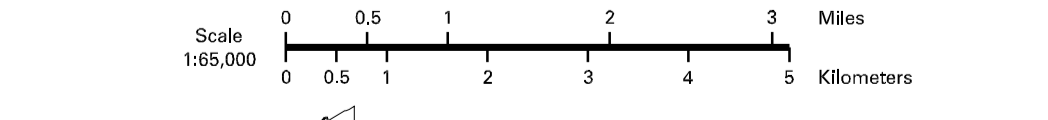
- LEGEND**
- EXPRESSWAY - ACCESS FULLY CONTROLLED
 - MULTILANE HIGHWAY
 - STATE ROUTE
 - HOV-3 ROUTE
 - STATE MAINTAINED BRIDGE
 - TOWNSHIP ROAD
 - TOWNSHIP ROAD (PAVED UNIMPROVED)
 - OTHER ROAD
 - INTERSTATE INTERCHANGE NUMBER
 - INTERSTATE TRUCK ROUTE
 - LIMITED ACCESS TRUCK ROUTE
 - NONLIMITED ACCESS TRUCK ROUTE
 - RAILROAD BY SERVICE
 - RAILROAD ADVANCED TRACK (STANDARD)
 - STATE LINE
 - COUNTY LINE
 - TOWNSHIP LINE
 - INCORPORATED CITY
 - INCORPORATED BOROUGH
 - STATE CAPITAL
 - COUNTY SEAT
 - OTHER CONCENTRATED
 - COLLEGE OR UNIVERSITY
 - STATE ROAD FACILITY
 - STATE ACQUIRED HISTORIC PROPERTY
 - FEDERAL STATE BUILDINGS
 - POWER PLANT FACILITY
 - POINTS OF INTEREST
 - WATER PUMP FACILITY
 - REST AREA AND COMFORT FACILITY
 - WILSON CENTER AND COMFORT FACILITY
 - STATE TRAIL
 - STATE FOREST NATURAL AREA
 - STATE TRAIL NATURAL AREA
 - FEDERAL RECREATION SITE
 - STATE PARK LAND (TRAILCAMPERS)
 - STATE GAME LAND AND NUMBER
 - STATE AND FEDERAL FOREST LAND
 - FEDERAL PARK (RECREATION LAND)
 - FEDERAL RESERVATION



1997
GENERAL HIGHWAY MAP
SCHUYLKILL COUNTY
PENNSYLVANIA

PREPARED BY THE
PENNSYLVANIA DEPARTMENT OF TRANSPORTATION
 BUREAU OF PLANNING AND RESEARCH
 CARTOGRAPHIC INFORMATION DIVISION

IN COOPERATION WITH THE
U.S. DEPARTMENT OF TRANSPORTATION
 FEDERAL HIGHWAY ADMINISTRATION



POPULATION OF COUNTY (1990 Census) 122,585
 AREA OF COUNTY (SQ. MI.) 783
 POLYCONIC PROJECTION

COPIES OF THIS MAP ARE AVAILABLE AT NOMINAL COST
 CONTACT:
 PENNSYLVANIA DEPARTMENT OF TRANSPORTATION
 CARTOGRAPHIC INFORMATION DIVISION
 P.O. BOX 2008
 HARRISBURG, PENNSYLVANIA 17104
 TELEPHONE (717) 787-8246

USERS NOTING ERRORS OR OMISSIONS ON THIS MAP
 ARE REQUESTED TO REPORT THEM TO:
 PENNSYLVANIA DEPARTMENT OF TRANSPORTATION
 CARTOGRAPHIC INFORMATION DIVISION
 100 BELMONT STREET - 4th FLOOR
 HARRISBURG, PENNSYLVANIA 17101-1900

COPYRIGHT - COMMONWEALTH OF PENNSYLVANIA
 DEPARTMENT OF GENERAL SERVICES