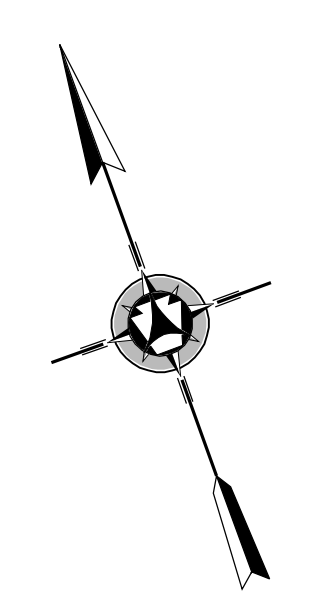
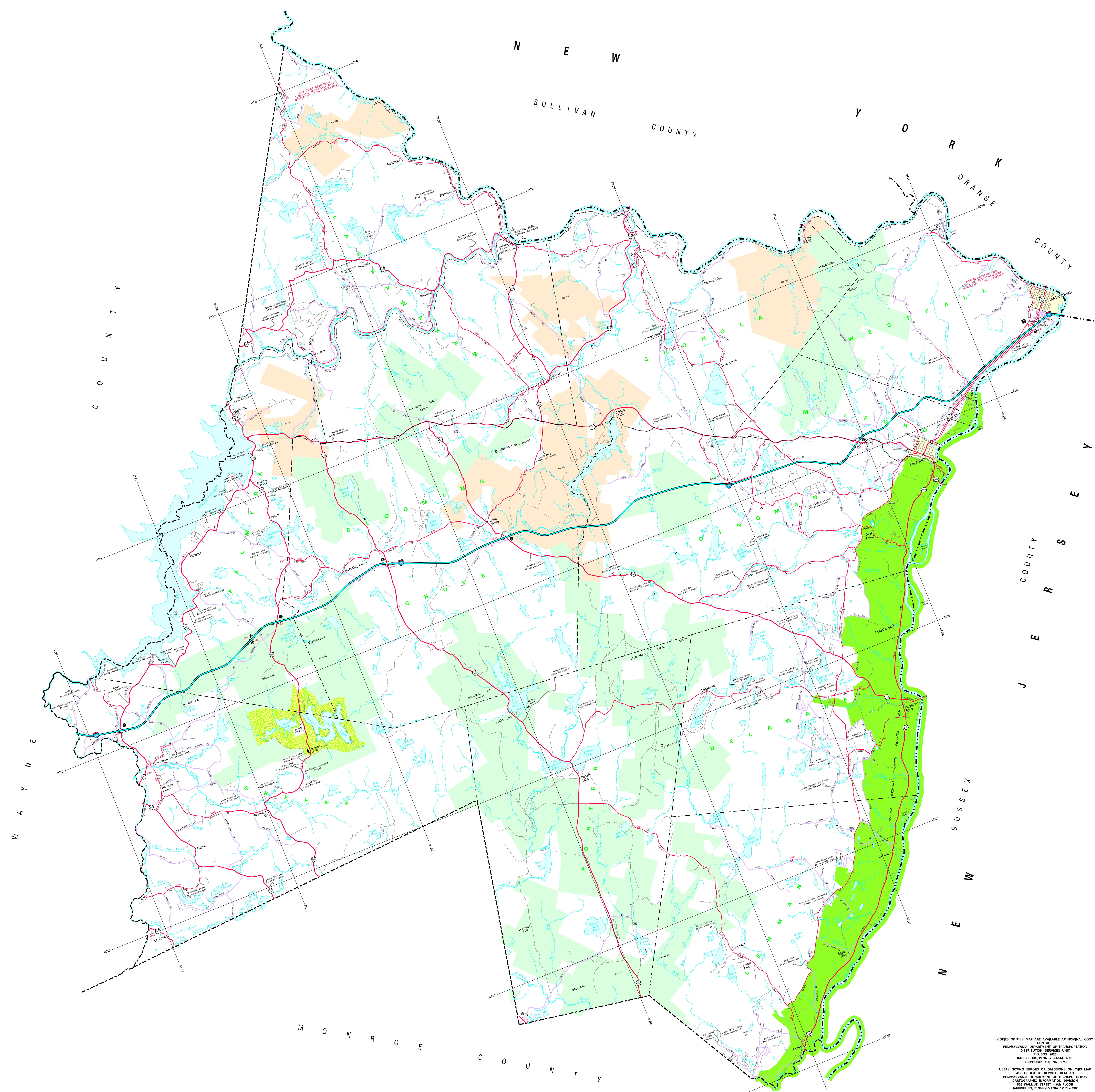


- LEGEND**
- EXPRESSWAY - ACCESS FULLY CONTROLLED
  - INTERSTATE
  - STATE ROUTE
  - UNIMPAVED STATE ROAD AND CENTER
  - STATE HIGHWAY BRIDGE
  - TOWNSHIP ROAD
  - TOWNSHIP ROAD (PAVED/UNPAVED)
  - OTHER ROAD
  - INTERSTATE INTERCHANGING NUMBER
  - INTERSTATE TRAFFIC ROUTE
  - UNITED STATES TRAFFIC ROUTE
  - CONVENTIONAL TRAFFIC ROUTE
  - PAVING BY DISTRICT
  - PAVING ADVANCED TRAILS RETAINED
  - STATE LINE
  - COUNTY LINE
  - TOWNSHIP LINE
  - INCORPORATED BOROUGH
  - STATE CAPITAL
  - COUNTY SEAT
  - OTHER COMMUNITY
  - COLLEGE OR UNIVERSITY
  - STATE POLICE FACILITY
  - CENOTAPH
  - STATE ADMINISTERED HERBIC PROPERTIES
  - FEDERAL STATE WETLANDS
  - FISH GUT FACILITY
  - POWER OF INTEREST
  - HOUSE AND TRAIL
  - HELIPORT
  - REST AREA AND SERVICE FACILITY
  - WILSONS CENTER AND SERVICE FACILITY
  - STATE HIGHWAY
  - STATE HIGHWAY
  - STATE FOREST PLANTING AREA
  - FEDERAL RECREATION SITE
  - STATE PARK LAND (HEADQUARTERS)
  - STATE GAME LAND AND NUMBER
  - STATE AND FEDERAL FOREST LAND
  - FEDERAL PARK - RECREATION LAND
  - FEDERAL RESERVATION

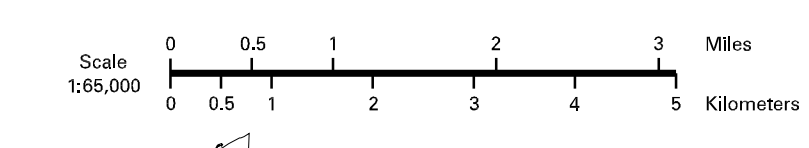
ONLY PRIVATE DEVELOPMENTS OF 100 LOTS OR LARGER ARE SHOWN ON THIS MAP



1998  
**GENERAL HIGHWAY MAP**  
**PIKE COUNTY**  
**PENNSYLVANIA**

PREPARED BY THE  
**PENNSYLVANIA DEPARTMENT OF TRANSPORTATION**  
 BUREAU OF PLANNING AND RESEARCH  
 CARTOGRAPHIC INFORMATION DIVISION

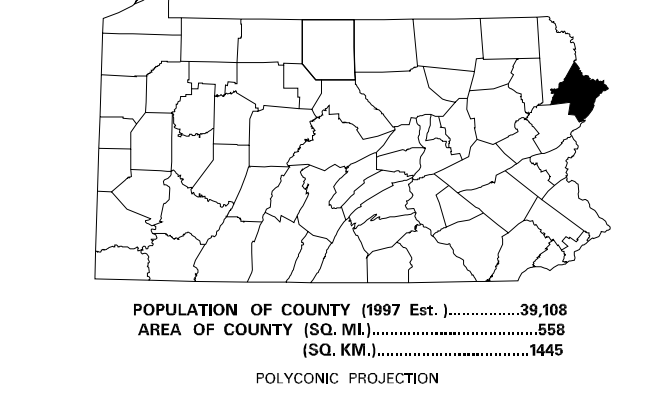
IN COOPERATION WITH THE  
 U.S. DEPARTMENT OF TRANSPORTATION  
 FEDERAL HIGHWAY ADMINISTRATION



COPIES OF THIS MAP ARE AVAILABLE AT NOMINAL COST  
 CONTACT:  
 PENNSYLVANIA DEPARTMENT OF TRANSPORTATION  
 DISTRIBUTION SERVICES UNIT  
 HARRISBURG, PENNSYLVANIA 17109  
 TELEPHONE: (717) 787-8748

USERS NOTING ERRORS OR OMISSIONS ON THIS MAP  
 ARE URGED TO REPORT THEM TO:  
 PENNSYLVANIA DEPARTMENT OF TRANSPORTATION  
 CARTOGRAPHIC INFORMATION DIVISION  
 500 WALNUT STREET - 4th FLOOR  
 HARRISBURG, PENNSYLVANIA 17101 - 1600

COPYRIGHT - COMMONWEALTH OF PENNSYLVANIA  
 DEPARTMENT OF GENERAL SERVICES



POPULATION OF COUNTY 1997 Est. .... 26,388  
 AREA OF COUNTY (SQ. MI.) ..... 488  
 (SQ. KM.) ..... 1260  
 POLYCONIC PROJECTION