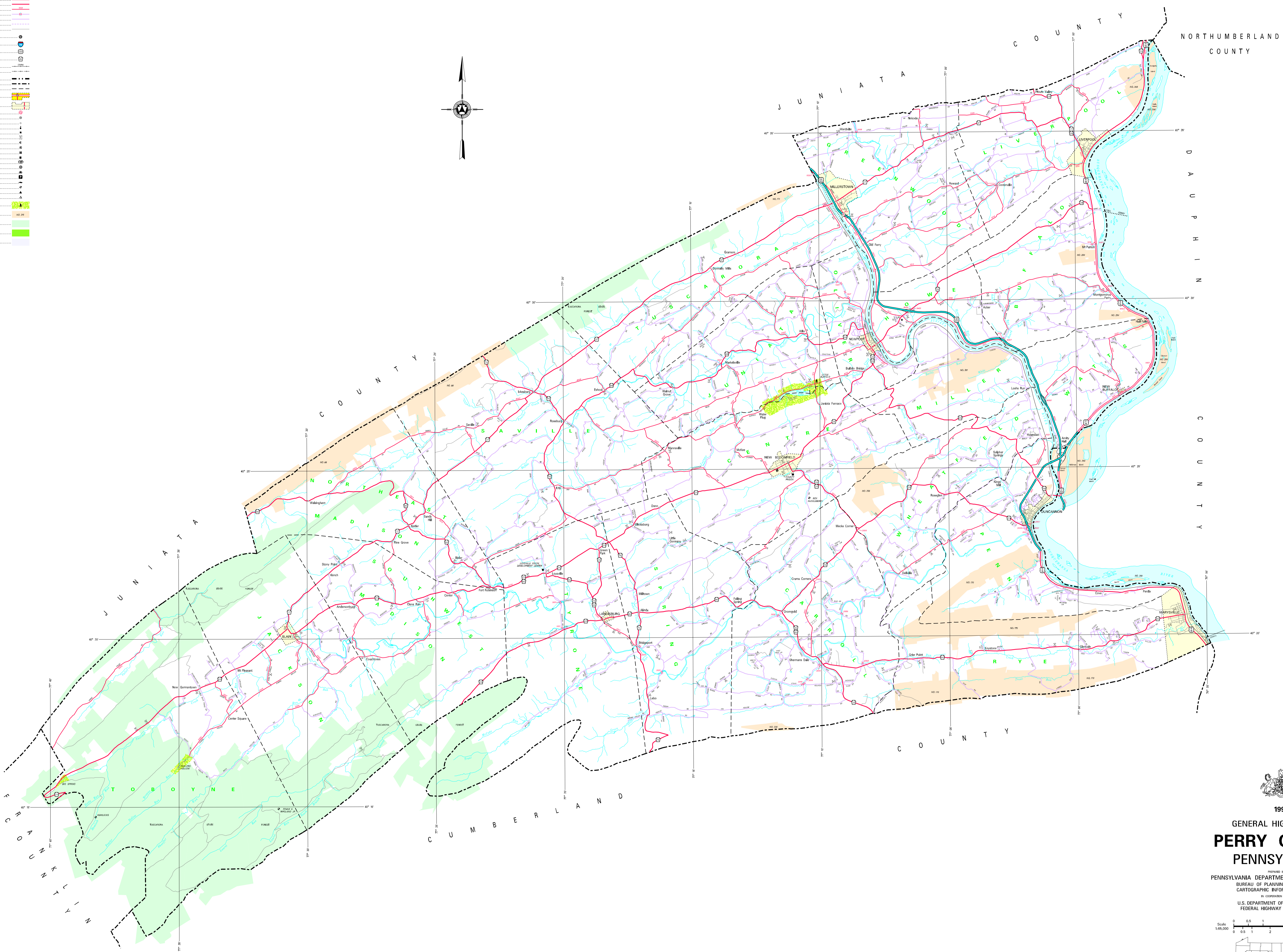
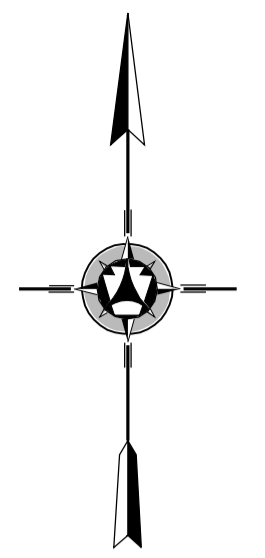


- LEGEND**
- EXPRESSWAY - ACCESS FULLY CONTROLLED
 - MULTI-LANE HIGHWAY
 - TRUNK ROUTE
 - PAVING STATE ROAD AND HIGHWAY
 - STATE MAINTAINED BRIDGE
 - TOWNSHIP ROAD
 - TOWNSHIP ROAD (PAVING UNBUNDLED)
 - OTHER ROAD
 - INTERSTATE INTERCHANGE NUMBER
 - INTERSTATE TRAFFIC ROUTE
 - STATE TRUCK ROUTE
 - FEDERAL TRUCK ROUTE
 - RAILROAD BY HIGHWAY
 - RAILROAD ABANDONED TRACK REMAINS
 - STATE LINE
 - COUNTY LINE
 - TOWNSHIP LINE
 - INCORPORATED CITY
 - INCORPORATED BOROUGH
 - STATE CAPITAL
 - COUNTY SEAT
 - OTHER COMMUNITY
 - CITY OF UNIVERSITY
 - STATE POLICE FACILITY
 - COURT
 - STATE ADMINISTERED HISTORIC PROPERTY
 - FEDERAL STATE HISTORIC
 - PARK, NOT A STATE
 - POWERS OF PROTEST
 - STATE FACE TRACK
 - AIRPORT
 - PILOT AREA AND CONCRETE FACILITY
 - MILITARY CENTER AND CONCRETE FACILITY
 - STATE FISH HATCHERY
 - STATE FOREST WARDEN AREA
 - STATE FOREST WARDEN AREA
 - FEDERAL RECREATION SITE
 - STATE PARK LAND - HEADQUARTERS
 - STATE GAME LAND AND HARBOR
 - STATE AND FEDERAL FOREST LAND
 - FEDERAL PARK RECREATION LAND
 - FEDERAL STATE RESERVATION



NORTHUMBERLAND COUNTY

D A U P H I N C O U N T Y

J U N I A T A C O U N T Y

C O A K N T Y

C U M B E R L A N D

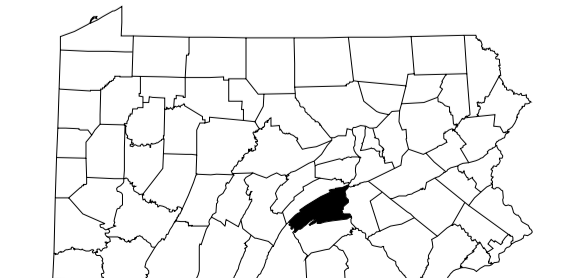
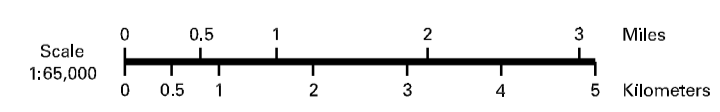
C O U N T Y



1998
GENERAL HIGHWAY MAP
PERRY COUNTY
PENNSYLVANIA

PREPARED BY THE
 PENNSYLVANIA DEPARTMENT OF TRANSPORTATION
 BUREAU OF PLANNING AND RESEARCH
 CARTOGRAPHIC INFORMATION DIVISION

BY COOPERATION WITH THE
 U.S. DEPARTMENT OF TRANSPORTATION
 FEDERAL HIGHWAY ADMINISTRATION



POPULATION OF COUNTY, 1997 EST. - 44,364
 AREA OF COUNTY (SQ. MI.) - 1,361
 (SQ. KM.) - 3,532
 POLYCONIC PROJECTION

COPIES OF THIS MAP ARE AVAILABLE AT NOMINAL COST
 COUNTY:
 PENNSYLVANIA DEPARTMENT OF TRANSPORTATION
 DISTRIBUTION SERVICES UNIT
 P.O. BOX 3020
 HARRISBURG, PENNSYLVANIA 17105
 TELEPHONE: (717) 797-4348

USERS NOTING ERRORS OR OMISSIONS ON THIS MAP
 ARE URGED TO REPORT THEM TO:
 PENNSYLVANIA DEPARTMENT OF TRANSPORTATION
 CARTOGRAPHIC INFORMATION DIVISION
 926 WALNUT STREET - 8TH FLOOR
 HARRISBURG, PENNSYLVANIA 17101 - 1900

COPYRIGHT - COMMONWEALTH OF PENNSYLVANIA
 DEPARTMENT OF GENERAL SERVICES