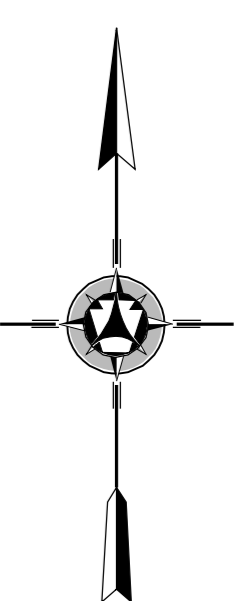
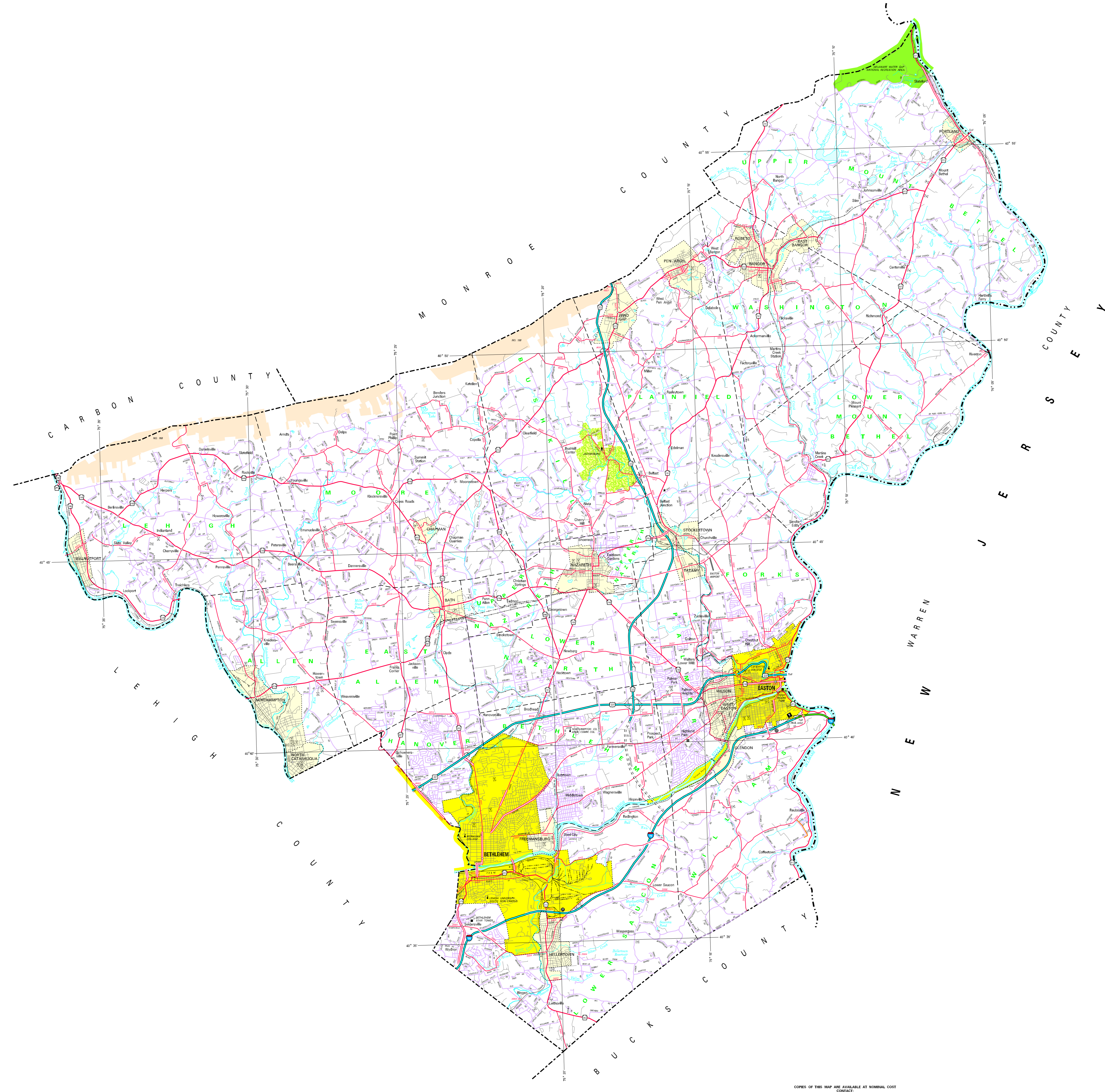


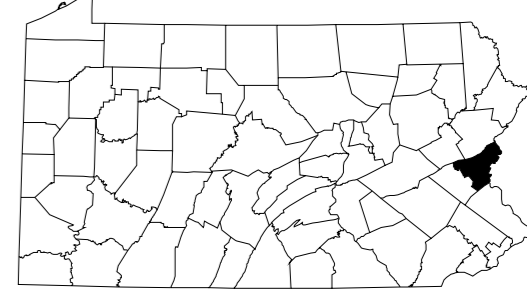
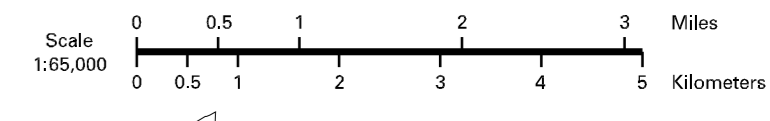
- LEGEND**
- EXPRESSWAY - ACCESS RAMP CONTROLLED
 - MULTILANE HIGHWAY
 - TRAILING ROUTE
 - ROADWAY WITH ROAD AND FOOTPATH
 - STATE MAINTAINED BRIDGE
 - TOWNSHIP ROAD
 - TOWNSHIP ROAD (UNPAVED)
 - OTHER ROAD
 - INTERSTATE INTERCHANGE NUMBER
 - INTERSTATE TRAFFIC ROUTE
 - UNITED STATES TRAFFIC ROUTE
 - PENNSYLVANIA TRAFFIC ROUTE
 - RAILROAD BY SERVICE
 - RAILROAD ADVANCED STATION SERVICES
 - STATE LINE
 - COUNTY LINE
 - TOWNSHIP LINE
 - INCORPORATED CITY
 - INCORPORATED BOROUGH
 - STATE CAPITAL
 - COUNTY SEAT
 - OTHER COMMERCIAL
 - STATE POLICE FACILITY
 - COURT
 - STATE ADMINISTERED HISTORIC PROPERTY
 - FEDERAL STATE HISTORIC PROPERTY
 - FEDERAL STATE INSTITUTION
 - PARK SITE FACILITY
 - POINTS OF INTEREST
 - HEAVY AND ROAD
 - REPORT
 - REST AREA AND CONVICTION FACILITY
 - WISCONSIN STATE AND COUNTY FACILITY
 - STATE FISH WATERSHIP
 - STATE FOREST NATURAL AREA
 - STATE FOREST PLUNG AREA
 - FEDERAL RECREATION SITE
 - STATE PARK LAND - HEADQUARTERS
 - STATE GAME LAND AND NUMBER
 - STATE AND FEDERAL FOREST LAND
 - FEDERAL PARK RECREATION LAND
 - FEDERAL RESERVATION



1998
 GENERAL HIGHWAY MAP
NORTHAMPTON COUNTY
 PENNSYLVANIA

PENNSYLVANIA DEPARTMENT OF TRANSPORTATION
 BUREAU OF PLANNING AND RESEARCH
 CARTOGRAPHIC INFORMATION DIVISION

IN COOPERATION WITH THE
 U.S. DEPARTMENT OF TRANSPORTATION
 FEDERAL HIGHWAY ADMINISTRATION



POPULATION OF COUNTY - 1990 CENSUS - 287,289
 AREA OF COUNTY - 580 SQ. MI. - 37%
 (500,000)
 POLYCONIC PROJECTION

COPIES OF THIS MAP ARE AVAILABLE AT NOMINAL COST
 CONTACT:
 PENNSYLVANIA DEPARTMENT OF TRANSPORTATION
 DISTRIBUTION SERVICES UNIT
 HARRISBURG, PENNSYLVANIA 17105
 TELEPHONE: (717) 787-6746

USERS NOTING ERRORS OR OMISSIONS ON THIS MAP
 ARE URGED TO REPORT THEM TO:
 PENNSYLVANIA DEPARTMENT OF TRANSPORTATION
 CARTOGRAPHIC INFORMATION DIVISION
 605 WALNUT STREET - 4th FLOOR
 HARRISBURG, PENNSYLVANIA 17101 - 1800

COPYRIGHT - COMMONWEALTH OF PENNSYLVANIA
 DEPARTMENT OF GENERAL SERVICES