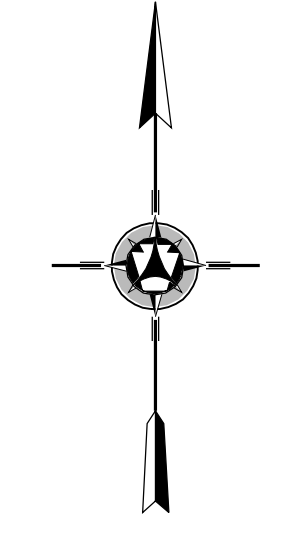
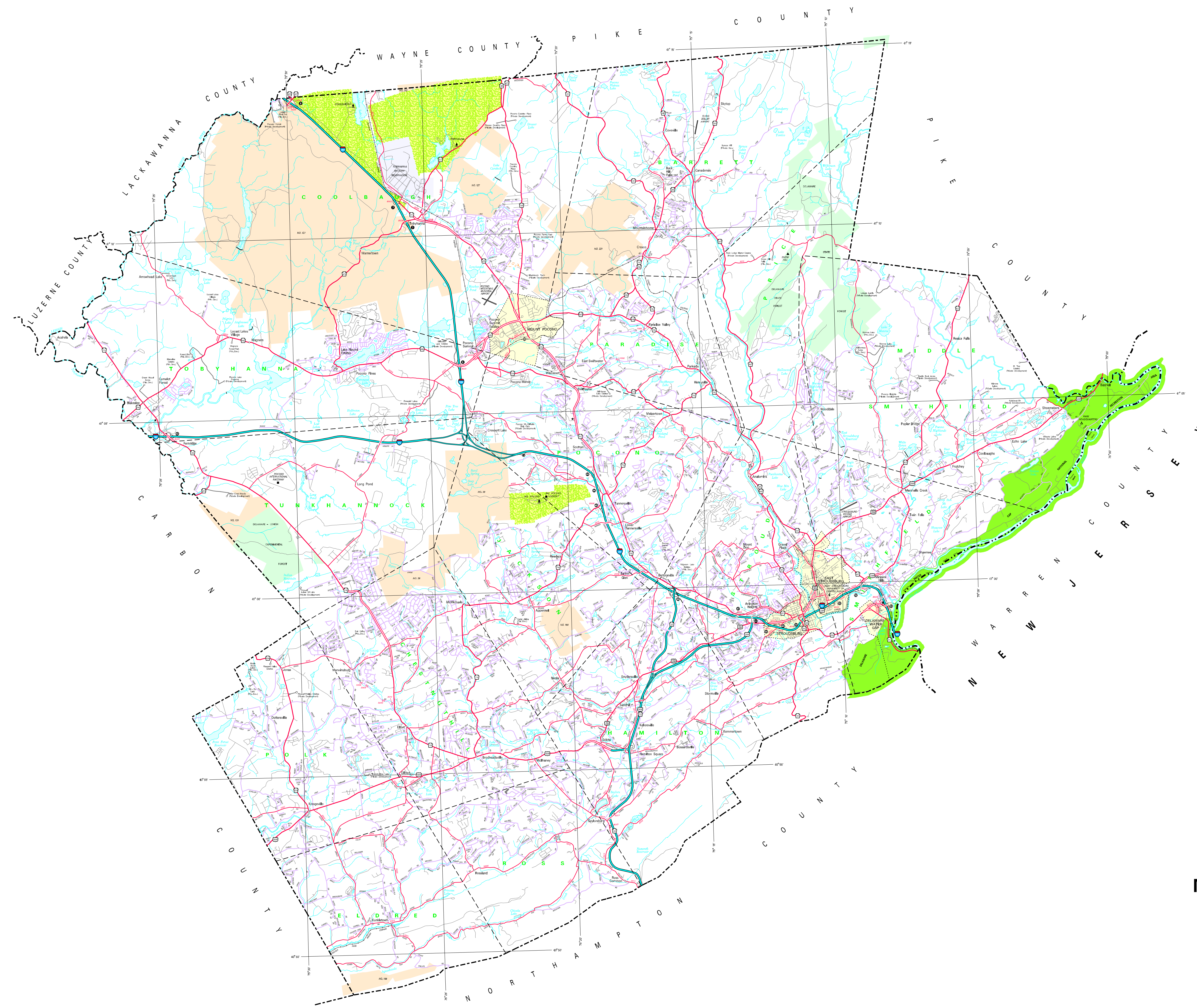


LEGEND

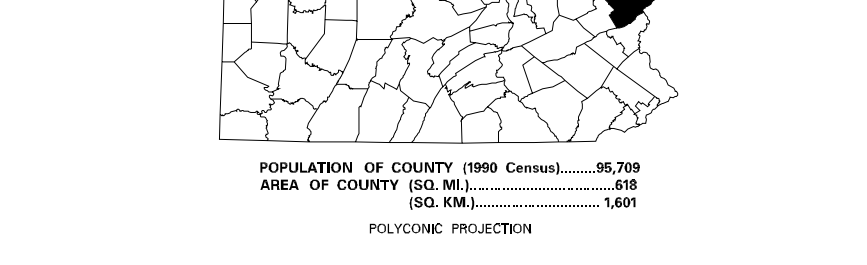
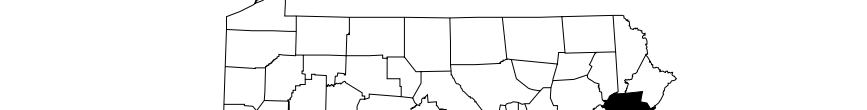
EXPRESSWAY - ACCESS FULLY CONTROLLED	
TRUNK HIGHWAY	
MAINTENANCE ROAD AND SERVICE	
STATE IMPROVED ROAD	
TOWNSHIP ROAD (UNIMPROVED)	
OTHER ROAD	
INTERSTATE HIGHWAY NUMBER	
LIMITED ACCESS TRAFFIC ROUTE	
PERSONAL TRAFFIC ROUTE	
RAILROAD (IN SERVICE)	
RAILROAD ABANDONED TRUCK RETAINED	
STATE LINE	
COUNTY LINE	
TOWNSHIP LINE	
INCORPORATED CITY	
INCORPORATED BOROUGH	
STATE CAPITAL	
COUNTY SEAT	
OTHER COMMUNITIES	
COLLEGE OF UNIVERSITY	
STATE ASSEMBLY DISTRICT	
FEDERAL STATE INSTITUTION	
PARK AND RECREATION	
PLANTS OF INTEREST	
HISTORIC LAND MARK	
RESORT	
REEF AREA AND CONCRETE FACILITY	
WELSH CHURCH AND CONGREGATION	
STATE FISH NETWORK	
STATE FOREST METEORIC AREA	
STATE FOREST FISH AREA	
FEDERAL RECREATION SITE	
STATE PARK LAND - HEADQUARTERS	
STATE GAME LAND AND RESERVE	
STATE AND FEDERAL FOREST LAND	
FEDERAL PARK, RECREATION LAND	
FEDERAL RESERVATION	



1996
 GENERAL HIGHWAY MAP
MONROE COUNTY
 PENNSYLVANIA

PREPARED BY THE
 PENNSYLVANIA DEPARTMENT OF TRANSPORTATION
 CARTOGRAPHIC INFORMATION DIVISION

IN COOPERATION WITH THE
 U.S. DEPARTMENT OF TRANSPORTATION
 FEDERAL HIGHWAY ADMINISTRATION



COPIES OF THIS MAP ARE AVAILABLE AT NOMINAL COST
 CONTACT:
 PENNSYLVANIA DEPARTMENT OF TRANSPORTATION
 DISTRIBUTION SERVICES UNIT
 P.O. BOX 202
 HARRISBURG, PENNSYLVANIA 17105
 TELEPHONE (717) 781-4144

USERS NOTING ERRORS OR OMISSIONS ON THIS MAP
 ARE URGED TO REPORT THEM TO:
 PENNSYLVANIA DEPARTMENT OF TRANSPORTATION
 CARTOGRAPHIC INFORMATION DIVISION
 300 WASHINGTON STREET - 3RD FLOOR
 HARRISBURG, PENNSYLVANIA 17101-1000

COPYRIGHT - COMMONWEALTH OF PENNSYLVANIA
 DEPARTMENT OF GENERAL SERVICES

Printed on Recycled Paper