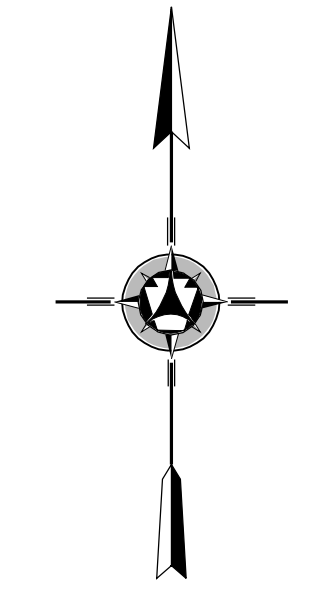
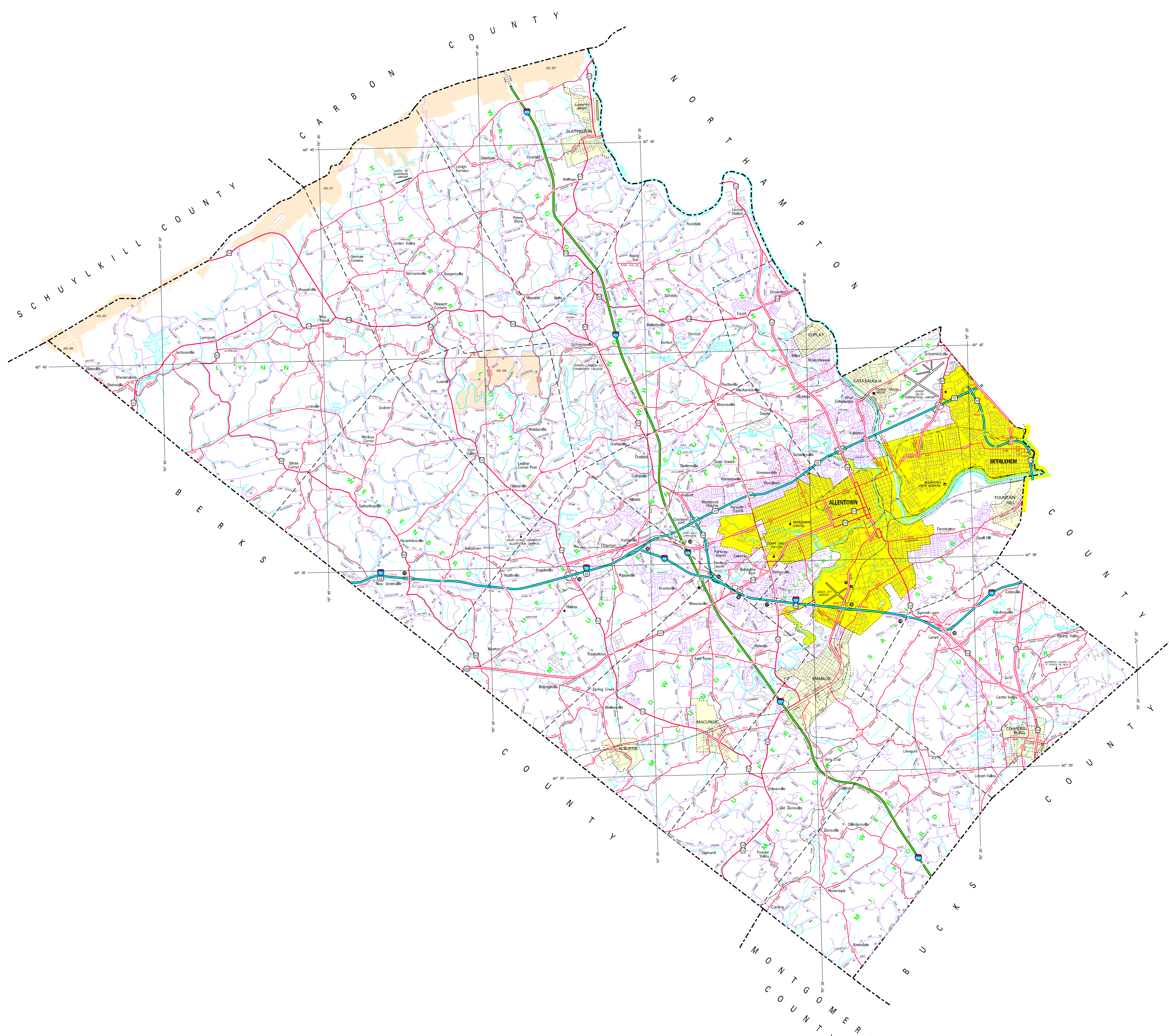
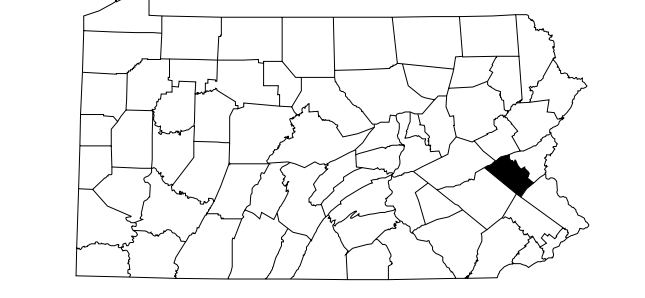
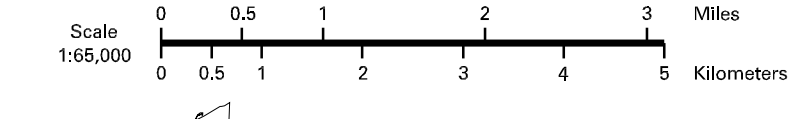


- LEGEND**
- EXPRESSWAY - ACCESS FULLY CONTROLLED
  - EXPRESSWAY - ACCESS PARTIALLY CONTROLLED
  - TRUNK ROAD
  - TRUNK ROAD - STATE ROAD AND HIGHWAY
  - STATE MAINTAINED ROAD
  - TOWNSHIP ROAD
  - TOWNSHIP ROAD (FRONTIER CORPORACTIONS)
  - OTHER ROAD
  - INTERSTATE HIGHWAY NUMBER
  - INTERSTATE TRAFFIC ROUTE
  - UNITED STATES TRAFFIC ROUTE
  - PENNSYLVANIA TRAFFIC ROUTE
  - RAILROAD BY SERVICE
  - RAILROAD (ABANDONED) (BLACK RETRAINED)
  - STATE LINE
  - COUNTY LINE
  - TOWNSHIP LINE
  - INCORPORATED CITY
  - INCORPORATED BOROUGH
  - STATE CAPITAL
  - COUNTY SEAT
  - OTHER COALMINES
  - COLLEGE OR UNIVERSITY
  - STATE POLICE FACILITY
  - STATE ADMINISTERED HISTORIC PROPERTY
  - FEDERAL STATE HISTORIC ZONE
  - PENNS DOT FACILITY
  - PORT OF WHEELING
  - RAILROAD TRACK
  - WELCOME CENTER AND CONCEPT FACILITY
  - STATE FISH HATCHERY
  - STATE FOREST NATIONAL AREA
  - STATE FOREST PLANTING AREA
  - FEDERAL RECREATION SITE
  - STATE PARK LAND (RESERVATIONS)
  - STATE GAME LAND AND NUMBER
  - STATE AND FEDERAL FOREST LAND
  - FEDERAL PARK (RECREATION) LAND
  - FEDERAL RESERVATION



1996  
**GENERAL HIGHWAY MAP**  
**LEHIGH COUNTY**  
**PENNSYLVANIA**

ISSUED BY THE  
 PENNSYLVANIA DEPARTMENT OF TRANSPORTATION  
 CARTOGRAPHIC INFORMATION DIVISION  
 IN COOPERATION WITH THE  
 U.S. DEPARTMENT OF TRANSPORTATION  
 FEDERAL HIGHWAY ADMINISTRATION



COPIES OF THIS MAP ARE AVAILABLE AT NOMINAL COST  
 CONTACT:  
 PENNSYLVANIA DEPARTMENT OF TRANSPORTATION  
 DISTRIBUTION SERVICES UNIT  
 P.O. BOX 3028  
 HARRISBURG, PENNSYLVANIA 17105-3028  
 TELEPHONE: (717) 785-6248

USERS NOTING ERRORS OR OMISSIONS ON THIS MAP  
 ARE URGED TO REPORT THEM TO:  
 PENNSYLVANIA DEPARTMENT OF TRANSPORTATION  
 CARTOGRAPHIC INFORMATION DIVISION  
 302 WALNUT STREET - 8TH FLOOR  
 HARRISBURG, PENNSYLVANIA 17101-1985

POPULATION OF COUNTY 1990 Census.....28130  
 AREA OF COUNTY (SQ. MI.).....348  
 (SQ. KM.).....901  
 POLYCONIC PROJECTION

COPYRIGHT - COMMONWEALTH OF PENNSYLVANIA  
 DEPARTMENT OF GENERAL SERVICES