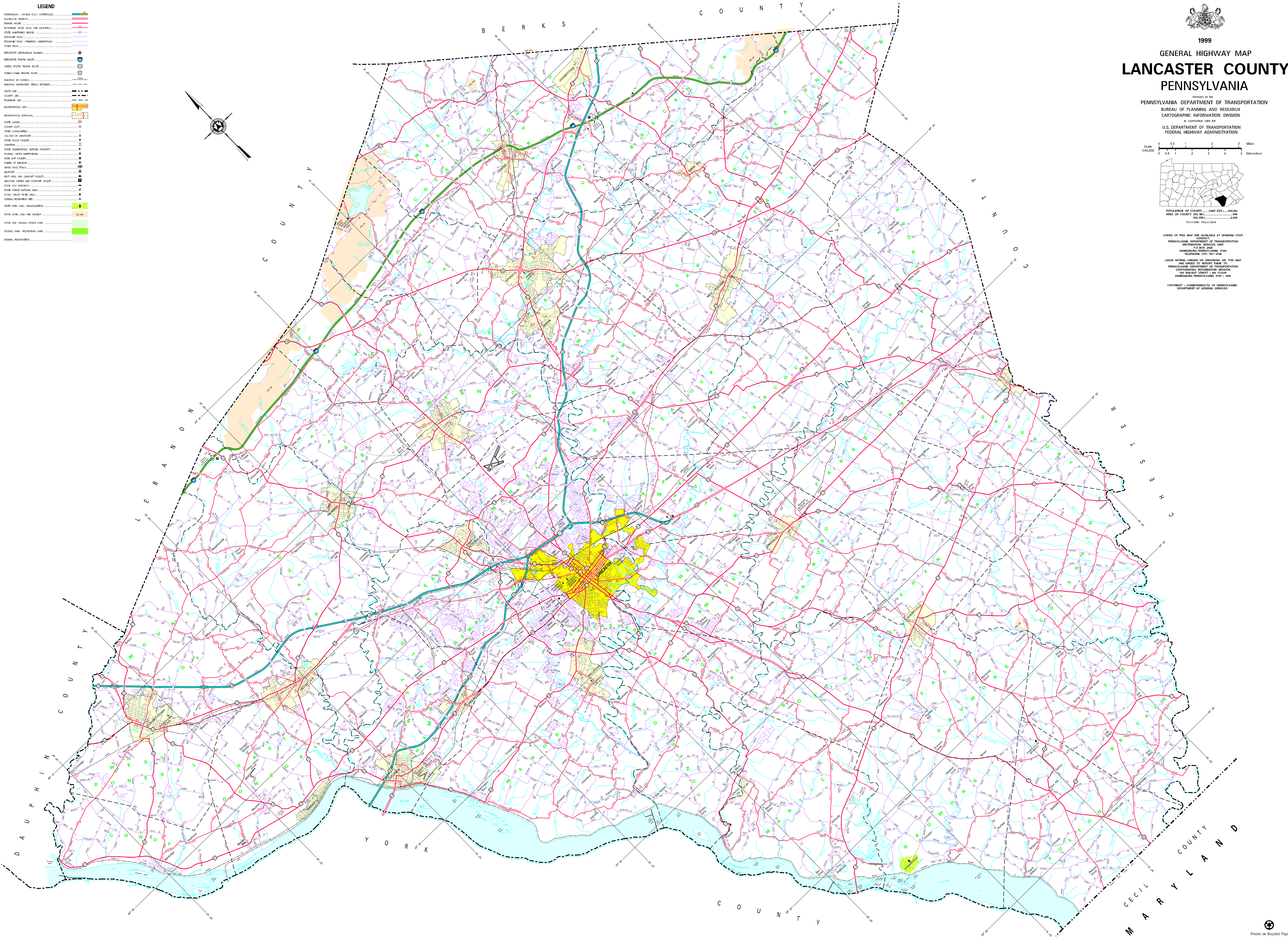
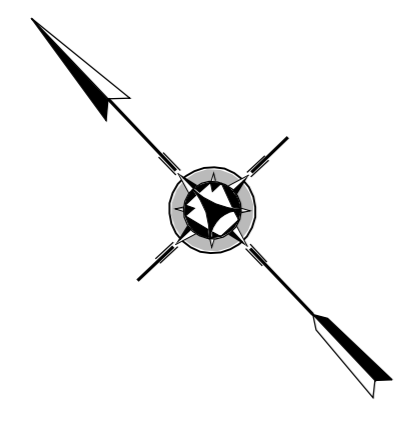
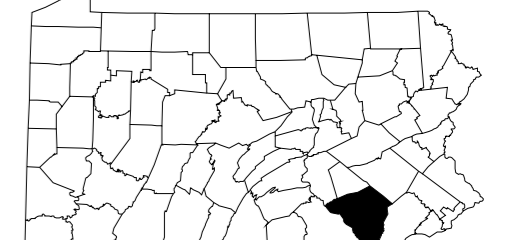
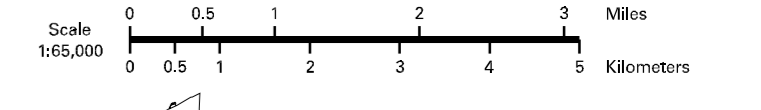


- LEGEND**
- EXPRESSWAY - ACCESS FULLY CONTROLLED
 - TRUNK HIGHWAY
 - STATE HIGHWAY
 - ROADWAY STATE ROAD AND CENTERLINE
 - STATE MAINTAINED BRIDGE
 - TOWNSHIP ROAD
 - TOWNSHIP ROAD (PRIVATE UNIMPROVED)
 - OTHER ROAD
 - POSTMILE INTERCHANGE NUMBER
 - INTERSTATE TRAFFIC ROUTE
 - LOCAL TRAFFIC ROUTE
 - RAILROAD ON CORNER
 - RAILROAD ABANDONED (ONCE RETIRED)
 - STATE LINE
 - COUNTY LINE
 - TOWNSHIP LINE
 - INCORPORATED CITY
 - INCORPORATED BOROUGH
 - STATE CAPITAL
 - COUNTY SEAT
 - OTHER GOVERNMENT
 - COLLEGE OR UNIVERSITY
 - STATE POLICE FACILITY
 - CORNER
 - STATE ADMINISTERED RESERVE PROPERTY
 - FEDERAL STATE INSTITUTION
 - FORE SOLE TRUST
 - PORT OF HARBOR
 - RECREATION TRAIL
 - HELIPORT
 - REST AREA AND CORNER FACILITY
 - WELCOME CENTER AND CORNER FACILITY
 - STATE FIS WILDLIFE
 - STATE FOREST RECREATION AREA
 - STATE FOREST RECREATION AREA
 - FEDERAL RECREATION SITE
 - STATE PARK LAND / HEADQUARTERS
 - STATE PARK LAND AND NUMBER
 - STATE AND FEDERAL FOREST LAND
 - FEDERAL FOREST LAND
 - FEDERAL RESERVATION



1999
GENERAL HIGHWAY MAP
LANCASTER COUNTY
PENNSYLVANIA

PREPARED BY THE
PENNSYLVANIA DEPARTMENT OF TRANSPORTATION
BUREAU OF PLANNING AND RESEARCH
CARTOGRAPHIC INFORMATION DIVISION
 IN COOPERATION WITH THE
U.S. DEPARTMENT OF TRANSPORTATION
FEDERAL HIGHWAY ADMINISTRATION



POPULATION OF COUNTY 1990 EST. 454,000
 AREA OF COUNTY (SQ. MI.) 495
 (SQ. KM.) 1,280
 POLYCONIC PROJECTION

COPIES OF THIS MAP ARE AVAILABLE AT NOMINAL COST
 CONTACT:
 PENNSYLVANIA DEPARTMENT OF TRANSPORTATION
 DISTRIBUTION SERVICES UNIT
 P.O. BOX 302
 HARRISBURG, PENNSYLVANIA 17105
 TELEPHONE (717) 763-5266

USERS NOTING ERRORS OR OMISSIONS ON THIS MAP
 ARE URGED TO REPORT THEM TO:
 PENNSYLVANIA DEPARTMENT OF TRANSPORTATION
 CARTOGRAPHIC INFORMATION DIVISION
 505 WALNUT STREET - 9TH FLOOR
 HARRISBURG, PENNSYLVANIA 17101-1860

COPYRIGHT - COMMONWEALTH OF PENNSYLVANIA
 DEPARTMENT OF GENERAL SERVICES