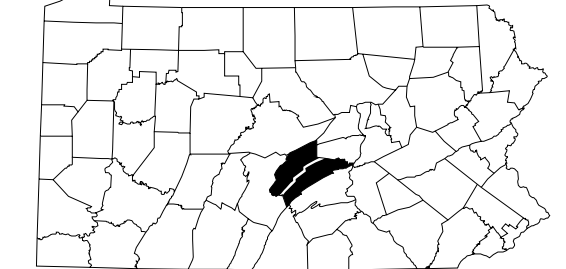




1996
GENERAL HIGHWAY MAP
JUNIATA COUNTY
AND
MIFFLIN COUNTY
PENNSYLVANIA

PREPARED BY THE
PENNSYLVANIA DEPARTMENT OF TRANSPORTATION
CARTOGRAPHIC INFORMATION DIVISION
IN COOPERATION WITH THE
U.S. DEPARTMENT OF TRANSPORTATION
FEDERAL HIGHWAY ADMINISTRATION

Scale
0 0.5 1 2 3 4 5 Miles
0 0.5 1 2 3 4 5 Kilometers

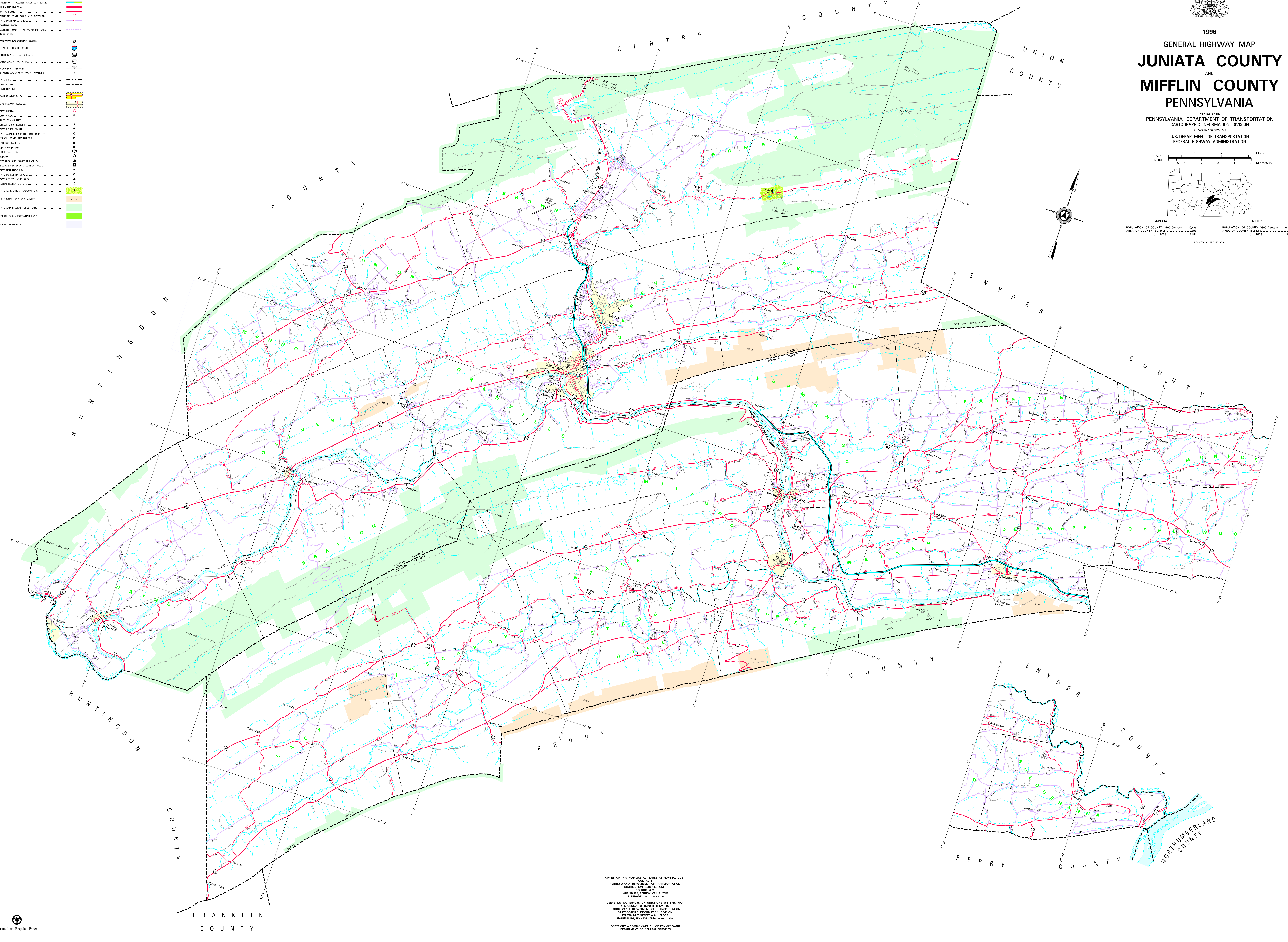


JUNIATA
POPULATION OF COUNTY (1990 Census).....29,822
AREA OF COUNTY (SQ. MI.).....1,288
(SQ. KM.).....3,341

MIFFLIN
POPULATION OF COUNTY (1990 Census).....46,397
AREA OF COUNTY (SQ. MI.).....1,017
(SQ. KM.).....2,645

POLYCONIC PROJECTION

- LEGEND**
- BYPASSWAY - ACCESS FULLY CONTROLLED
 - MULTILANE HIGHWAY
 - TRUNK ROUTE
 - REMAINING STATE ROAD AND HIGHWAY
 - STATE MAINTAINED BRIDGE
 - TOWNSHIP ROAD
 - TOWNSHIP ROAD (PRIVATE UNIMPROVED)
 - OTHER ROAD
 - INDUSTRIAL ATTACHMENT NUMBER
 - INDUSTRIAL TRUCK ROUTE
 - UNITED STATES TRUCK ROUTE
 - PENNSYLVANIA TRUCK ROUTE
 - RAILROAD IN SERVICE
 - RAILROAD ABANDONED (TRAIL RETURNED)
 - STATE LINE
 - COUNTY LINE
 - TOWNSHIP LINE
 - INCORPORATED CITY
 - INCORPORATED BOROUGH
 - STATE CAPITAL
 - COUNTY SEAT
 - OTHER COMMUNITIES
 - COLLEGE OF UNIVERSITY
 - STATE POLICE HEADQUARTERS
 - STATE ADMINISTERED HISTORIC PROPERTY
 - FEDERAL STATE BOTANICAL GARDEN
 - FOREST CITY FACILITY
 - PORT OF INTEREST
 - HOUSE AND TRAIL
 - HIGHWAY
 - REST AREA AND CONCRETE FACILITY
 - WELCOME CENTER AND CONCRETE FACILITY
 - STATE FISH HATCHERY
 - STATE FOREST NATURAL LAND
 - STATE FOREST PLANT AREA
 - FEDERAL RECREATION SITE
 - STATE PARK LAND - HEADQUARTERS
 - STATE GAME LAND AND NUMBER
 - STATE AND FEDERAL FOREST LAND
 - FEDERAL PARK RECREATION LAND
 - FEDERAL RESERVATION



COPIES OF THIS MAP ARE AVAILABLE AT NOMINAL COST
CONTACT:
PENNSYLVANIA DEPARTMENT OF TRANSPORTATION
DISTRIBUTION SERVICES UNIT
P.O. BOX 281
HARRISBURG, PENNSYLVANIA 17105
TELEPHONE (717) 787-6246

USERS NOTING ERRORS OR OMISSIONS ON THIS MAP
ARE URGED TO REPORT THEM TO:
PENNSYLVANIA DEPARTMENT OF TRANSPORTATION
CARTOGRAPHIC INFORMATION DIVISION
400 WALKER STREET - 4TH FLOOR
HARRISBURG, PENNSYLVANIA 17101-1001

COPYRIGHT - COMMONWEALTH OF PENNSYLVANIA
DEPARTMENT OF GENERAL SERVICES