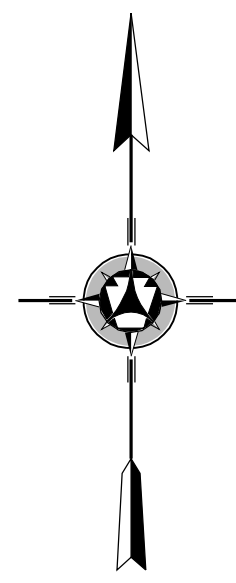
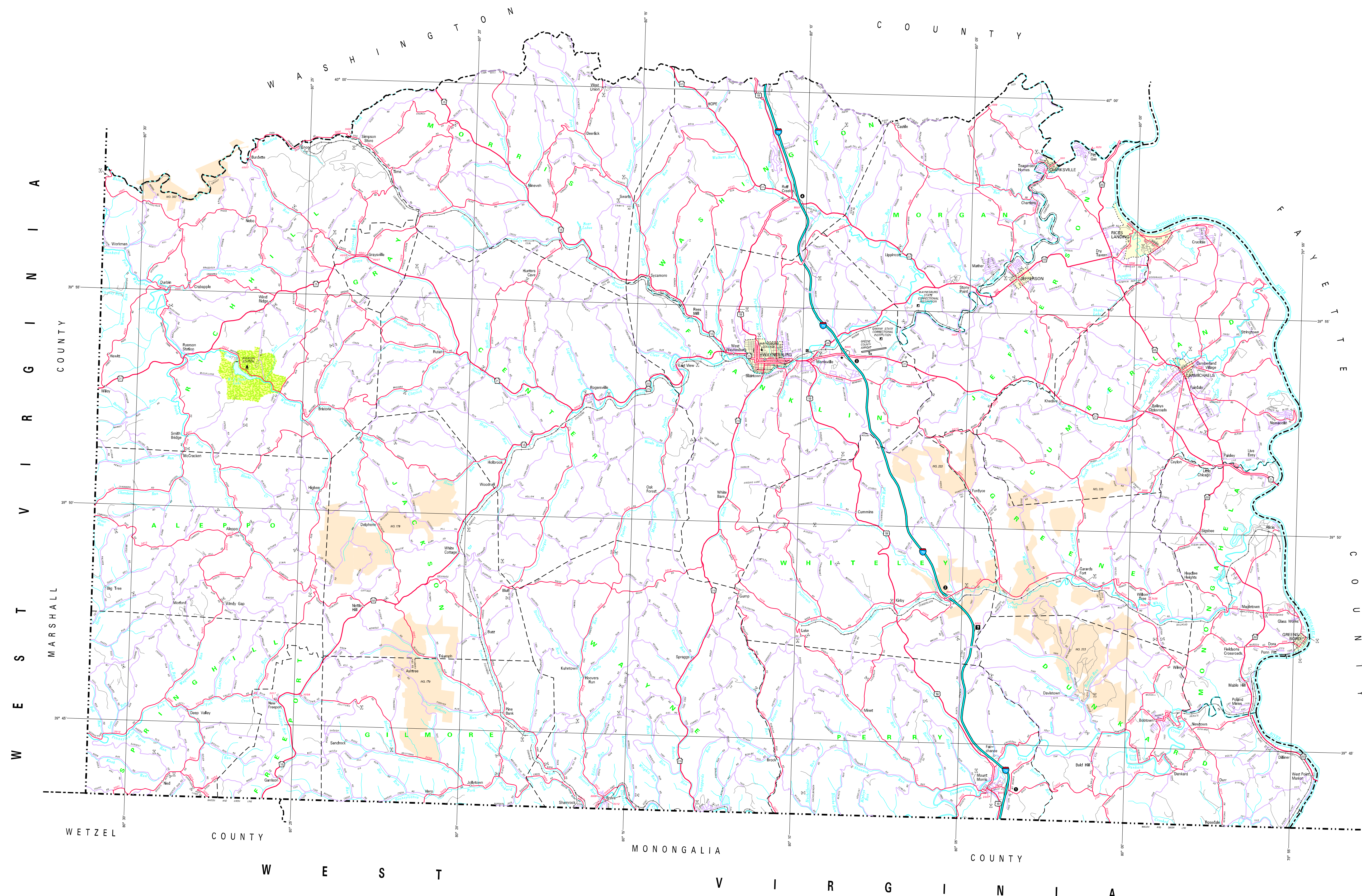
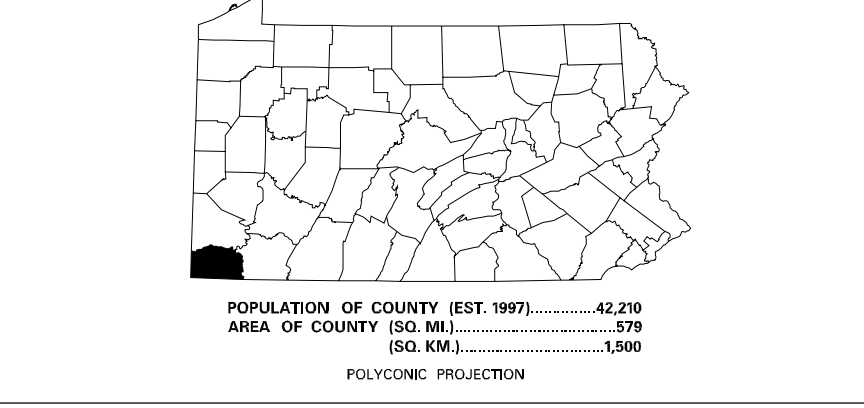


- LEGEND**
- EXPRESSWAY - ACCESS FULLY CONTROLLED
 - MULTILANE HIGHWAY
 - TRUNK ROAD
 - REMAINING STATE ROAD AND ROADWAY
 - STATE MAINTAINED BRIDGE
 - TOWNSHIP ROAD
 - TOWNSHIP ROAD (PRIVATE UNIMPAVED)
 - OTHER ROAD
 - PROPOSED INTERSTATE NUMBER
 - PROPOSED TRUNK ROUTE
 - UNITED STATES TRUNK ROUTE
 - PENNSYLVANIA TRUNK ROUTE
 - RAILROAD OR SERVICE
 - RAILROAD ABANDONED TRACK (RETRACED)
 - STATE LINE
 - COUNTY LINE
 - TOWNSHIP LINE
 - INCORPORATED CITY
 - INCORPORATED BOROUGH
 - STATE CAPITAL
 - COUNTY SEAT
 - OTHER CEMETERIES
 - COLLEGE OR UNIVERSITY
 - STATE HOUSE BUILDING
 - COURTHOUSE
 - STATE ADMINISTERED HISTORIC PROPERTY
 - FEDERAL STATE HISTORIC
 - FEDERAL STATE HISTORIC
 - FEDERAL STATE HISTORIC
 - PORT OF IMPRISON
 - MOBILE HOME TRAIL
 - REST AREA AND COMFORT FACILITY
 - WELCOME CENTER AND COMFORT FACILITY
 - STATE FISH HATCHERY
 - STATE FOREST NATIONAL AREA
 - STATE FOREST PLANT AREA
 - FEDERAL RECREATION AREA
 - STATE PARK LAND - HEADQUARTERS
 - STATE GAME LAND AND NUMBER
 - STATE AND FEDERAL FOREST LAND
 - FEDERAL PARK - RECREATION LAND
 - FEDERAL STATE RESERVATION



1999
GENERAL HIGHWAY MAP
GREENE COUNTY
PENNSYLVANIA

PREPARED BY THE
 PENNSYLVANIA DEPARTMENT OF TRANSPORTATION
 BUREAU OF PLANNING and RESEARCH
 CARTOGRAPHIC INFORMATION DIVISION
 IN COOPERATION WITH THE
 U.S. DEPARTMENT OF TRANSPORTATION
 FEDERAL HIGHWAY ADMINISTRATION



COPIES OF THIS MAP ARE AVAILABLE AT NOMINAL COST
 CONTACT
 PENNSYLVANIA DEPARTMENT OF TRANSPORTATION
 DISTRIBUTION SERVICES UNIT
 1205 G. ST.
 HARRISBURG, PENNSYLVANIA 17105
 TELEPHONE: 717-797-6146
 USERS NOTING ERRORS OR OMISSIONS ON THIS MAP
 ARE URGED TO REPORT THEM TO
 PENNSYLVANIA DEPARTMENT OF TRANSPORTATION
 CARTOGRAPHIC INFORMATION DIVISION
 605 WALKER STREET - 6TH FLOOR
 HARRISBURG, PENNSYLVANIA 17101-1900
 COPYRIGHT - COMMONWEALTH OF PENNSYLVANIA
 DEPARTMENT OF GENERAL SERVICES