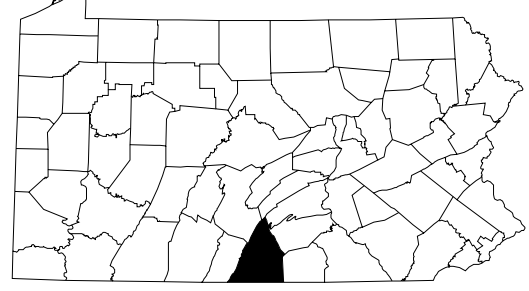


1997

GENERAL HIGHWAY MAP FRANKLIN COUNTY PENNSYLVANIA

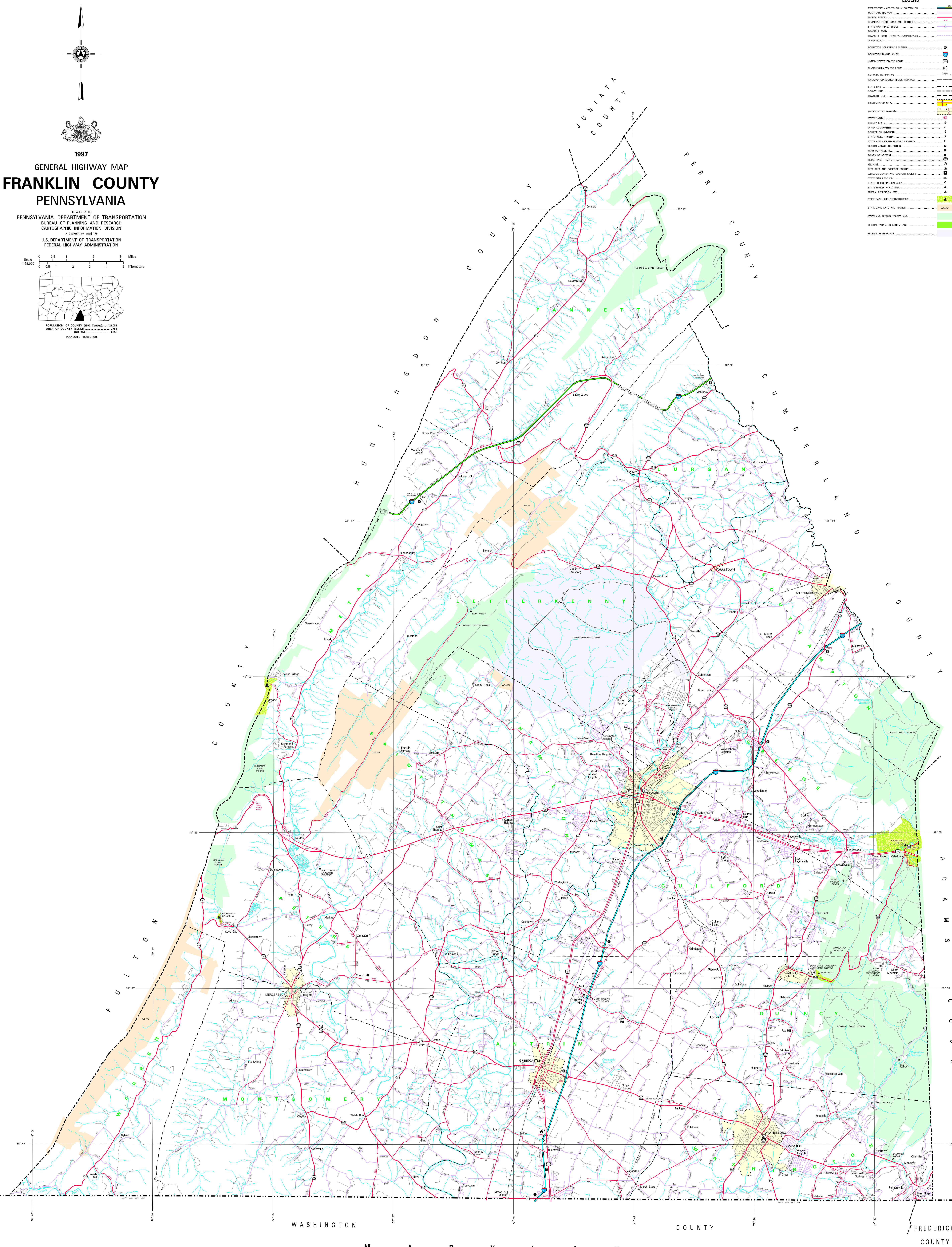
PREPARED BY THE
PENNSYLVANIA DEPARTMENT OF TRANSPORTATION
BUREAU OF PLANNING AND RESEARCH
CARTOGRAPHIC INFORMATION DIVISION
IN COOPERATION WITH THE
U.S. DEPARTMENT OF TRANSPORTATION
FEDERAL HIGHWAY ADMINISTRATION

Scale
0 0.5 1 2 3 Miles
0 0.5 1 2 3 Kilometers



POPULATION OF COUNTY 1990 Census 121,282
AREA OF COUNTY (SQ. MI.) 394
(SQ. KM.) 1,023
POLYCONIC PROJECTION

LEGEND	
	EXPRESSWAY - ACCESS FULLY CONTROLLED
	MULTILANE HIGHWAY
	THREE ROUTE
	MAINLINE STATE ROAD AND ROUTES
	STATE MAINTAINED BRIDGE
	TOWNSHIP ROAD
	TOWNSHIP ROAD (UNIMPROVED)
	OTHER ROAD
	INTERSTATE BRIDGE NUMBER
	STATE TRAFFIC ROUTE
	UNIMPROVED TRAFFIC ROUTE
	RAILROAD BY SERVICE
	RAILROAD ABANDONED (TRACK RETAINED)
	STATE LINE
	COUNTY LINE
	TOWNSHIP LINE
	INCORPORATED CITY
	INCORPORATED BOROUGH
	STATE CAPITAL
	COUNTY SEAT
	OTHER CONVENTION
	COLLEGE OR UNIVERSITY
	STATE POLICE FACILITY
	FEDERAL STATE INSTITUTION
	NEW CITY FACILITY
	POINTS OF INTEREST
	RAILROAD TRACK
	RAILROAD
	REST AREA AND CONCRETE FACILITY
	YELLOW CORNER AND CONCRETE FACILITY
	STATE TRAIL FACILITY
	STATE FOREST METEOROLOGICAL AREA
	STATE FOREST ROAD AREA
	FEDERAL RECREATION SITE
	STATE PARK LAND (RECREATING)
	STATE GARDEN LAND AND NUMBER
	STATE AND FEDERAL FOREST LAND
	FEDERAL PARK, RECREATION LAND
	FEDERAL RESERVATION



COPIES OF THIS MAP ARE AVAILABLE AT NOMINAL COST
CONTACT:
PENNSYLVANIA DEPARTMENT OF TRANSPORTATION
DISTRIBUTION SERVICES UNIT
P.O. BOX 3024
HARRISBURG, PENNSYLVANIA 17105
TELEPHONE: (717) 797-6248
USERS NOTICED ERRORS OR OMISSIONS ON THIS MAP
ARE URGED TO REPORT THEM TO:
PENNSYLVANIA DEPARTMENT OF TRANSPORTATION
CARTOGRAPHIC INFORMATION DIVISION
908 WALNUT STREET - 4TH FLOOR
HARRISBURG, PENNSYLVANIA 17101-1600
COPYRIGHT - COMMONWEALTH OF PENNSYLVANIA
DEPARTMENT OF GENERAL SERVICES